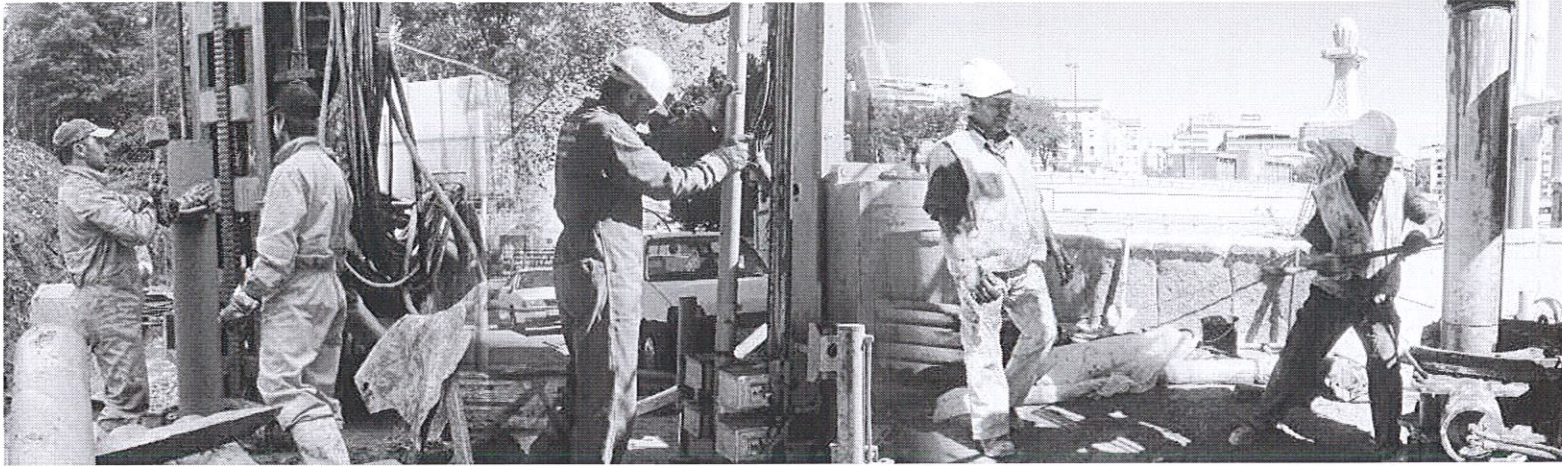


Atlas Copco Portable air compressors

Highest productivity under all circumstances



XRVS 700 CD6
-XRVS 1000 CD6

Atlas Copco is the leading manufacturer of portable compressed air machines in the world. Used in a wide variety of industries, Atlas Copco has developed a set of machines that successfully walk the line between size, output and capacity.

Drilling is a high intensity business where every second counts, and there is no room for error or failure. The 362 psi (25 Bar) machines from Atlas Copco are the most durable and robust machines in their class, and as such they lead the industry. These machines are flexible and multi-purpose: from demanding large rotary blast holes and deep-hole drilling to large diameter pipeline cleaning. Adapted to working in difficult conditions and extreme temperatures, they are the natural choice for deep-hole drillers and the Oil & Gas industry.



Atlas Copco



Technical Specifications

Atlas Copco compressors deliver high levels of pressure in the most efficient way – with the right capacity, at the right speed, and the best fuel economy. They are by far, the most cost effective air compressors on the market. Not only is fuel consumption optimized with the exclusive FuelXpert™ system, but components last longer thanks to Oiltronix™ technology.

Safety is paramount for all Atlas Copco equipment. It's safe for the operator and those around the machines when they are in use (reduced noise levels, air release valves, emergency stops); safety is vital while they are in transit (towing, loading and lifting); and safety is priority when it comes to the environment (best fuel consumption, long lasting parts).

Above all though, Atlas Copco compressors are built for reliability and simple easy maintenance, and many years of loyal and trouble free service.

Features

- Safety features as pressure displays, emergency stop and spill free frame
- FuelXpert™ for optimized fuel consumption
- Oiltronix™ for longer lasting components
- Ready to drill package with a full range of options for all operating conditions.
- Fast speed tandem or wagon trailer
- Truck or skid mounted version
- Best for use in all weather conditions -13°F (-25°C) to 122°F (+50°C)
- Cosmos™

Advantages

- Operator and environmental safe
- Lowest total cost of ownership
- Lowest fuel consumption in class
- Delivers full range of drilling and hole options
- Rugged frame built to last
- Best fuel efficiency for complete working shift

Danger: Compressed air should never be supplied as breathing air unless air is properly purified for breathing. Atlas Copco assumes no responsibility or liability related to the purchaser's/user's breathing air system.

The information contained herein is general in nature and is not intended for specific construction, installation or application purposes.

Model Compressor	XRVS 700 cd6	XRVS 1000 cd6
Normal effective working pressure	362 PSI 25 Bar	362 PSI 25 Bar
Actual free air delivery*	695 cfm 328 l/sec 19.7 m³/min	974 cfm 460 l/sec 27.6 m³/min
Oil capacity compressor system	20 gal. 75 L	20 gal. 75 L
Content fuel tank (standard)	142 gal. 538 L	210 gal. 796 L
Content fuel tank(tandem)	142 gal. 538 L	142 gal. 538 L
Air outlet valve	1x2 1/2"	1x2 1/2"
Engine Caterpillar		
Type	C9 ACERT T3	C13 ACERT T3
Output	300 BHP 224 kW	426 BHP 318 kW
Engine speed (nominal)	1800 rpm	1600 rpm
Engine speed (unloaded)	1300 rpm	1200 rpm
Unit dimensions (overall)		
Length (wagon, towbar raised)	193 in. 4.9 m	193 in. 4.9 m
Length (tandem)	222 in. 5.65 m	222 in. 5.65 m
Length (skid, support mounted)	159 in. 4.05 m	159 in. 4.05 m
Width	85 in. 2.15 m	85 in. 2.15 m
Height (wagon, tandem)	98 in. 2.50 m	98 in. 2.50 m
Height (support)	89 in. 2.25 m	89 in. 2.25 m
Height (skid)	95 in. 2.41 m	95 in. 2.41 m
Weight (without fuel)		
Wagon	12,721 lbs. 5,770 kg	12,721 lbs. 5,770 kg
Tandem	12,838 lbs. 5,823 kg	13,555 lbs. 6,148 kg
Support mounted (option big fueltank)	11,288/11,574 lbs. 5,120/5,250 kg	12,390/12,677 lbs. 5,620/5,750 kg
Skid (option big fueltank)	11,861/12,147 lbs. 5,380/5,510 kg	12,963/13,250 lbs. 5,880/6,010 kg
Sound Level		
Sound power level (LWA)**	100 dB(A)	100 dB(A)
Sound pressure level (LPA) at 23 ft. [7m] acc. to ISO 2151	72 dB(A)	72 dB(A)

*according to ISO1217 ed.3 1996 annex D

**complies with 2000/14/EC, 84/533 EEC and 85/406/EEC limits



Atlas Copco

U.S. Sales/Distribution Center

Atlas Copco Compressors LLC
1800 Overview Drive
Rock Hill, SC 29730
Tel. 803-817-7000
Tel. 800-232-3234
Fax. 803-817-7450
www.atlascopco.us

Atlas Copco XRVS 1000 CD6

1000 CFM, 250-365 PSI Rotary Screw Compressor

Atlas Copco is the leading manufacturer of portable compressed air machines in the world. Used in a wide variety of industries, Atlas Copco has developed a set of machines that successfully walk the line between size, output and capacity.

The demand for drilling equipment continues to rise. This series is particularly adapted for deep water well drilling under harsh conditions. The frame is rugged and built to last, and the machine is designed for continuous duty. It is perfect for building sites: both in helping lay the foundations of buildings, and ground consolidation. Also for pipeline cleaning, it is the ideal machine, thanks to its ability to vary between lower and higher-pressure outputs.

Atlas Copco is the leading manufacturer of portable compressed air machines in the world. Used in a wide variety of industries, Atlas Copco has developed a set of machines that successfully walk the line between size, output and capacity. Drilling is a high intensity business where every second counts, and there is no room for error or failure. The 25 Bar (365 psi) machines from Atlas Copco are the most durable and robust machines in their class, and as such they lead the industry. These machines are flexible and multi-purpose: from demanding large rotary blast holes, deep-hole drilling to large diameter pipeline cleaning. Adapted to working in difficult conditions and extreme temperatures, they are the natural choice for deep-hole drillers and the Oil & Gas industry.

- Tier-III/Stage-III compliant Caterpillar engines meets the toughest environmental standards
- Guaranteed free air delivery in accordance with ISO 1217, ed. 3, 1996, Annex D measured at the outlet valves, you get the amount of air you paid for
- Leak-free chassis and central fluid drain system protects the environment
- Zincor-treated canopies with powder coat paint finish for improved resistance to corrosion and higher resell value
- Quick and easy access to all service points allow reduced maintenance time and operating costs
- Operation from -25° (-13°F) to 50°C (122°F) Troublefree operation in harsh conditions