



CFM COMPANY
AIR CONDITIONING / HEATING / VENTILATING EQUIPMENT
1440 South Lipan Street • Denver, CO 80223-3411
Phone: (303) 761-2291 • Fax: (303) 761-0325

5 NOVEMBER 2018

AMERICAN ELM
4132 WEST 38TH AVENUE
DENVER, CO 80212

ENGINEER — GIVEN & ASSOCIATES
CONTRACTOR — MARXAIRE

ACCUREX
KITCHEN EXHAUST SYSTEM

GREENHECK
EXHAUST FAN
MANUAL BALANCING DAMPERS

REVERSOMATIC
LEAK PROOF WALL BOX

PRICE INDUSTRIES
GRILLES, REGISTERS AND DIFFUSERS

Submitted by: Kelly Larkin
CFM Company
1440 S Lipan St
Denver, CO 80223

XXEW

Type 1, X-Tractor Filter Single Wall - Exhaust Only Wall Canopy

Model	Hood Length (in.)	Width (in.)	Bottom Width (in.)	Height (in.)		Exhaust Volume (CFM)	Exhaust SP (in. w.g.)	Double Island
				Front	Back			
XXEW	155	60	60	24	24	3000	0.619	No

Selected Options & Accessories:

Option or Accessory	Description
Mounting Height	78 in. off Finished Floor.
Integral Air Space	Factory Mounted on Back - 3" wide
Non-Integral Air Space	Factory Mounted on Right - 1" wide Zero Clearance
Ceiling Enclosures	8 in. High on Left Front Right
Filter Type	Stainless Steel X-Tractor Filters
Backsplash Panel	122 in High 168 in Long 0 in Wide
Right Sidesplash	122 in High 72 in Long 0 in Wide
Left Mini End Skirt	30 in High 30 in Top Width 4 in Bottom Width
Right Mini End Skirt	30 in High 30 in Top Width 4 in Bottom Width

Material: 430 SS Where Exposed
UL Listing: UL 710 w/out Exhaust Fire Damper

Features:
Performance Enhancing Lip (PEL)
Standing Seam Construction for Superior Strength
Stainless Steel Finish for Higher Corrosion Resistance

Hood End Conditions:
Back Wall - Limited Combustible
Right Full Wall - Combustible

Section Data:

Section Num.	Length (in.)	Volume (CFM)	SP (in. wg)	Filter Qty 16" W 20" W	Filter Ht. (in.)	Cooking Load	Light Qty	Light Type	Foot Candles	Drain Location	Weight (lbs)
1	155	3000	0.619	1 7	20	Heavy	4	Incandescent / CFL	43.8	Left	516.667

Exhaust Collar Data:

Section Num.	Collar Num.	Collar Size (LxW) in. or Diameter (in.)	Pos. Off Left (in.)	Pos Off Back (in.)	Velocity (fpm)	Mounting Option
1	1	16 x 16	77.5	8	1688	Factory Mounted Exhaust Collar(s)

External Supply Plenum Data:

Supply: 2400 CFM

MUA: 2400 CFM

AC: 0 CFM

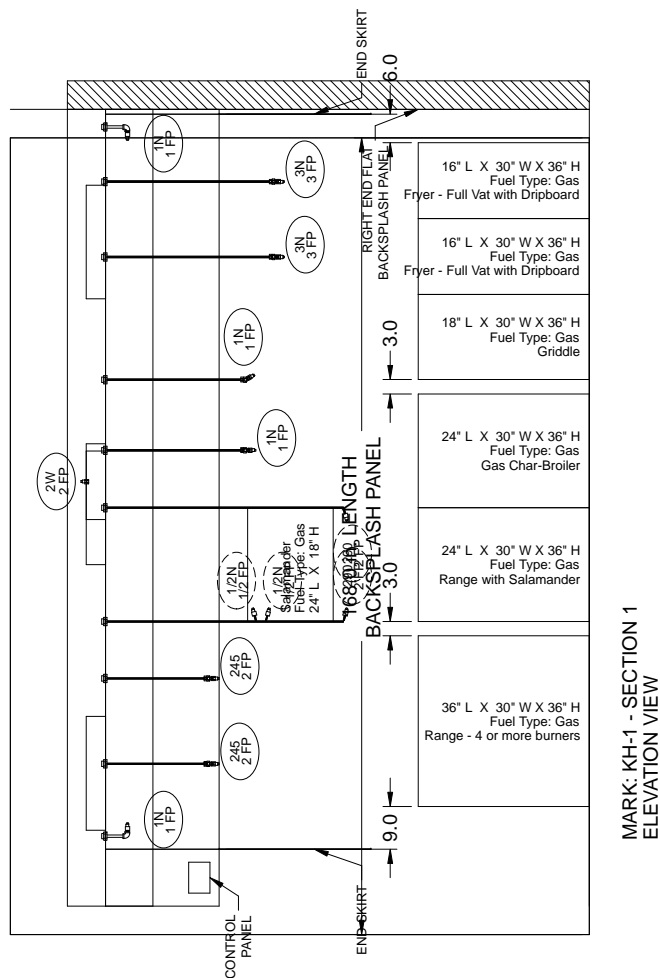
Section Num.	Plenum Num.	Side	Type	Length (in.)	Width (in.)	Height (in.)	Volume (CFM)	SP (in. wg)	Insulated	MBD	LED Lights
1	1	Front	Air Curtain Supply (ASP)	168	14	10	2400	0.13	No	Yes	No

External Supply Collar Data:

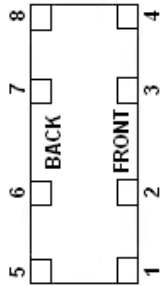
Section Num.	Plenum Num.	Side	Collar Num.	Collar Size (LxW) in. or Diameter (in.)	Pos. Off Left (in.)	Pos. Off Front (in.)	Velocity (fpm)	Mounting Option
1	1	Front	1	24 x 10	28	7	480	Factory Mounted Supply Collar(s)
1	1	Front	2	24 x 10	84	7	480	Factory Mounted Supply Collar(s)
1	1	Front	3	24 x 10	140	7	480	Factory Mounted Supply Collar(s)

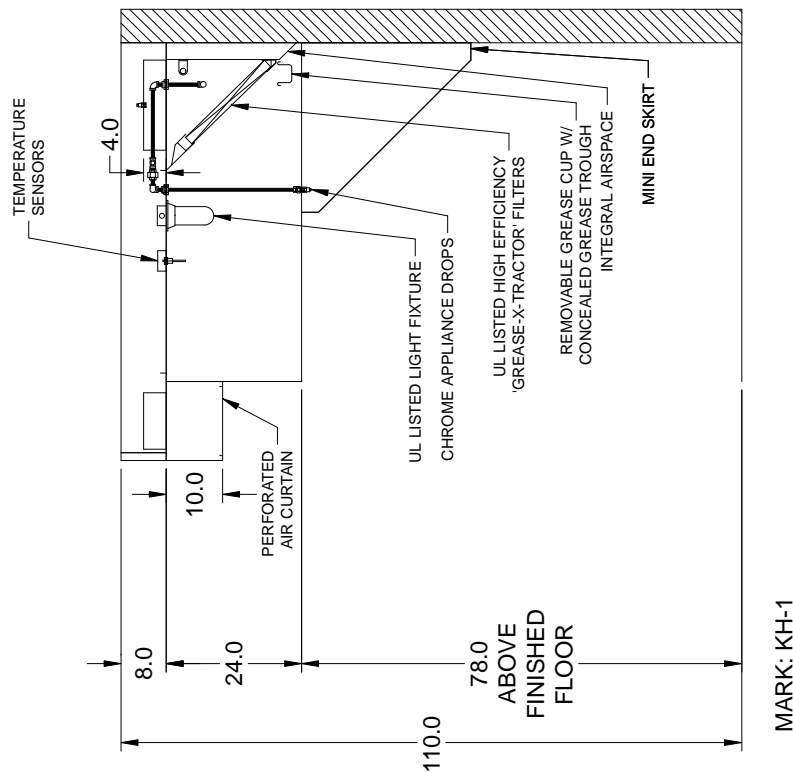
Utility Cabinet Data:

Descripton	Length (in.)	Width (in.)	Height (in.)	Weight (lbs)
Left Utility Cabinet	60	12	24	190.7



NOTE: All dimensions are in units of in.

Hanger Bracket Locations			
Sec #	Brkt #	Distance Off Left (in)	Distance Off Front (in)
1	1	3.50	2.50
1	2	51.62	2.50
1	3	103.23	2.50
1	4	151.50	2.50
1	5	3.50	56.00
1	6	51.62	56.00
1	7	103.23	56.00
1	8	151.50	56.00
Bracket Mounting Position for an 8 Bracket Hood			
			



NOTE: All dimensions are in units of in.



Ansul R-102 Wet Chemical Fire Suppression System

Hood Options and Accessories

Mounting Option	Mounted in Utility Cabinet (includes pre-piped hood with detection and factory coordinated install)
System Size	6 Gallon
Flow Points	Maximum of 22 and 21 are utilized.
Installation Location	The fire system tank connection tee will be on the Left.
Gas Valve	Mechanical Shutoff Valve, 2", (Ansul)
	There are 8 appliance drops on this system.
Metal Blow Off Caps	High temperature metal caps to protect and keep the nozzles clean.
Alarm Initiating Switch	Connects to the buildings main fire alarm panel.
Permit Fees Included	Permit and Puff Test Only

NOTE: Must maintain 8 inch clearance between top of hood and pipe connections for installation (includes piping and workspace clearance).

Protected Hood Sections:

-	KH-1 Section 1
---	----------------

Standard Construction Features:

- Preparing of the kitchen hood
- Fuel shut-off device
- One double-pole, double-throw microswitch for electric appliances
- All detectors, links, release mechanism, tank, and fire suppressant agent.
- One manual pull station for remote mounting (This must be in the path of egress, at a maximum distance of 20 ft (6.1 meters) from the release mechanism).
- An ANSUL® tank and release mechanism housed in a cabinet.
- Final field hook-up to be performed by a non-union certified ANSUL® distributor.
- Factory coordination of final system hook-up between jobsite contact and the assigned ANSUL® distributor.

Notes:

- The installation of the mechanical or electrical type gas valve is the responsibility of the plumbing contractor.
- A double-pole, double-throw microswitch is provided for use with electric appliances. This device also can be used with alarm systems, fan shut down, and electric solenoid gas valves. The wiring of this device is the responsibility of the electrical contractor.
- Permit and Puff test fees.
- Two trips out to the jobsite is included (system installation and test).
- This program applies only to the continental United States. For an ANSUL® hook-up in Alaska, Hawaii, Canada or any International destination, please consult Manufacturer for details and pricing.

Manufacturer HOOD MTD. FIRE CABINET HOOK-UP to consist of:

- Hook-up of detection lines, hook-up of supply lines, mount & hook-up remote manual pull, hook-up mechanical gas valve (If Applicable), charge and tag system.

ANSUL REMOTE MTD. FIRE CABINET HOOK-UP to consist of:

- Hang automan and additional tanks if multiple system, hook-up of detection lines, hook-up of supply lines, mount & hook-up remote manual pull, hookup mechanical gas valve (If Applicable), charge & tag system.

The basic fire suppression system does not include the following:

- Full dump test or system testing other than what is specified in the restaurant system installation manual, or special requirements to satisfy a state or local code.
- Special classes or additional labor for access to security sensitive areas.
- More than one trip to the jobsite or special transportation or overnight lodging requirement in remote areas.
- A shut-off device (shunt-trip breaker) for electric cooking equipment.
- Installation of the gas shut-off valve.
- Special drawings required to satisfy a state or local code.
- Union Labor, Government Labor, or Prevailing wages required for the final field hook-up.
- Any and all electrical connection required to shut down fan(s), electric cooking equipment, activate an alarm system, etc.
- Any dismantling or reassembly required to gain access to the fire suppression piping located on the top of the hood.
- Plan examination fees
- Rough-in conduit for remote pull station or gas valve (for flush mounted pull station).
- Additional remote pull stations.
- Parts or labor required to correct piping due to cooking equipment changes or deviation from plans.
- Any charges for missing or additional parts other than those indicated on the attached Fire Suppression Detail.

Note:

- The customer is responsible for and will be invoiced separately for any additional work performed in accordance with the above items.
- The ANSUL® fire cabinet contains the release assembly that must be mounted within 60 inches (1.5 meters) of the canopy.