



Tigercat drive-to-tree feller bunchers lead the industry in productivity, reliability and durability, resulting in lowest cost per tonne harvesting solutions in pine plantations and natural stands. With four models and a full range of Tigercat saw and shear felling heads to choose from, a machine can be configured and optimized to match any drive-to-tree feller buncher application.

BENEFITS AND ADVANTAGES:

Proven reliability, durability and high uptime

- Legendary Tigercat centre section constructed with thick steel plate, large pins and tapered roller bearings

WideRange™ drive for increased performance*

- Tigercat's infinitely variable transmission increases travel speed for quicker bunching cycles and increased production

Quick saw recovery

- Optimized hydraulic system maximizes power to the saw for quicker cycle times and higher production per hour

High capacity cooling system

- Cross-flow cooling with hydraulic driven automatic variable speed fan with automatic reversing cycle
- 718E is standard equipped with a variable pitch engine driven suction fan to minimize overall machine length

Cooling system, engine and hydraulic components are located in three separate compartments*

One standard axle for all models with a wide variety of available tire options

Excellent service access and component layout for quicker maintenance routines

- Spacious engine enclosure
- Hydraulic pumps and filters are oriented to the rear and easily accessible through a large swing-out door

Comfortable, spacious, quiet operator's station

- Full suspension seat with ergonomic armrest mounted joysticks to control steering and boom functions
- Excellent visibility with clear sightlines to all four tires

Drive-to-tree feller bunchers spend a large part of the total duty cycle driving – to the next tree or to the bunch pile. WideRange™ allows the operator to cover this ground more quickly for improved productivity. As an added bonus, Tigercat's WideRange is more fuel efficient than a conventional two-speed transmission.

widerANGE™

*720G, 724G and 726E only

SPECIFICATIONS

718E

720G

724G

726E

DIMENSIONS with standard tires

WIDTH	2 540 mm (100 in)	3 000 mm (118 in)	3 000 mm (118 in)	3 000 mm (118 in)
LENGTH less felling head	5 410 mm (213 in)	5 790 mm (228 in)	5 790 mm (228 in)	5 995 mm (236 in)
WHEELBASE	2 745 mm (108 in)	2 920 mm (115 in)	2 920 mm (115 in)	2 970 mm (117 in)
HEIGHT	3 350 mm (132 in)	3 350 mm (132 in)	3 380 mm (133 in)	3 380 mm (133 in)
GROUND CLEARANCE				
with standard tires	510 mm (20 in)	510 mm (20 in)	535 mm (21 in)	535 mm (21 in)
with 30.5 x 32 tires	635 mm (25 in)	635 mm (25 in)	635 mm (25 in)	635 mm (25 in)
FRAME ARTICULATION	+/- 45°	+/- 45°	+/- 45°	+/- 45°
WEIGHT less felling head	11 070 kg (24,400 lb)	13 070 kg (28,820 lb)	13 070 kg (28,820 lb)	13 700 kg (30,200 lb)

POWER

ENGINE	Cummins QSB6.7 Tier III	Tigercat FPT N67 Tier 4f	Tigercat FPT N67 Tier 4f	Tigercat FPT C87 Tier 4i
	129 kW (173 hp) @ 2,200 rpm	151 kW (205 hp) @ 2,200 rpm	184 kW (247 hp) @ 2,200 rpm	245 kW (328 hp) @ 1,800 rpm
	Precleaner and 2-stage engine air cleaner	Precleaner and 2-stage engine air cleaner	Precleaner and 2-stage engine air cleaner	Precleaner and 2-stage engine air cleaner
COOLING	Side-by-side aluminum radiator, oil cooler and charge air cooler	Cross-flow; Side-by-side aluminum radiator, oil cooler and charge air cooler	Cross-flow; Side-by-side aluminum radiator, oil cooler and charge air cooler	Cross-flow; Side-by-side aluminum radiator, oil cooler and charge air cooler
FAN	Suction, Flexxaire® variable pitch with automatic reversing cycle	Hydraulically driven; Automatic variable speed with automatic reversing cycle	Hydraulically driven; Automatic variable speed with automatic reversing cycle	Hydraulically driven; Automatic variable speed with automatic reversing cycle
FUEL CAPACITY usable	314 L (83 US gal)	340 L (90 US gal)	303 L (80 US gal)	455 L (120 US gal)
DEF CAPACITY	N/A	N/A	43 L (11 US gal)	43 L (11 US gal)

POWER TRAIN

TRANSMISSION	2-speed mechanical shift	2-speed mechanical shift	2-speed mechanical shift	WideRange™ drive
	Variable speed hydrostatic	Variable speed hydrostatic	Variable speed hydrostatic	Variable speed hydrostatic
	Piston motor, infinitely variable	Piston motor, infinitely variable	Piston motor, infinitely variable	(2) Piston motors, infinitely variable
Optional	N/A	WideRange drive, infinitely variable	WideRange drive, infinitely variable	N/A
AXLES	Front fixed, 37R	Front fixed, 37R	Front fixed, 37R	Front fixed, 37R
	Rear oscillating +/- 15°, 37R	Rear oscillating +/- 15°, 37R	Rear oscillating +/- 15°, 37R	Rear oscillating +/- 15°, 37R
DIFFERENTIAL LOCKS	Independent front and rear	Independent front and rear	Independent front and rear	Independent front and rear

HYDRAULIC SYSTEM

PUMP, DRIVE	Piston	Piston	Piston	Piston
PUMP, BOOM	Gear	Gear	Gear	Gear
PUMP, STEERING	Gear	Gear	Gear	Gear
PUMP, SAW	Piston	Piston	Piston	Piston
PUMP, FAN	N/A	Gear	Gear	Gear
RESERVOIR	147 L (39 US gal)	160 L (42 US gal)	160 L (42 US gal)	178 L (47 US gal)
FILTRATION	(5) Spin-on, 7 micron full flow	(5) Spin-on, 7 micron full flow	(4) Spin-on, 7 micron full flow	(5) Spin-on, 7 micron full flow
CYLINDERS, BOOM	(4) 115 mm (4.5 in) bore	(4) 115 mm (4.5 in) bore	(4) 115 mm (4.5 in) bore	(4) 115 mm (4.5 in) bore
	lift and tilt	lift and tilt	lift and tilt	lift and tilt
CYLINDERS, STEER	(2) 75 mm (3 in) bore	(2) 75 mm (3 in) bore	(2) 75 mm (3 in) bore	(2) 75 mm (3 in) bore

BRAKES

DYNAMIC BRAKING	Hydrostatic	Hydrostatic	Hydrostatic	Hydrostatic
SECONDARY BRAKES	Enclosed, oil cooled	Enclosed, oil cooled	Enclosed, oil cooled	Enclosed, oil cooled
PARK BRAKE	Driveline mounted wet disc	Driveline mounted wet disc	Driveline mounted wet disc	Driveline mounted wet disc
	Spring applied, hydraulic release	Spring applied, hydraulic release	Spring applied, hydraulic release	Spring applied, hydraulic release

TIRES

STANDARD	23.1x26, 14	23.1x26, 14	28Lx26, 16	28Lx26, 16
OPTIONAL	24.5x32, 16; 28Lx26, 16	24.5x32, 16; 28Lx26, 16	30.5Lx32, 20/26; 67x34-25, 14	30.5Lx32, 20/26; 67x34-25, 14
	30.5Lx32, 20	30.5Lx32, 20/26; 67x34-25, 14	67x34-26, 14; 73x44-32, 16	67x34-26, 14; 73x44-32, 16
		67x34-26, 14 73x44-32, 16		

ELECTRICAL

BATTERY	(2) 12 v	(2) 12 v	(2) 12 v	(2) 12 v
ALTERNATOR	80 amp, 24 v	80 amp, 24 v	80 amp, 24 v	110 amp, 24 v
SYSTEM VOLTAGE	24 v	24 v	24 v	24 v

OPERATOR CONTROLS

CAB	Insulated, pressurized and isolation mounted; (2) doors with sliding tempered glass windows and hinged steel mesh screens			
	Removable steel and polycarbonate skylight; A/C, heater, defroster and pressurizer; Forward sloping polycarbonate windshield			
	AM/FM digital stereo with CD player; 12 v power point; 24 v lighter			
CONTROLS	Hydraulic pilot; joystick for boom and steering, (2) foot pedals for forward/reverse travel			
SEAT	Full suspension, fully adjustable with angled mounting; Armrest mounted joysticks			

SPECIFICATIONS

718E

720G

724G

726E

OTHER STANDARD EQUIPMENT

Pressurized water system
Back-up alarm; Low fuel light
Hydraulic oil hand fill pump
Fire extinguisher
Fire detection system
Air ride suspension seat
Drive speed limiter control
Easily cleaned radiator air intake screens

Pressurized water system
Back-up alarm; Low fuel light
Hydraulic oil hand fill pump
Fire extinguisher
Fire detection system
Air ride suspension seat
Drive speed limiter control

Pressurized water system
Back-up alarm; Fuel gauge
Hydraulic oil hand fill pump
Fire extinguisher
Fire detection system
Air ride suspension seat
Drive speed limiter control

Pressurized water system
Back-up alarm; Fuel gauge
Hydraulic oil electric fill pump
Fire extinguisher
Fire detection system
Air ride suspension seat
Drive speed limiter control

OPTIONAL EQUIPMENT

Halogen lighting package
HID lighting package
CB radio
Quick wheel steering

Halogen lighting package
HID lighting package
CB radio
Quick wheel steering

Halogen lighting package
HID lighting package
CB radio
Quick wheel steering

Halogen lighting package
HID lighting package
CB radio
Quick wheel steering

TIGERCAT RESERVES THE RIGHT TO AMEND THESE SPECIFICATIONS AT ANY TIME WITHOUT NOTICE



Tigercat FPT emission technology is simple and reliable, meeting Tier 4 emission standards without the complexities of a variable geometry turbocharger, EGR system, intake throttle body or diesel particulate filter. The key is the patented selective catalyst reduction (SCR) system. Tigercat FPT engines offer improved reliability, lower long-term maintenance costs and industry-leading fuel efficiency.

TIGERCATPOWER.
TIGERCATSUPPORT.

TIGERCAT 718E FELLER BUNCHER



TIGERCAT 720G FELLER BUNCHER



TIGERCAT 724G FELLER BUNCHER



TIGERCAT 726E FELLER BUNCHER





Easy access to both sides of the engine and all daily service points.



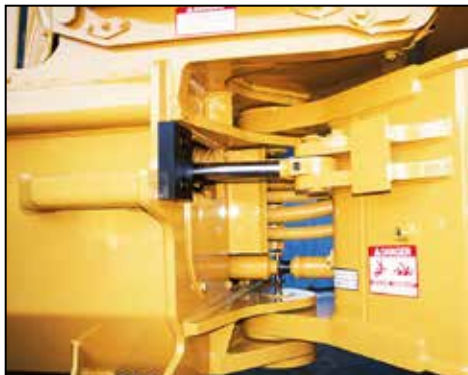
Working height access to hydraulic pumps and filters through the rear swing-out door.



High capacity cross-flow cooling with automatic variable speed fan and reversing cycle. (720G, 724G, 726E)



Excellent visibility to the tires through rear quarter windows.



Strong centre section with large pins and tapered roller bearings.



Range of high capacity Tigercat bunching saws and shears to maximize plantation harvesting system productivity.



The 726E is extremely powerful and stable for high performance in tough terrain and large timber.



The 720G and 724G are highly versatile for contractors requiring a productive machine for thinning and final felling.



Compact and agile, the 718E matched to a high capacity bunching head is the ultimate plantation thinning machine.

Tigercat's range of felling attachments, including the 'big wood' 5702 felling saw and the high capacity bunching saws and shears allow you to customize the feller buncher to your specific requirements. Choosing the right Tigercat felling head can potentially reduce cost and boost the productivity of the entire harvesting system. Visit www.tigercat.com for more information or contact a Tigercat sales specialist at your nearest Tigercat dealer.

© 2001 - 2015 Tigercat International Inc. All Rights Reserved. TIGERCAT, WIDERANGE, TURNAROUND, ER, EHS, and TEC, their respective logos, TOUGH RELIABLE PRODUCTIVE, TIGERCAT TV, "Tigercat Orange" and BETWEEN THE BRANCHES, as well as corporate and product identity, are trademarks of Tigercat International Inc., and may not be used without permission. TIGERCAT, TURNAROUND, and ER, and their respective logos are registered trademarks of Tigercat International Inc.

54 Morton Ave. East
Brantford, Ontario
Canada, N3R 7J7
Mail: Box 637 N3T 5P9

(7085) 8 1214•Tig

E-mail: comments@tigercat.com
Internet: www.tigercat.com
Tel: (519) 753-2000
Fax: (519) 753-8272

Tigercat®