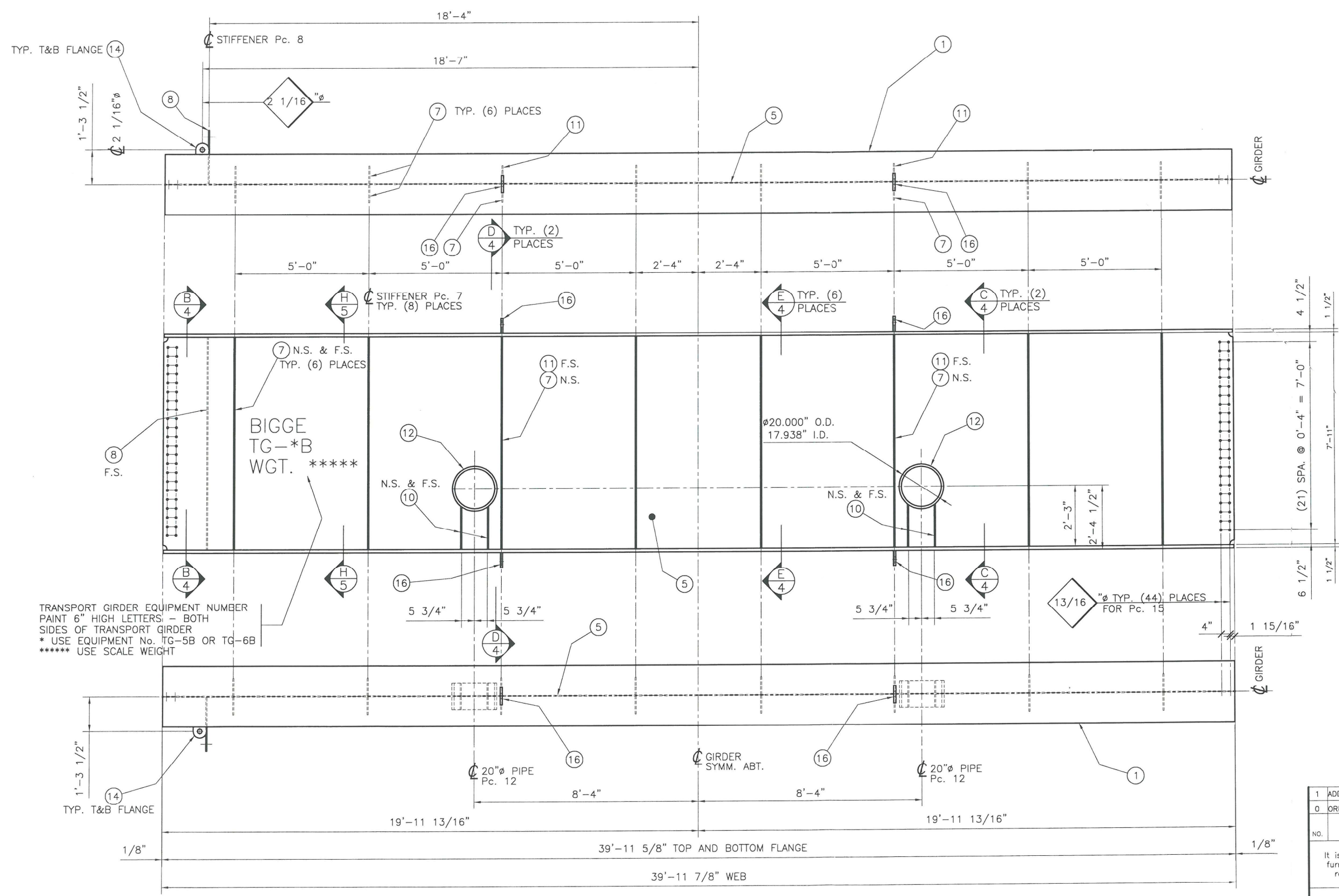


THIS DOCUMENT IS PROVIDED "AS IS, WHERE IS" AND NO REPRESENTATIONS OR WARRANTIES ARE MADE, EXPRESSED OR IMPLIED. RELIANCE ON THE DOCUMENT IS AT THE SOLE RISK OF THE USER. TO THE EXTENT NOT PROHIBITED BY LAW, UNDER NO CIRCUMSTANCES SHALL BIGGE BE LIABLE WITH RESPECT TO THIS DOCUMENT FOR SPECIAL, INDIRECT, INCIDENTAL, OR CONSEQUENTIAL DAMAGES, INCLUDING WITHOUT LIMITATION, DAMAGES RESULTING FROM ANY INACCURACIES OR FROM LOSS OF PROFITS, BUSINESS OR GOODWILL, ON ANY THEORY OF LIABILITY, WHETHER ARISING UNDER TORT (INCLUDING NEGLIGENCE), CONTRACT OR OTHERWISE, WHETHER OR NOT BIGGE HAS BEEN ADVISED OR IS AWARE OF THE POSSIBILITY OF SUCH DAMAGES. IF, NOTWITHSTANDING ANY OTHER PROVISIONS OF THIS AGREEMENT, BIGGE IS FOUND TO BE LIABLE TO USER FOR ANY DAMAGE OR LOSS THAT ARISES OUT OF OR IS IN ANY WAY CONNECTED TO THIS DOCUMENT, BIGGE'S ENTIRE LIABILITY FOR DIRECT DAMAGES UNDER THIS AGREEMENT SHALL BE LIMITED TO FIFTY DOLLARS (\$50.00).

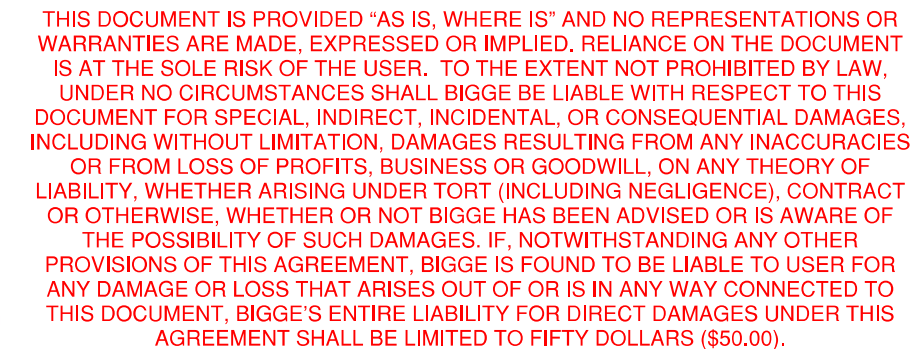


**TG-5B – TRANSPORT GIRDER (CENTER)**  
(ONE) REQUIRED AS SHOWN  
APPROXIMATE WEIGHT = 20,100 Lbs.

**TG-6B – TRANSPORT GIRDER (CENTER)**  
(ONE) REQUIRED OPPOSITE HAND  
APPROXIMATE WEIGHT = 20,100 Lbs.

- NOTES:**
- FOR GENERAL NOTES SEE DWG. GN1
  - PLANNED INSPECTIONS:  
WELDS : 100% VISUAL, M.T. PER GENERAL NOTES.  
100% U.T. 1" FLANGE PL TO 1 1/4" FLANGE PL  
100% U.T. ALL SHOP SPLICES IN FLANGES.
  - SEE SHEET 10 OF 10 FOR MATERIAL LIST.


1	ADD Pc. 16	10/24/02		DM/10/24/02		RB			
0	ORIGINAL ISSUE	10/18/02		DM/10/21/02		CF			
NO.	REVISIONS	DATE	BY	DATE	BY	DATE	BY		
		DRAWN		CHECKED		APPROVED			
This drawing contains information proprietary to Bigge Crane and Rigging Co. It is submitted in confidence and is to be used solely for the purpose for which it is furnished and returned upon request. This drawing and such information is not to be reproduced, transmitted, disclosed or used in whole or in part without the written authorization of Bigge Crane and Rigging Co.									
<div><div><b>BIGGE</b></div><div>Established 1916</div><div>CRANE and RIGGING CO.</div></div>									
<u>GENERAL ARRANGEMENT – TRUCKING GIRDERS</u> <u>TG-5B AND TG-6B – CENTER SECTIONS</u> <u>MAIN HAULING GIRDER</u> <u>26 DOLLY TRAILER</u>									
SCALE 1/2" = 1'-0"		ENGR. No.		DWG. No.		SHEET		REV.	
JOB NO. 23090		02E26		TG-5/6		2 of 10		1	



APPROXIMATE WEIGHT = 23,000 Lbs.

APPROXIMATE WEIGHT = 23,000 Lbs.

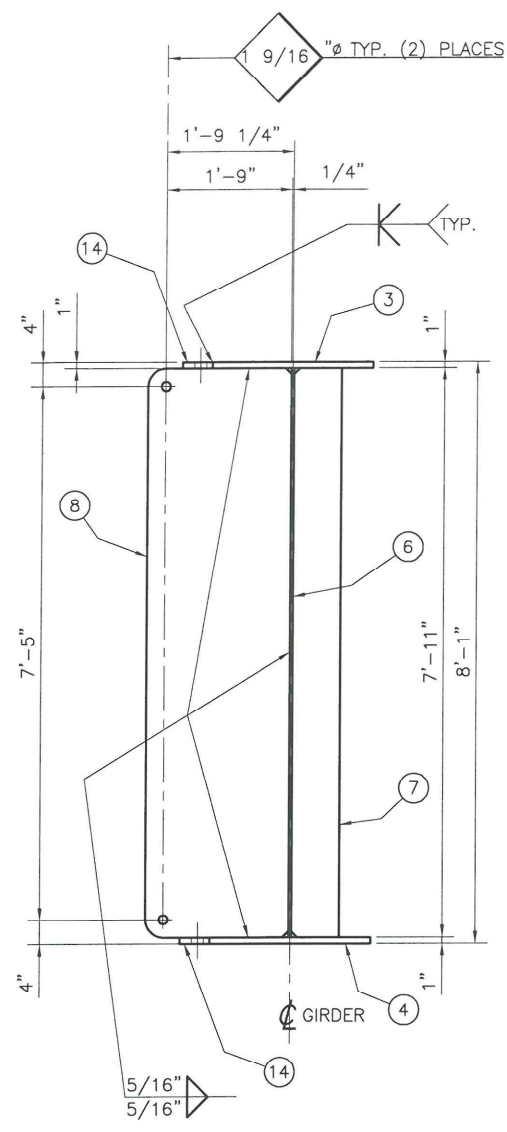
NOTES:

- |     |  |             |             |          |    |
|-----|--|-------------|-------------|----------|----|
| 1   | 1" WELD WAS 1/2" MOVE Pc 14 ON BOT. FLG 10/23/02 | DM 10/23/02 | RB          |          |    |
| 0   | ORIGINAL ISSUE                                   | 10/18/02    | DM 10/21/02 | CF       |    |
|     |  | DATE        | BY          | DATE     | BY |
| NO. | REVISIONS  | DRAWN       | CHECKED     | APPROVED |    |
- This drawing contains information proprietary to Bigge Crane and Rigging Co. It is submitted in confidence and is to be used solely for the purpose for which it is furnished and returned upon request. This drawing and such information is not to be reproduced, transmitted, disclosed or used in whole or in part without the written authorization of Bigge Crane and Rigging Co.
- 

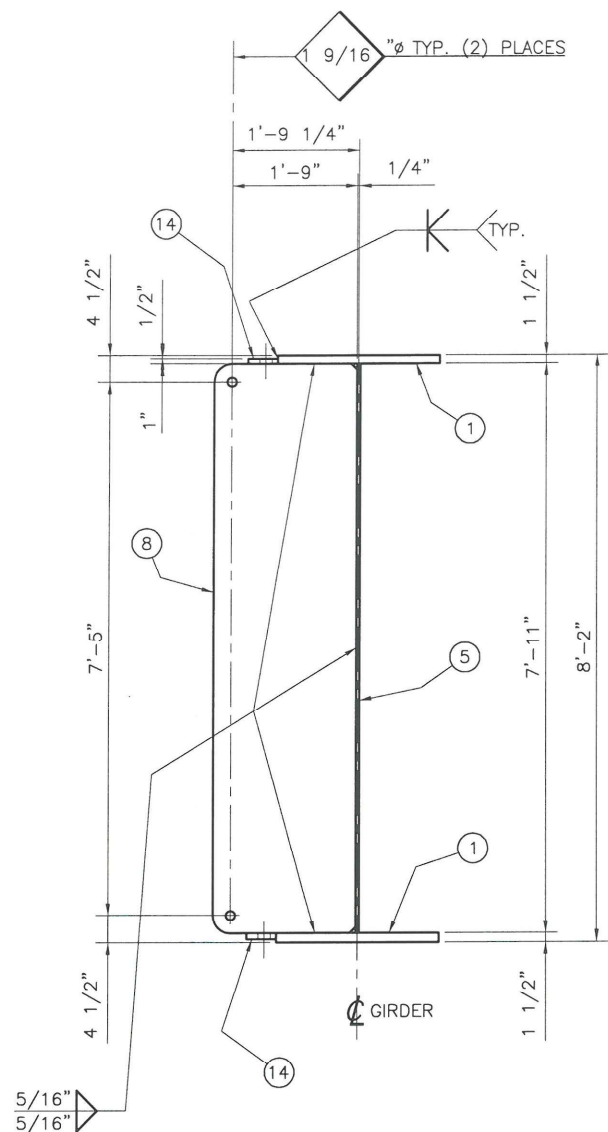
*Established 1916*

**CRANE and RIGGING CO.**
- GENERAL ARRANGEMENT — TRUCKING GIRDERS  
TG-5C AND TG-6C — END SECTIONS  
MAIN HAULING GIRDER  
26 DOLLY TRAILER
- |         |              |           |          |        |         |
|---------|--------------|-----------|----------|--------|---------|
| SCALE   | 1/2" = 1'-0" | ENGR. No. | DWG. No. | SHEET  | REV.    |
| JOB NO. | 23090        | 02E26     |          | TG-5/6 | 3 of 10 |
|         |              |           |          |        | 2       |

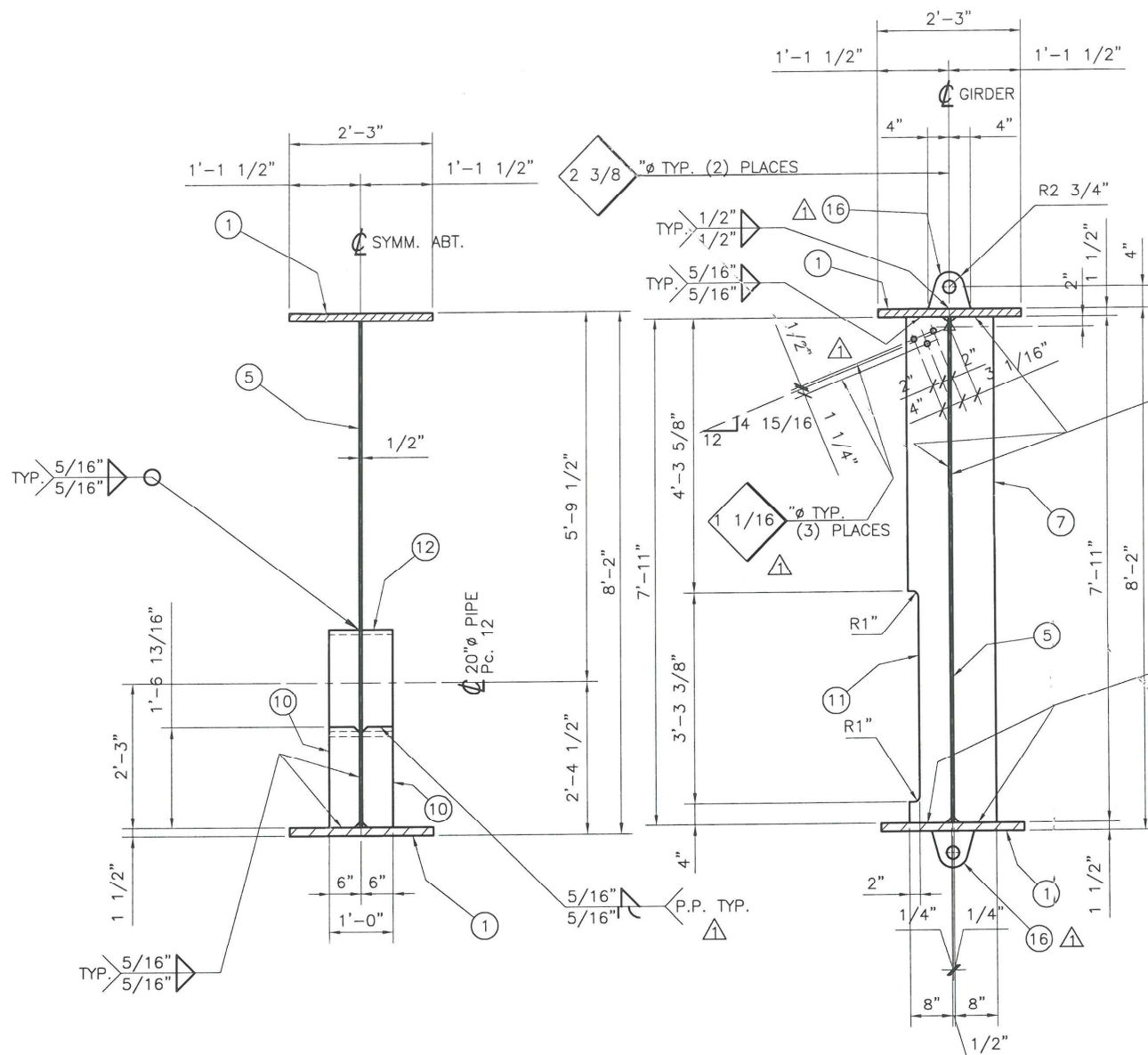




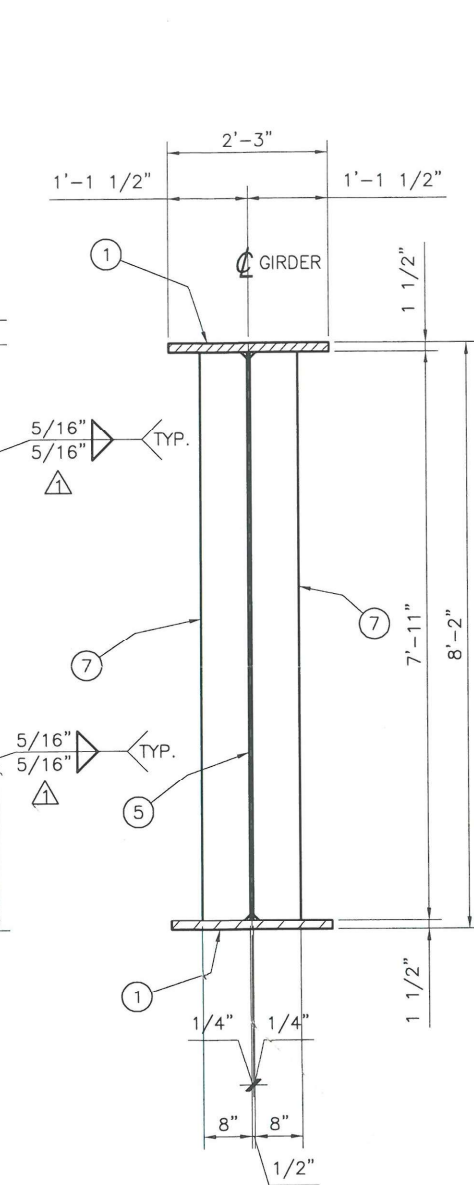
SECTION A  
4



SECTION B  
4



SECTION C  
4



SECTION D  
4

SECTION E  
4

THIS DOCUMENT IS PROVIDED "AS IS, WHERE IS" AND NO REPRESENTATIONS OR WARRANTIES ARE MADE, EXPRESSED OR IMPLIED. RELIANCE ON THE DOCUMENT IS AT THE SOLE RISK OF THE USER. TO THE EXTENT NOT PROHIBITED BY LAW, UNDER NO CIRCUMSTANCES SHALL BIGGE BE LIABLE WITH RESPECT TO THIS DOCUMENT FOR SPECIAL, INDIRECT, INCIDENTAL, OR CONSEQUENTIAL DAMAGES, INCLUDING WITHOUT LIMITATION, DAMAGES RESULTING FROM ANY INACCURACIES OR FROM LOSS OF PROFITS, BUSINESS OR GOODWILL, ON ANY THEORY OF LIABILITY, WHETHER ARISING UNDER TORT (INCLUDING NEGLIGENCE), CONTRACT OR OTHERWISE, WHETHER OR NOT BIGGE HAS BEEN ADVISED OR IS AWARE OF THE POSSIBILITY OF SUCH DAMAGES. IF, NOTWITHSTANDING ANY OTHER PROVISIONS OF THIS AGREEMENT, BIGGE IS FOUND TO BE LIABLE TO USER FOR ANY DAMAGE OR LOSS THAT ARISES OUT OF OR IS IN ANY WAY CONNECTED TO THIS DOCUMENT, BIGGE'S ENTIRE LIABILITY FOR DIRECT DAMAGES UNDER THIS AGREEMENT SHALL BE LIMITED TO FIFTY DOLLARS (\$50.00).

#### NOTES:

- FOR GENERAL NOTES SEE DWG. GN1
- PLANNED INSPECTIONS:  
WELDS : 100% VISUAL, M.T. PER GENERAL NOTES.  
100% U.T. 1" FLANGE PL TO 1 1/4" FLANGE PL  
100% U.T. ALL SHOP SPLICES IN FLANGES.
- SEE SHEET 10 OF 10 FOR MATERIAL LIST.

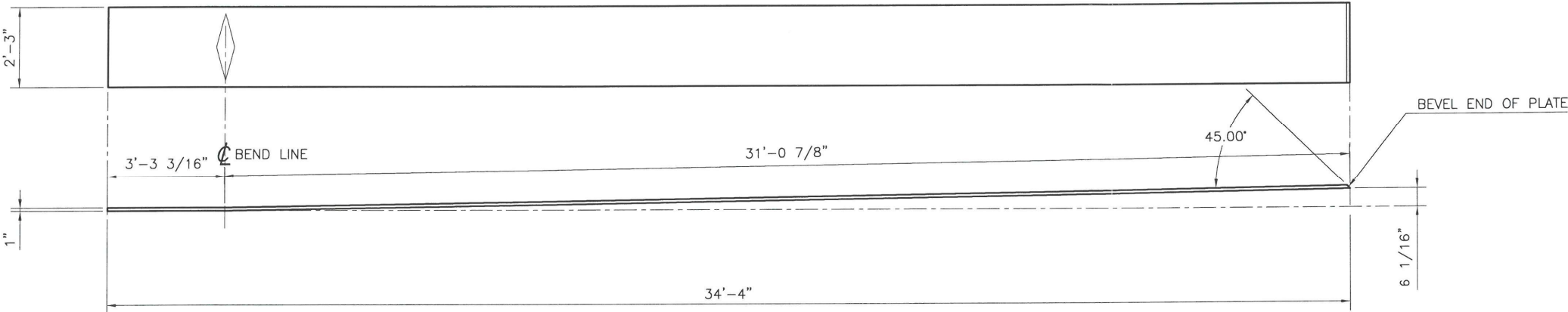
1	ADD P.P. .5/16" WELD,Pc. 16 &HOLES Pc.11	10/23/02	DM	10/23/02	CF		
0	ORIGINAL ISSUE	10/18/02	DM	10/21/02	CF		
NO.	REVISIONS	DATE	BY	DATE	BY	DATE	BY
		DRAWN		CHECKED		APPROVED	
This drawing contains information proprietary to Bigge Crane and Rigging Co. It is submitted in confidence and is to be used solely for the purpose for which it is furnished and returned upon request. This drawing and such information is not to be reproduced, transmitted, disclosed or used in whole or in part without the written authorization of Bigge Crane and Rigging Co.							
<div><div><b><i>BIGGE</i></b></div><div><i>Established 1916</i></div><div><b><i>CRANE and RIGGING CO.</i></b></div></div>							
<div><div><u>TG-5/6 TRUCKING GIRDERS</u></div><div><u>SECTIONS</u></div><div><u>MAIN HAULING GIRDER</u></div><div><u>26 DOLLY TRAILER</u></div></div>							
SCALE	3/4" = 1'-0"	ENGR. No.	DWG. No.		SHEET	REV	
JOB NO.	23090	02E26	TG-5/6		4 of 10	1	



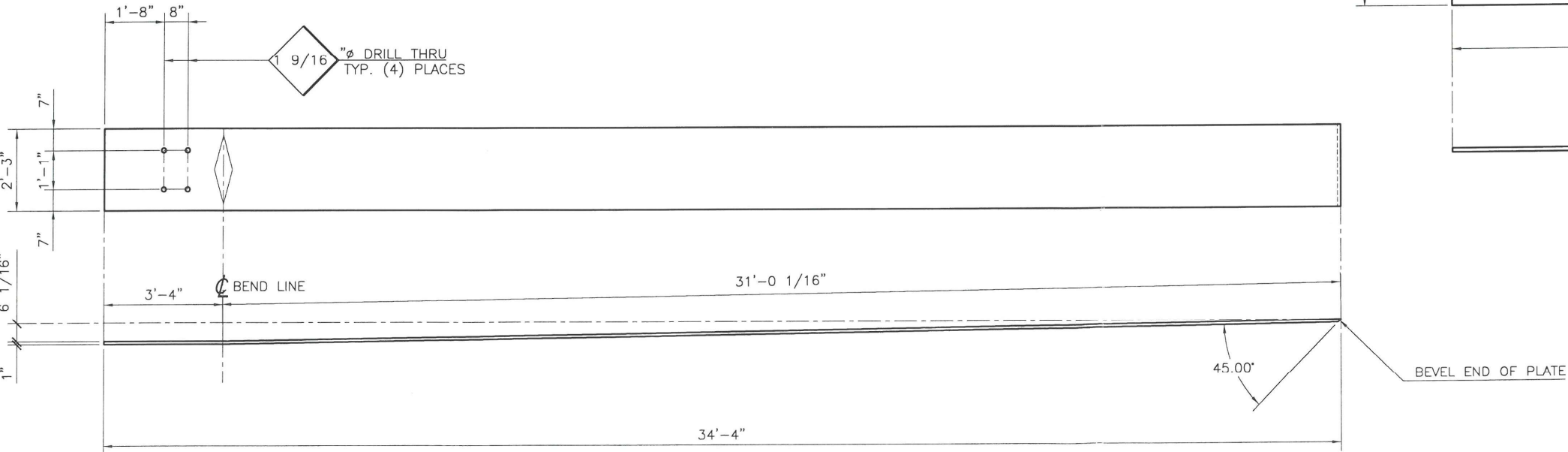


THIS DOCUMENT IS PROVIDED "AS IS, WHERE IS" AND NO REPRESENTATIONS OR WARRANTIES ARE MADE, EXPRESSED OR IMPLIED. RELIANCE ON THE DOCUMENT IS AT THE SOLE RISK OF THE USER. TO THE EXTENT NOT PROHIBITED BY LAW, UNDER NO CIRCUMSTANCES SHALL BIGGE BE LIABLE WITH RESPECT TO THIS DOCUMENT FOR SPECIAL, INDIRECT, INCIDENTAL, OR CONSEQUENTIAL DAMAGES, INCLUDING WITHOUT LIMITATION, DAMAGES RESULTING FROM ANY INACCURACIES OR FROM LOSS OF PROFITS, BUSINESS OR GOODWILL, ON ANY THEORY OF LIABILITY, WHETHER ARISING UNDER TORT (INCLUDING NEGLIGENCE), CONTRACT OR OTHERWISE, WHETHER OR NOT BIGGE HAS BEEN ADVISED OR IS AWARE OF THE POSSIBILITY OF SUCH DAMAGES. IF, NOTWITHSTANDING ANY OTHER PROVISIONS OF THIS AGREEMENT, BIGGE IS FOUND TO BE LIABLE TO USER FOR ANY DAMAGE OR LOSS THAT ARISES OUT OF OR IS IN ANY WAY CONNECTED TO THIS DOCUMENT, BIGGE'S ENTIRE LIABILITY FOR DIRECT DAMAGES UNDER THIS AGREEMENT SHALL BE LIMITED TO FIFTY DOLLARS (\$50.00).

① TOP & BOTTOM FLANGE PLATE  
(4) REQUIRED AS SHOWN  
MATERIAL = A514



③ TOP FLANGE PLATE  
(4) REQUIRED AS SHOWN  
MATERIAL = A514

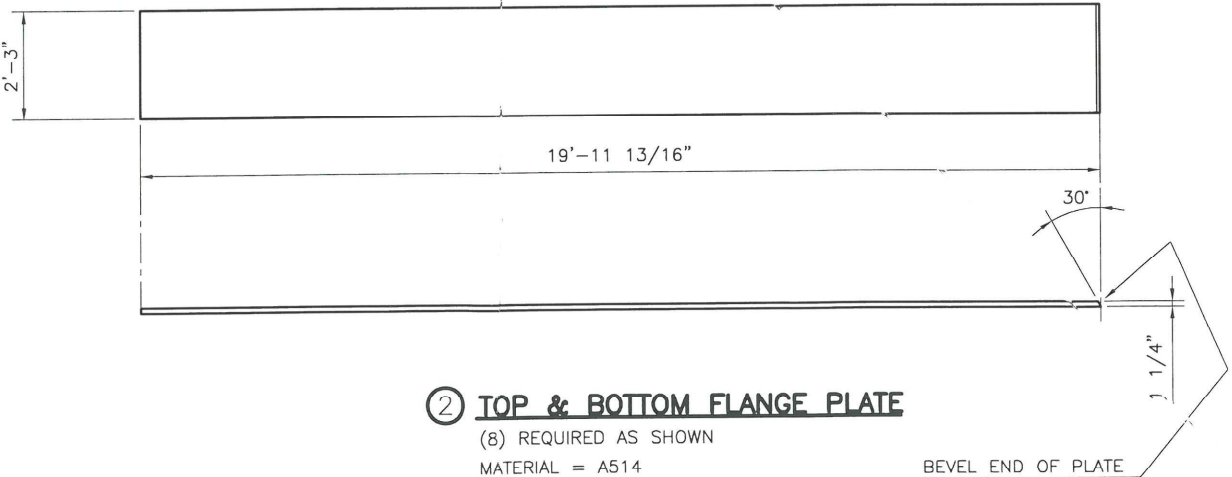


④ BOTTOM FLANGE PLATE  
(4) REQUIRED AS SHOWN  
MATERIAL = A514

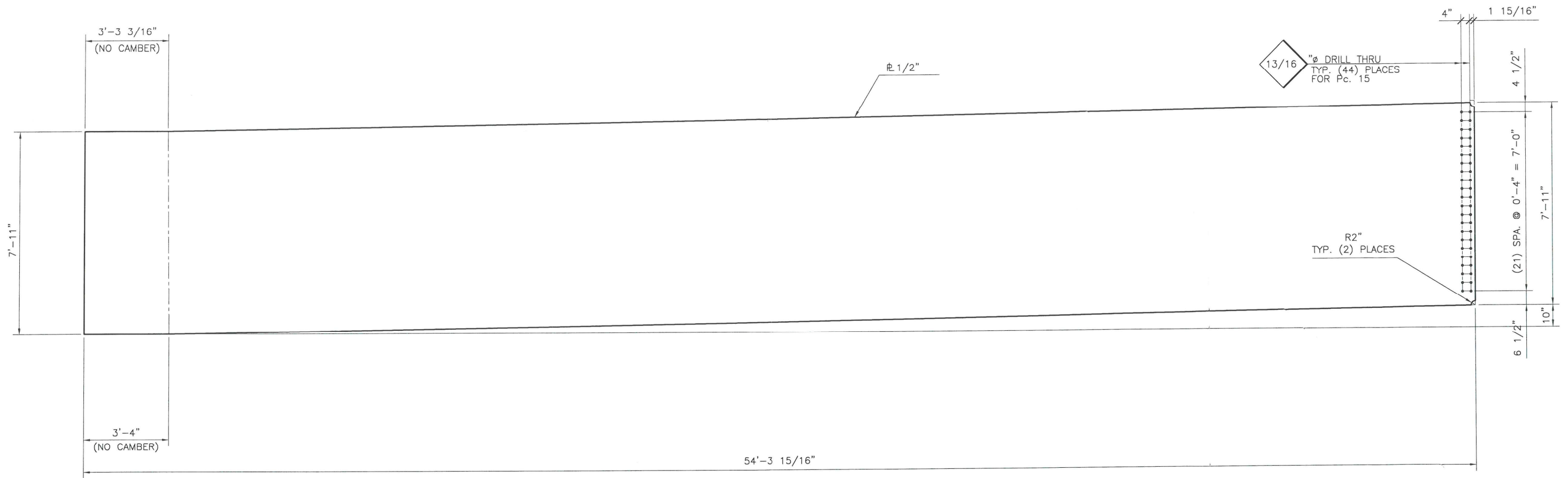
NOTES:

- FOR GENERAL NOTES SEE DWG. GN1
- PLANNED INSPECTIONS:  
WELDS : 100% VISUAL, M.T. PER GENERAL NOTES.  
100% U.T. 1" FLANGE PL TO 1 1/4" FLANGE PL  
100% U.T. ALL SHOP SPLICES IN FLANGES.
- SEE SHEET 10 OF 10 FOR MATERIAL LIST.

② TOP & BOTTOM FLANGE PLATE  
(8) REQUIRED AS SHOWN  
MATERIAL = A514



0	ORIGINAL ISSUE	10/18/02	DM	10/21/02	CF		
NO.	REVISIONS	DATE	BY	DATE	BY	DATE	BY
		DRAWN		CHECKED		APPROVED	
This drawing contains information proprietary to Bigge Crane and Rigging Co. It is submitted in confidence and is to be used solely for the purpose for which it is furnished and returned upon request. This drawing and such information is not to be reproduced, transmitted, disclosed or used in whole or in part without the written authorization of Bigge Crane and Rigging Co.							
<b>Bigge</b> <small>Established 1916</small> CRANE and RIGGING CO.							
TG-5/6 TRUCKING GIRDERS DETAILS - FLANGE PLATES MAIN HAULING GIRDER 26 DOLLY TRAILER							
SCALE	1/2" = 1'-0"	ENGR. No.	DWG. No.	SHEET	REV.		
JOB NO.	23090	02E26	TG-5/6	6 of 10	0		



⑥ **WEB PLATE**  
 (4) REQUIRED AS SHOWN  
 MATERIAL = A514

THIS DOCUMENT IS PROVIDED "AS IS, WHERE IS" AND NO REPRESENTATIONS OR WARRANTIES ARE MADE, EXPRESSED OR IMPLIED. RELIANCE ON THE DOCUMENT IS AT THE SOLE RISK OF THE USER. TO THE EXTENT NOT PROHIBITED BY LAW, UNDER NO CIRCUMSTANCES SHALL BIGGE BE LIABLE WITH RESPECT TO THIS DOCUMENT FOR SPECIAL, INDIRECT, INCIDENTAL, OR CONSEQUENTIAL DAMAGES, INCLUDING WITHOUT LIMITATION, DAMAGES RESULTING FROM ANY INACCURACIES OR FROM LOSS OF PROFITS, BUSINESS OR GOODWILL, ON ANY THEORY OF LIABILITY, WHETHER ARISING UNDER TORT (INCLUDING NEGLIGENCE), CONTRACT OR OTHERWISE, WHETHER OR NOT BIGGE HAS BEEN ADVISED OR IS AWARE OF THE POSSIBILITY OF SUCH DAMAGES. IF, NOTWITHSTANDING ANY OTHER PROVISIONS OF THIS AGREEMENT, BIGGE IS FOUND TO BE LIABLE TO USER FOR ANY DAMAGE OR LOSS THAT ARISES OUT OF OR IS IN ANY WAY CONNECTED TO THIS DOCUMENT, BIGGE'S ENTIRE LIABILITY FOR DIRECT DAMAGES UNDER THIS AGREEMENT SHALL BE LIMITED TO FIFTY DOLLARS (\$50.00).

**NOTES:**

- FOR GENERAL NOTES SEE DWG. GN1
- PLANNED INSPECTIONS:**  
 WELDS : 100% VISUAL, M.T. PER GENERAL NOTES.  
 100% U.T. 1" FLANGE PL TO 1 1/4" FLANGE PL  
 100% U.T. ALL SHOP SPLICES IN FLANGES.
- SEE SHEET 10 of 10 FOR MATERIAL LIST.

0	ORIGINAL ISSUE	10/18/02	DM	10/21/02	CF		
NO.	REVISIONS	DATE	BY	DATE	BY	DATE	BY
		DRAWN		CHECKED		APPROVED	

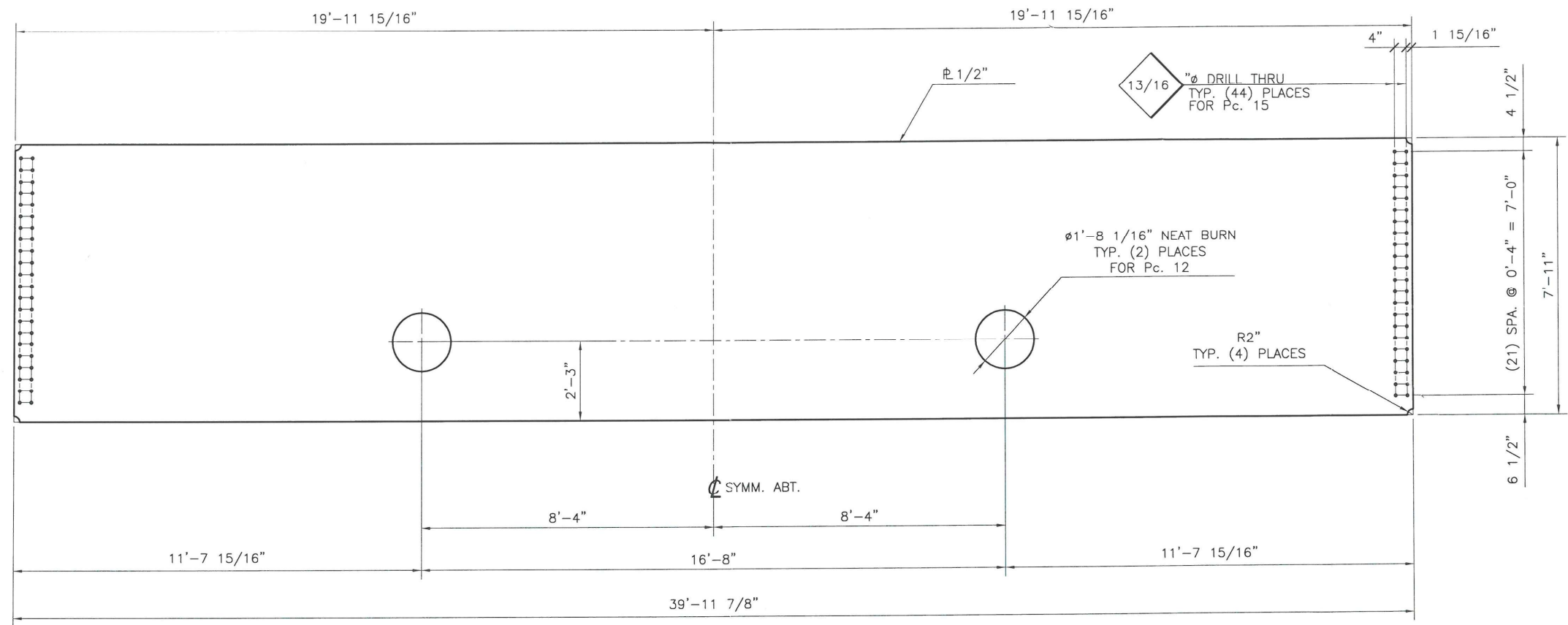
This drawing contains information proprietary to Bigge Crane and Rigging Co. It is submitted in confidence and is to be used solely for the purpose for which it is furnished and returned upon request. This drawing and such information is not to be reproduced, transmitted, disclosed or used in whole or in part without the written authorization of Bigge Crane and Rigging Co.

**Bigge** Established 1916  
 CRANE and RIGGING CO.

**TG-5/6 TRUCKING GIRDERS**  
**DETAILS - WEB PLATES**  
**MAIN HAULING GIRDER**  
**26 DOLLY TRAILER**

SCALE 1/2" = 1'-0"	ENGR. No. 02E26	DWG. No. TG-5/6	SHEET 7 of 10	REV. 0
JOB NO. 23090				





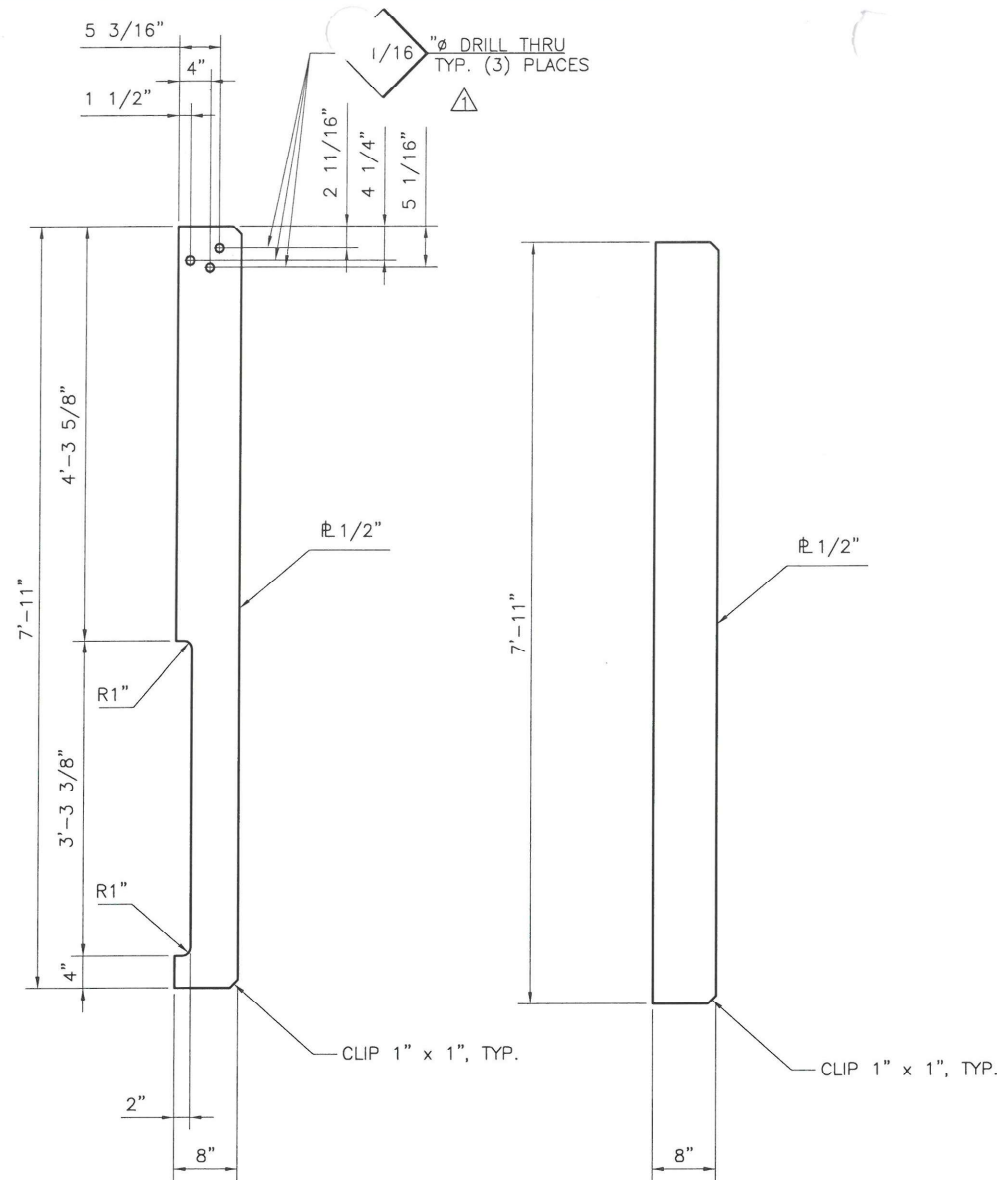
⑤ **WEB PLATE**  
(2) REQUIRED AS SHOWN  
MATERIAL = A514

THIS DOCUMENT IS PROVIDED "AS IS, WHERE IS" AND NO REPRESENTATIONS OR WARRANTIES ARE MADE, EXPRESSED OR IMPLIED. RELIANCE ON THE DOCUMENT IS AT THE SOLE RISK OF THE USER. TO THE EXTENT NOT PROHIBITED BY LAW, UNDER NO CIRCUMSTANCES SHALL BIGGE BE LIABLE WITH RESPECT TO THIS DOCUMENT FOR SPECIAL, INDIRECT, INCIDENTAL, OR CONSEQUENTIAL DAMAGES, INCLUDING WITHOUT LIMITATION, DAMAGES RESULTING FROM ANY INACCURACIES OR FROM LOSS OF PROFITS, BUSINESS OR GOODWILL, ON ANY THEORY OF LIABILITY, WHETHER ARISING UNDER TORT (INCLUDING NEGLIGENCE), CONTRACT OR OTHERWISE, WHETHER OR NOT BIGGE HAS BEEN ADVISED OR IS AWARE OF THE POSSIBILITY OF SUCH DAMAGES. IF, NOTWITHSTANDING ANY OTHER PROVISIONS OF THIS AGREEMENT, BIGGE IS FOUND TO BE LIABLE TO USER FOR ANY DAMAGE OR LOSS THAT ARISES OUT OF OR IS IN ANY WAY CONNECTED TO THIS DOCUMENT, BIGGE'S ENTIRE LIABILITY FOR DIRECT DAMAGES UNDER THIS AGREEMENT SHALL BE LIMITED TO FIFTY DOLLARS (\$50.00).

**NOTES:**

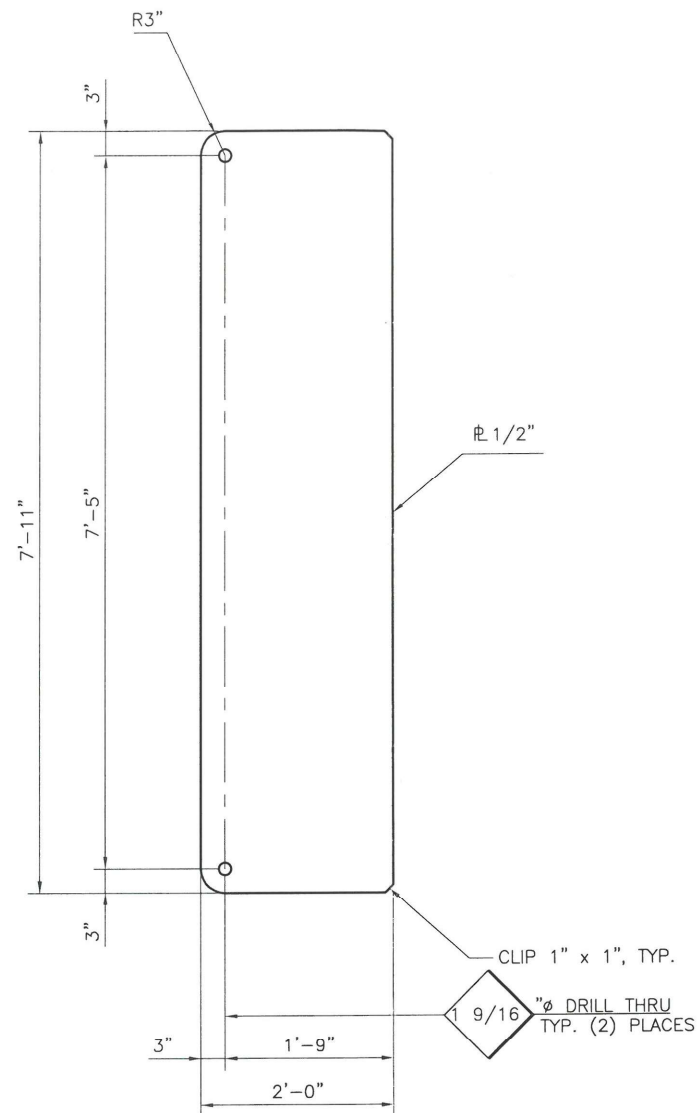
- FOR GENERAL NOTES SEE DWG. GN1
- PLANNED INSPECTIONS:**  
WELDS : 100% VISUAL, M.T. PER GENERAL NOTES.  
100% U.T. 1" FLANGE PL TO 1 1/4" FLANGE PL  
100% U.T. ALL SHOP SPLICES IN FLANGES.
- SEE SHEET 10 OF 10 FOR MATERIAL LIST.

0	ORIGINAL ISSUE	10/18/02	DM	10/21/02	CF		
NO.	REVISIONS	DATE	BY	DATE	BY	DATE	BY
		DRAWN		CHECKED		APPROVED	
This drawing contains information proprietary to Bigge Crane and Rigging Co. It is submitted in confidence and is to be used solely for the purpose for which it is furnished and returned upon request. This drawing and such information is not to be reproduced, transmitted, disclosed or used in whole or in part without the written authorization of Bigge Crane and Rigging Co.							
<b>Bigge</b> <small>Established 1916</small> <b>CRANE and RIGGING CO.</b>							
<b>TG-5/6 TRUCKING GIRDERS</b> <b>DETAILS - WEB PLATES</b> <b>MAIN HAULING GIRDER</b> <b>26 DOLLY TRAILER</b>							
SCALE 1/2" = 1'-0"	ENGR. No.	DWG. No.	SHEET		REV.		
JOB NO. 23090	02E26	TG-5/6	8 of 10		0		

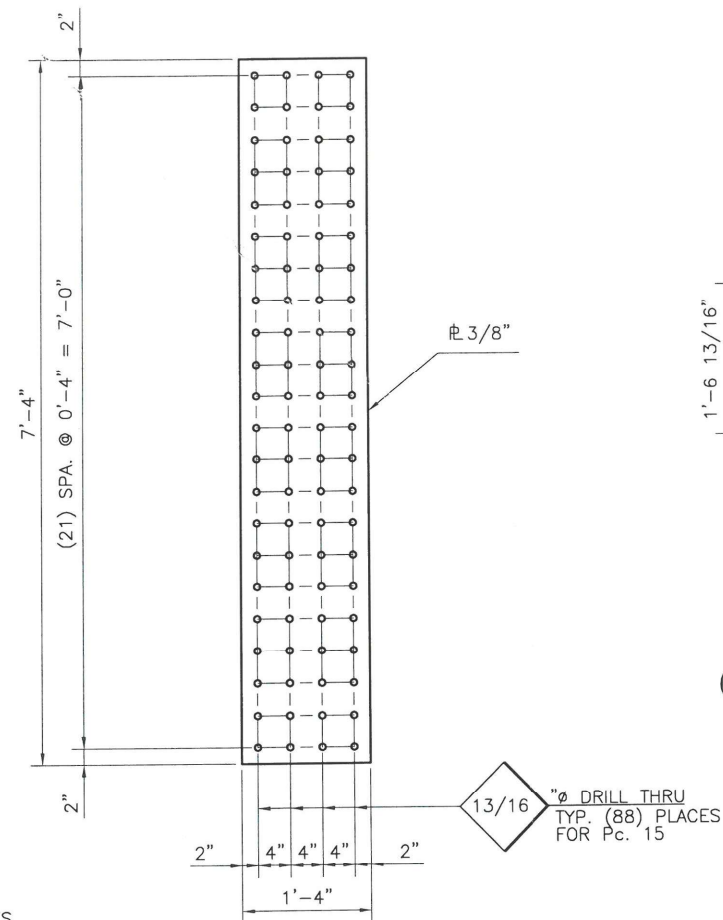


**11 STIFFNER PLATE**  
(4) REQUIRED AS SHOWN  
MATERIAL = A514

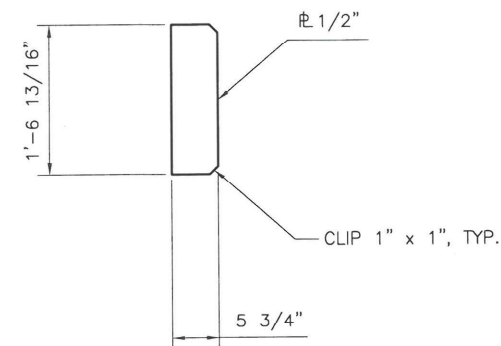
**7 STIFFNER PLATE**  
(112) REQUIRED AS SHOWN  
MATERIAL = A514



**8 STIFFENER PLATE**  
(12) REQUIRED AS SHOWN  
MATERIAL = A514



**9 SPLICE PLATE**  
(8) REQUIRED AS SHOWN  
MATERIAL = A572 Gr. 50



**10 STIFFENER PLATE**  
(16) REQUIRED AS SHOWN  
MATERIAL = A514

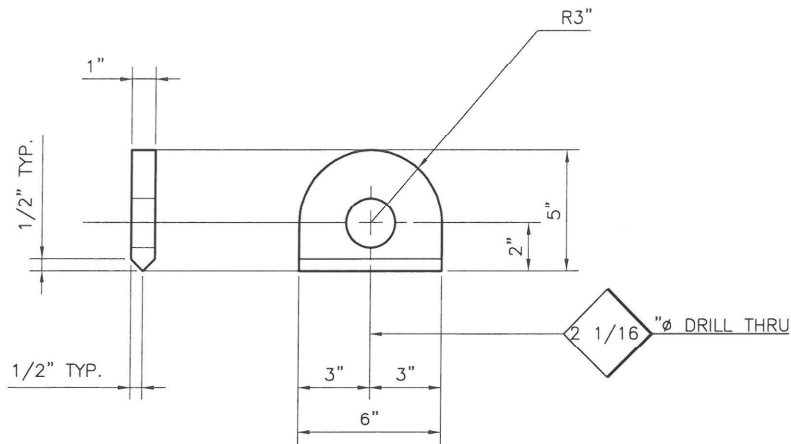
THIS DOCUMENT IS PROVIDED "AS IS, WHERE IS" AND NO REPRESENTATIONS OR WARRANTIES ARE MADE, EXPRESSED OR IMPLIED. RELIANCE ON THE DOCUMENT IS AT THE SOLE RISK OF THE USER. TO THE EXTENT NOT PROHIBITED BY LAW, UNDER NO CIRCUMSTANCES SHALL BIGGE BE LIABLE WITH RESPECT TO THIS DOCUMENT FOR SPECIAL, INDIRECT, INCIDENTAL, OR CONSEQUENTIAL DAMAGES, INCLUDING WITHOUT LIMITATION, DAMAGES RESULTING FROM ANY INACCURACIES OR FROM LOSS OF PROFITS, BUSINESS OR GOODWILL, ON ANY THEORY OF LIABILITY, WHETHER ARISING UNDER TORT (INCLUDING NEGLIGENCE), CONTRACT OR OTHERWISE, WHETHER OR NOT BIGGE HAS BEEN ADVISED OR IS AWARE OF THE POSSIBILITY OF SUCH DAMAGES. IF, NOTWITHSTANDING ANY OTHER PROVISIONS OF THIS AGREEMENT, BIGGE IS FOUND TO BE LIABLE TO USER FOR ANY DAMAGE OR LOSS THAT ARISES OUT OF OR IS IN ANY WAY CONNECTED TO THIS DOCUMENT, BIGGE'S ENTIRE LIABILITY FOR DIRECT DAMAGES UNDER THIS AGREEMENT SHALL BE LIMITED TO FIFTY DOLLARS (\$50.00).

#### NOTES:

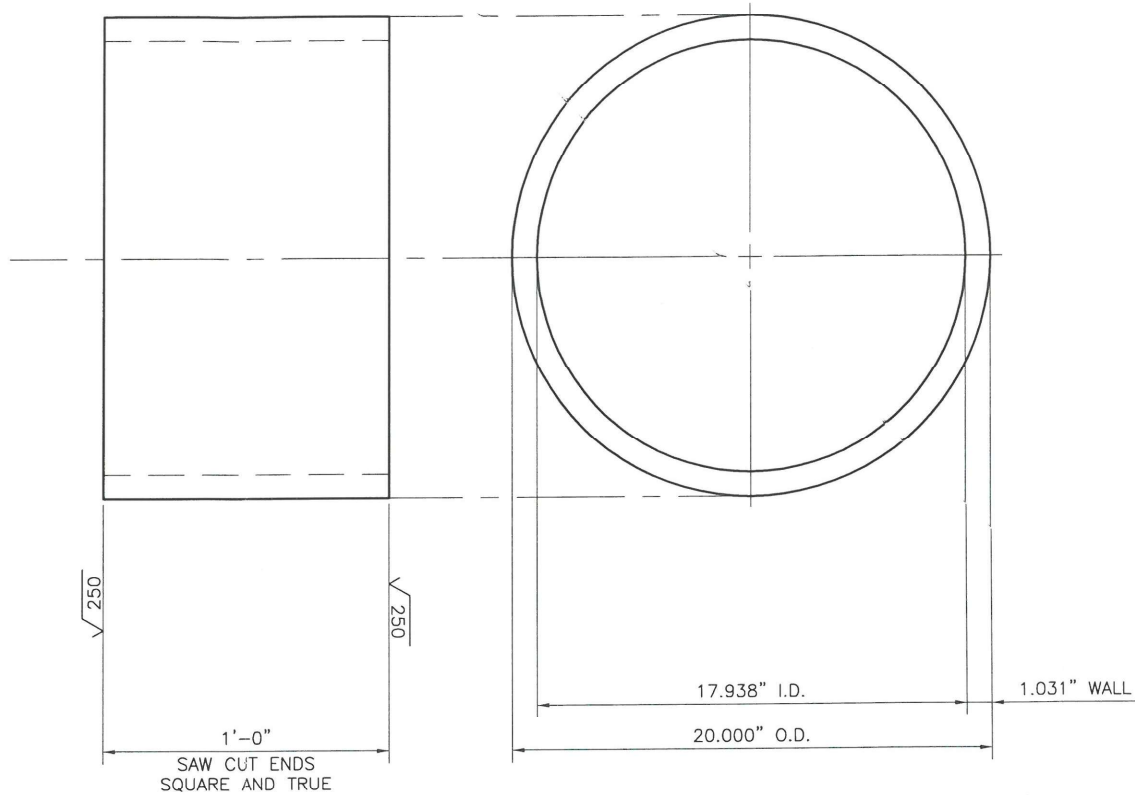
- FOR GENERAL NOTES SEE DWG. GN1
- PLANNED INSPECTIONS:  
WELDS : 100% VISUAL, M.T. PER GENERAL NOTES.  
100% U.T. 1" FLANGE PL TO 1 1/4" FLANGE PL  
100% U.T. ALL SHOP SPLICES IN FLANGES.
- SEE SHEET 10 OF 10 FOR MATERIAL LIST.

2	QTY. 112 WAS 108,	10/28/02	DM	10/28/02	CF		
1	QTY. 108 WAS 100, ADD HOLES Pc. 11	10/23/02	DM	10/23/02	RB		
0	ORIGINAL ISSUE	10/18/02	DM	10/21/02	CF		
NO.	REVISIONS	DATE	BY	DATE	BY	DATE	BY
		DRAWN		CHECKED		APPROVED	
This drawing contains information proprietary to Bigge Crane and Rigging Co. It is submitted in confidence and is to be used solely for the purpose for which it is furnished and returned upon request. This drawing and such information is not to be reproduced, transmitted, disclosed or used in whole or in part without the written authorization of Bigge Crane and Rigging Co.							
<div><div><b><i>Bigge</i></b></div><div><i>Established 1916</i></div><div><b><i>CRANE and RIGGING CO.</i></b></div></div>							
<div>TG-5/6 TRUCKING GIRDERS</div> <div>DETAILS – STIFFENERS &amp; SPLICE PLATES</div> <div>MAIN HAULING GIRDER</div> <div>26 DOLLY TRAILER</div>							
SCALE	1" = 1'-0"	ENGR. No.	DWG. No.		SHEET	REV.	
JOB NO. 23090		02E26	TG-5/6		9 of 10	2	

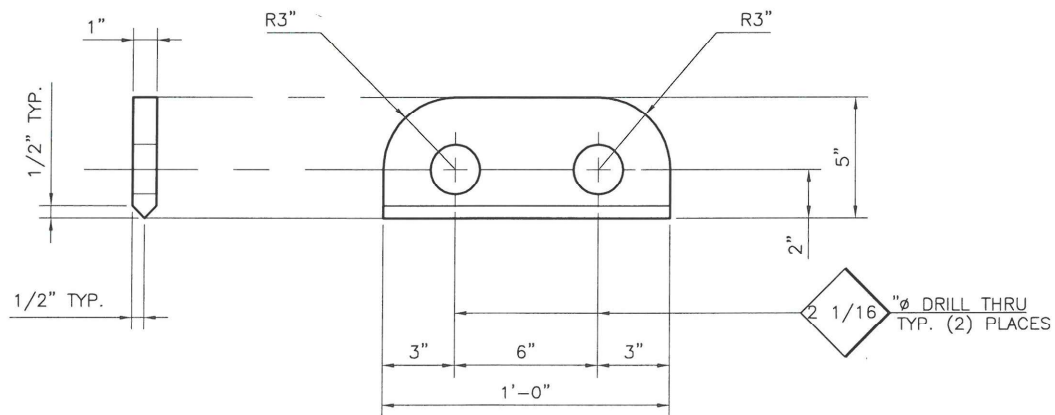




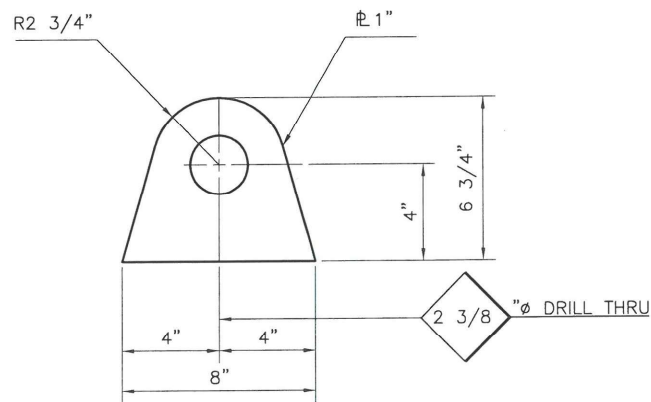
**14 LUG PLATE**  
(16) REQUIRED AS SHOWN  
MATERIAL = A514



**12 PIPE**  
(4) REQUIRED AS SHOWN  
MATERIAL = A53 Gr. B



**13 LUG PLATE**  
(8) REQUIRED AS SHOWN  
MATERIAL = A514



**16 LUG PLATE**  
(8) REQUIRED AS SHOWN  
MATERIAL = A514

BILL OF MATERIALS					
MK.	QTY	DESCRIPTION	WEIGHT	MTL.	REMARK
1	4	1.5" x 27" x 39'-11 5/8"	22,033	A514	
2	8	1.25" x 27" x 19'-11 13/16"	18,361	A514	
3	4	1" x 27" x 34'-4"	12,605	A514	
4	4	1" x 27" x 34'-4"	12,605	A514	
5	2	1 1/2" x 95" x 39'-11 7/8"	12,927	A514	
6	4	1 1/2" x 95 5/8"x54'-5 9/16"	35,415	A514	(GROSS)
7	112	1 1/2" x 8" x 7'-11"	12,059	A514	
8	12	1 1/2" x 24" x 7'-11"	3,879	A514	
9	8	3/8" x 16" x 7'-4"	1,198	A572	GR.50
10	16	PL 1/2" x 5 3/4"x1'-6 13/16	245	A514	
11	4	PL 1/2" x 8" x 7'-11"	431	A514	
12	4	PIPE 20" SCH 80 x 1'-0"	835	A53	Gr B
13	8	PL 1" x 5" x 1'-0"	136	A514	
14	16	PL 1" x 5" x 0'-6"	136	A514	
15	370	H.S.B. 3/4" x 2 1/2" LG W/HN & HW	A325	18EXTRA	
16	8	PL 1" x 6 3/4" x 0'-8"	122	A514	
TOTAL			132,989	Lbs.	

THIS DOCUMENT IS PROVIDED "AS IS, WHERE IS" AND NO REPRESENTATIONS OR WARRANTIES ARE MADE, EXPRESSED OR IMPLIED. RELIANCE ON THE DOCUMENT IS AT THE SOLE RISK OF THE USER. TO THE EXTENT NOT PROHIBITED BY LAW, UNDER NO CIRCUMSTANCES SHALL BIGGE BE LIABLE WITH RESPECT TO THIS DOCUMENT FOR SPECIAL, INDIRECT, INCIDENTAL, OR CONSEQUENTIAL DAMAGES, INCLUDING WITHOUT LIMITATION, DAMAGES RESULTING FROM ANY INACCURACIES OR FROM LOSS OF PROFITS, BUSINESS OR GOODWILL, ON ANY THEORY OF LIABILITY, WHETHER ARISING UNDER TORT (INCLUDING NEGLIGENCE), CONTRACT OR OTHERWISE, WHETHER OR NOT BIGGE HAS BEEN ADVISED OR IS AWARE OF THE POSSIBILITY OF SUCH DAMAGES. IF, NOTWITHSTANDING ANY OTHER PROVISIONS OF THIS AGREEMENT, BIGGE IS FOUND TO BE LIABLE TO USER FOR ANY DAMAGE OR LOSS THAT ARISES OUT OF OR IS IN ANY WAY CONNECTED TO THIS DOCUMENT, BIGGE'S ENTIRE LIABILITY FOR DIRECT DAMAGES UNDER THIS AGREEMENT SHALL BE LIMITED TO FIFTY DOLLARS (\$50.00).

2	QTY. 112 WAS 108	10/28/02	DM	10/28/02	CF		
1	QTY. 8 WAS 4, ADD Pc 16	10/23/02	DM	10/23/02	RB		
0	ORIGINAL ISSUE	10/18/02	DM	10/21/02	CF		
		DATE	BY	DATE	BY	DATE	BY
NO.	REVISIONS	DRAWN	CHECKED	APPROVED			
This drawing contains information proprietary to Bigge Crane and Rigging Co. It is submitted in confidence and is to be used solely for the purpose for which it is furnished and returned upon request. This drawing and such information is not to be reproduced, transmitted, disclosed or used in whole or in part without the written authorization of Bigge Crane and Rigging Co.							
<div><div><b><i>BIGGE</i></b></div><div><i>Established 1916</i></div><div><b><i>CRANE and RIGGING CO.</i></b></div></div>							
<div><div>TG-5/6 TRUCKING GIRDERS</div><div>DETAILS</div><div>MAIN HAULING GIRDER</div><div>26 DOLLY TRAILER</div></div>							
SCALE	3" = 1'-0"	ENGR. No.	DWG. No.	SHEET	REV.		
JOB NO.	23090	02E26	TG-5/6	10 of 10	2		

#### NOTES:

- FOR GENERAL NOTES SEE DWG. GN1
- PLANNED INSPECTIONS:  
WELDS : 100% VISUAL, M.T. PER GENERAL NOTES.  
100% U.T. 1" FLANGE PL TO 1 1/4" FLANGE PL  
100% U.T. ALL SHOP SPLICES IN FLANGES.
- SEE SHEET 10 of 10 FOR MATERIAL LIST.