
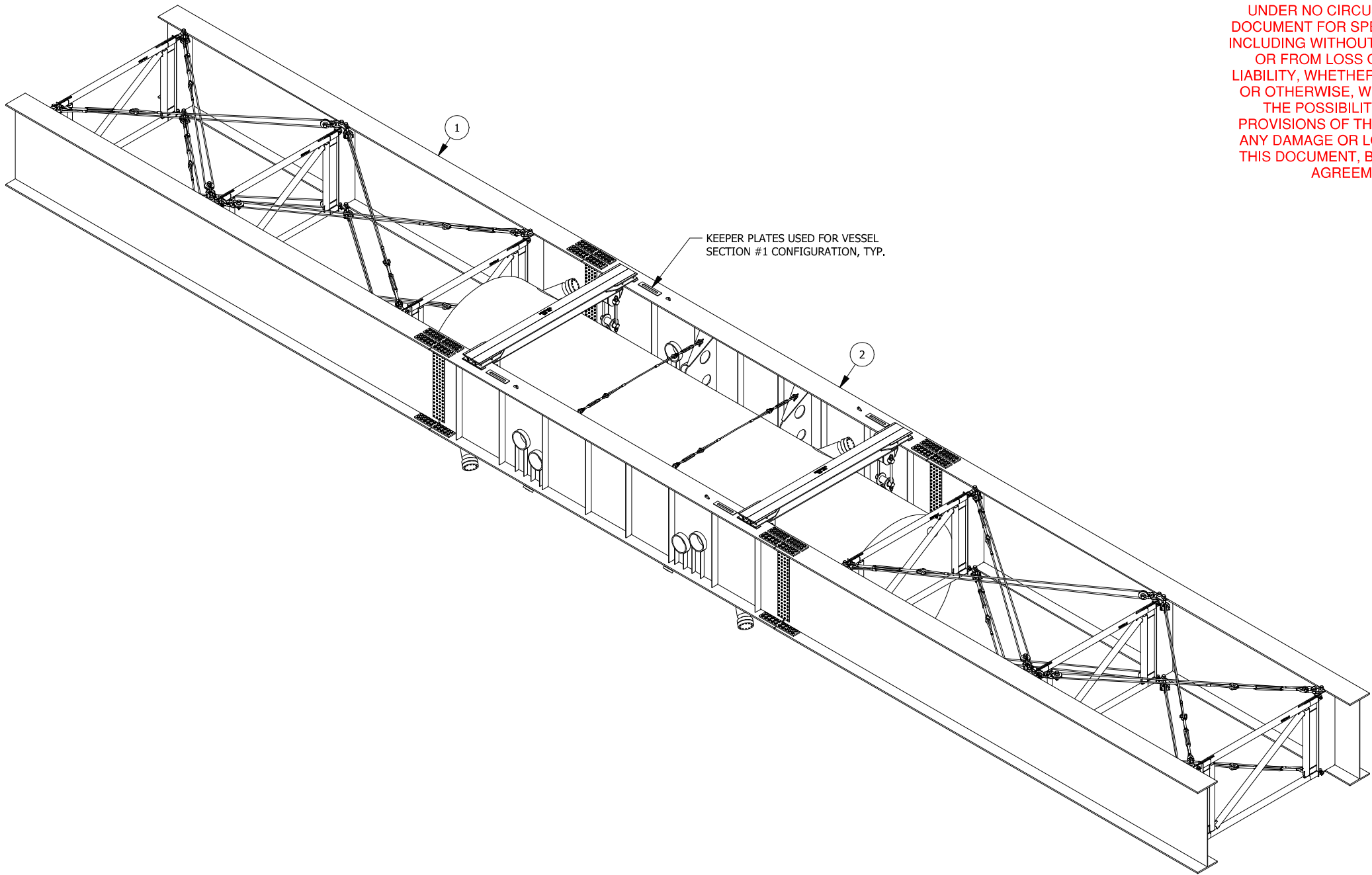


**END ELEVATION VIEW**  
NOTE: VIEW PARTIALLY BROKEN OUT TO SHOW SPLICE PLATE MOUNTING HARDWARE

THIS DOCUMENT IS PROVIDED "AS IS, WHERE IS" AND NO REPRESENTATIONS OR WARRANTIES ARE MADE, EXPRESSED OR IMPLIED. RELIANCE ON THE DOCUMENT IS AT THE SOLE RISK OF THE USER. TO THE EXTENT NOT PROHIBITED BY LAW, UNDER NO CIRCUMSTANCES SHALL BIGGE BE LIABLE WITH RESPECT TO THIS DOCUMENT FOR SPECIAL, INDIRECT, INCIDENTAL, OR CONSEQUENTIAL DAMAGES, INCLUDING WITHOUT LIMITATION, DAMAGES RESULTING FROM ANY INACCURACIES OR FROM LOSS OF PROFITS, BUSINESS OR GOODWILL, ON ANY THEORY OF LIABILITY, WHETHER ARISING UNDER TORT (INCLUDING NEGLIGENCE), CONTRACT OR OTHERWISE, WHETHER OR NOT BIGGE HAS BEEN ADVISED OR IS AWARE OF THE POSSIBILITY OF SUCH DAMAGES. IF, NOTWITHSTANDING ANY OTHER PROVISIONS OF THIS AGREEMENT, BIGGE IS FOUND TO BE LIABLE TO USER FOR ANY DAMAGE OR LOSS THAT ARISES OUT OF OR IS IN ANY WAY CONNECTED TO THIS DOCUMENT, BIGGE'S ENTIRE LIABILITY FOR DIRECT DAMAGES UNDER THIS AGREEMENT SHALL BE LIMITED TO FIFTY DOLLARS (\$50.00).

1	REVISED CENTERLINE NOTE	9/17/2014	MWJ	9/17/2014	VLH	9/17/2014	VLH
0	ISSUED FOR CONSTRUCTION	8/22/2014	MWJ	8/22/2014	VLH	8/22/2014	VLH
NO.	REVISIONS	DATE	BY	DATE	BY	DATE	BY
		DRAWN		CHECKED		APPROVED	
This drawing contains information proprietary to Bigge Crane and Rigging Co. It is submitted in confidence and is to be used solely for the purpose for which it is furnished and returned upon request. This drawing and such information is not to be reproduced, transmitted, disclosed or used in whole or in part without the written authorization of Bigge Crane and Rigging Co.							
				10700 Bigge Ave., San Leandro, CA 94577 www.BIGGE.com			
				Established 1916 <b>CRANE and RIGGING CO.</b>			
TRUCKING GIRDER GENERAL ARRANGEMENT VESSEL SECTION #1 POSITIONING ORTHO VIEWS REACTOR VESSEL SECTIONS 1 & 2 TRANSPORT CALUMET REFINERY PROJECT							
SCALE: (U.N.O) 1/16"=1'-0"	SIZE B	PROJECT No. 09199	DWG. No. 78.2		SHEET 2 of 6		REV. 1


THIS DOCUMENT IS PROVIDED "AS IS, WHERE IS" AND NO REPRESENTATIONS OR WARRANTIES ARE MADE, EXPRESSED OR IMPLIED. RELIANCE ON THE DOCUMENT IS AT THE SOLE RISK OF THE USER. TO THE EXTENT NOT PROHIBITED BY LAW, UNDER NO CIRCUMSTANCES SHALL BIGGE BE LIABLE WITH RESPECT TO THIS DOCUMENT FOR SPECIAL, INDIRECT, INCIDENTAL, OR CONSEQUENTIAL DAMAGES, INCLUDING WITHOUT LIMITATION, DAMAGES RESULTING FROM ANY INACCURACIES OR FROM LOSS OF PROFITS, BUSINESS OR GOODWILL, ON ANY THEORY OF LIABILITY, WHETHER ARISING UNDER TORT (INCLUDING NEGLIGENCE), CONTRACT OR OTHERWISE, WHETHER OR NOT BIGGE HAS BEEN ADVISED OR IS AWARE OF THE POSSIBILITY OF SUCH DAMAGES. IF, NOTWITHSTANDING ANY OTHER PROVISIONS OF THIS AGREEMENT, BIGGE IS FOUND TO BE LIABLE TO USER FOR ANY DAMAGE OR LOSS THAT ARISES OUT OF OR IS IN ANY WAY CONNECTED TO THIS DOCUMENT, BIGGE'S ENTIRE LIABILITY FOR DIRECT DAMAGES UNDER THIS AGREEMENT SHALL BE LIMITED TO FIFTY DOLLARS (\$50.00).

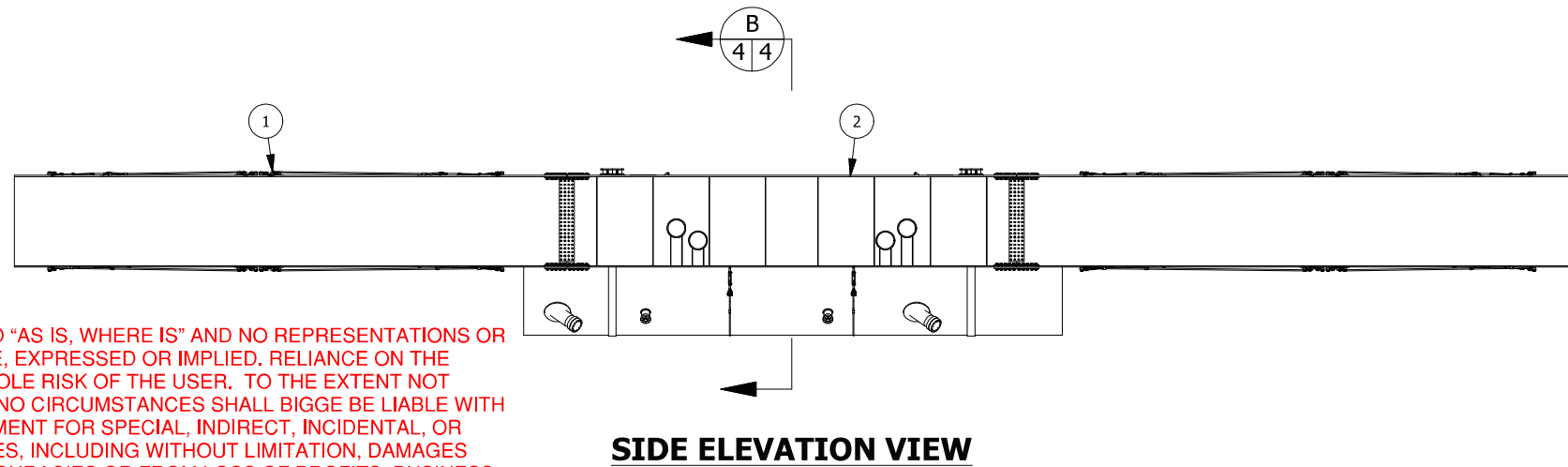
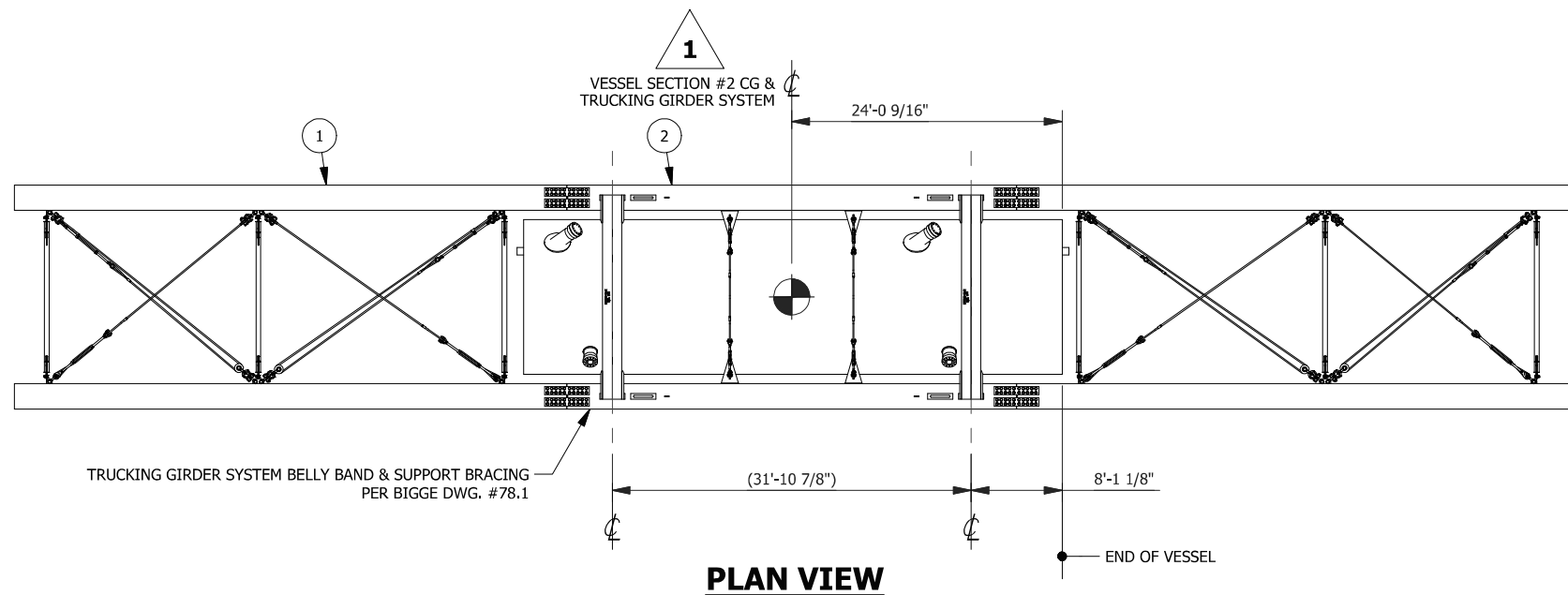


ISOMETRIC VIEW

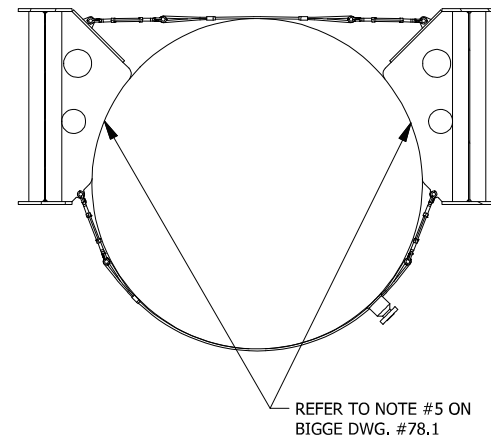
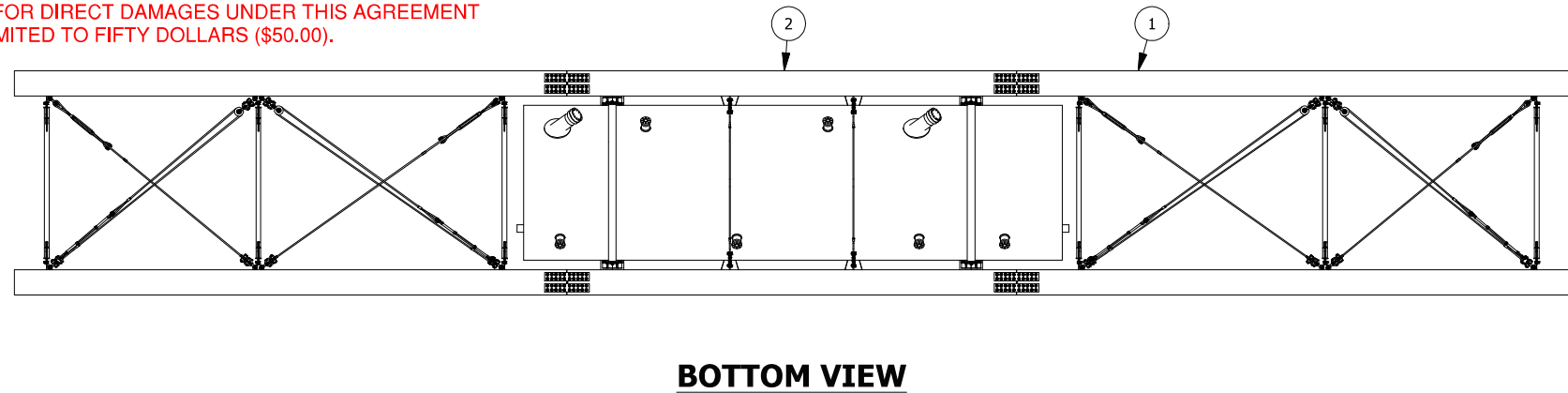
TRUCKING GIRDER GENERAL ARRANGEMENT - VESSEL SECTION #2

APPROX. ASSEMBLED WEIGHT: 837,470 LBS.±

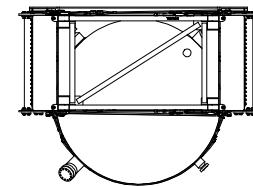
0	ISSUED FOR CONSTRUCTION		8/22/2014	MWJ	8/22/2014	VLH	8/22/2014	VLH
NO.	REVISIONS		DATE	BY	DATE	BY	DATE	BY
			DRAWN		CHECKED		APPROVED	
This drawing contains information proprietary to Bigge Crane and Rigging Co. It is submitted in confidence and is to be used solely for the purpose for which it is furnished and returned upon request. This drawing and such information is not to be reproduced, transmitted, disclosed or used in whole or in part without the written authorization of Bigge Crane and Rigging Co.								
			10700 Bigge Ave., San Leandro, CA 94577 www.BIGGE.com					
			Established 1916 <b>CRANE and RIGGING CO.</b>					
TRUCKING GIRDER GENERAL ARRANGEMENT VESSEL SECTION #2 POSITIONING ISOMETRIC VIEW REACTOR VESSEL SECTIONS 1 & 2 TRANSPORT CALUMET REFINERY PROJECT								
SCALE: (U.N.O)	SIZE	PROJECT No.	DWG. No.		SHEET		REV.	
NTS	B	09199	78.2		3 of 6		1	




THIS DOCUMENT IS PROVIDED "AS IS, WHERE IS" AND NO REPRESENTATIONS OR WARRANTIES ARE MADE, EXPRESSED OR IMPLIED. RELIANCE ON THE DOCUMENT IS AT THE SOLE RISK OF THE USER. TO THE EXTENT NOT PROHIBITED BY LAW, UNDER NO CIRCUMSTANCES SHALL BIGGE BE LIABLE WITH RESPECT TO THIS DOCUMENT FOR SPECIAL, INDIRECT, INCIDENTAL, OR CONSEQUENTIAL DAMAGES, INCLUDING WITHOUT LIMITATION, DAMAGES RESULTING FROM ANY INACCURACIES OR FROM LOSS OF PROFITS, BUSINESS OR GOODWILL, ON ANY THEORY OF LIABILITY, WHETHER ARISING UNDER TORT (INCLUDING NEGLIGENCE), CONTRACT OR OTHERWISE, WHETHER OR NOT BIGGE HAS BEEN ADVISED OR IS AWARE OF THE POSSIBILITY OF SUCH DAMAGES. IF, NOTWITHSTANDING ANY OTHER PROVISIONS OF THIS AGREEMENT, BIGGE IS FOUND TO BE LIABLE TO USER FOR ANY DAMAGE OR LOSS THAT ARISES OUT OF OR IS IN ANY WAY CONNECTED TO THIS DOCUMENT, BIGGE'S ENTIRE LIABILITY FOR DIRECT DAMAGES UNDER THIS AGREEMENT SHALL BE LIMITED TO FIFTY DOLLARS (\$50.00).



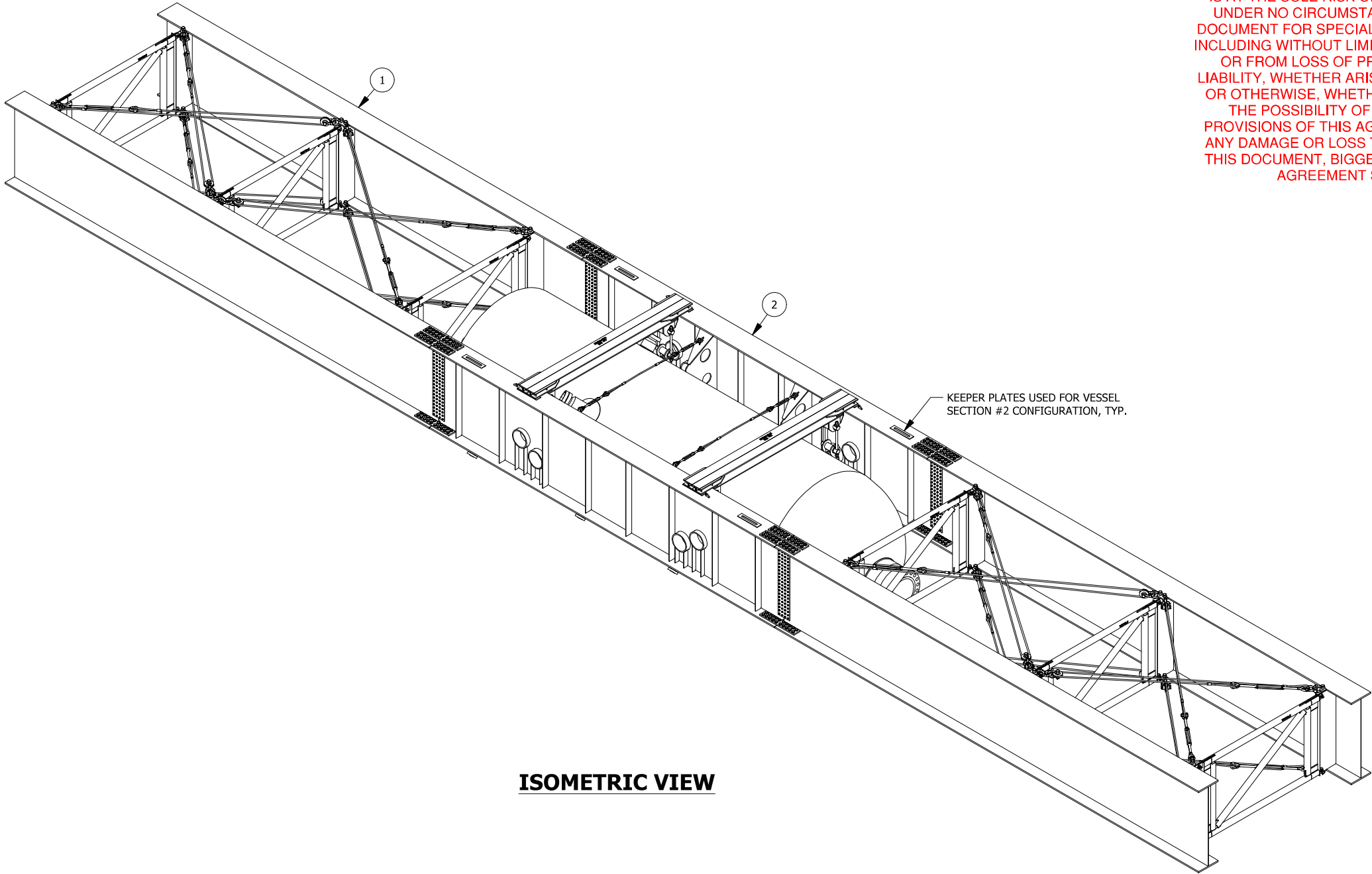
**SECTION**  
SCALE: 1/8" = 1'-0"



1	REVISED CENTERLINE NOTE	9/17/2014	MWJ	9/17/2014	VLH	9/17/2014	VLH
0	ISSUED FOR CONSTRUCTION	8/22/2014	MWJ	8/22/2014	VLH	8/22/2014	VLH
NO.	REVISIONS	DATE	BY	DATE	BY	DATE	BY
		DRAWN		CHECKED		APPROVED	
This drawing contains information proprietary to Bigge Crane and Rigging Co. It is submitted in confidence and is to be used solely for the purpose for which it is furnished and returned upon request. This drawing and such information is not to be reproduced, transmitted, disclosed or used in whole or in part without the written authorization of Bigge Crane and Rigging Co.							
				10700 Bigge Ave., San Leandro, CA 94577 www.BIGGE.com			
				Established 1916			
<b>CRANE and RIGGING CO.</b>							
TRUCKING GIRDER GENERAL ARRANGEMENT VESSEL SECTION #2 POSITIONING ORTHO VIEWS REACTOR VESSEL SECTIONS 1 & 2 TRANSPORT CALUMET REFINERY PROJECT							
SCALE: (U.N.O) 1/16"=1'-0"		SIZE B		PROJECT No. 09199		DWG. No. 78.2	
				SHEET 4 of 6		REV. 1	




THIS DOCUMENT IS PROVIDED “AS IS, WHERE IS” AND NO REPRESENTATIONS OR WARRANTIES ARE MADE, EXPRESSED OR IMPLIED. RELIANCE ON THE DOCUMENT IS AT THE SOLE RISK OF THE USER. TO THE EXTENT NOT PROHIBITED BY LAW, UNDER NO CIRCUMSTANCES SHALL BIGGE BE LIABLE WITH RESPECT TO THIS DOCUMENT FOR SPECIAL, INDIRECT, INCIDENTAL, OR CONSEQUENTIAL DAMAGES, INCLUDING WITHOUT LIMITATION, DAMAGES RESULTING FROM ANY INACCURACIES OR FROM LOSS OF PROFITS, BUSINESS OR GOODWILL, ON ANY THEORY OF LIABILITY, WHETHER ARISING UNDER TORT (INCLUDING NEGLIGENCE), CONTRACT OR OTHERWISE, WHETHER OR NOT BIGGE HAS BEEN ADVISED OR IS AWARE OF THE POSSIBILITY OF SUCH DAMAGES. IF, NOTWITHSTANDING ANY OTHER PROVISIONS OF THIS AGREEMENT, BIGGE IS FOUND TO BE LIABLE TO USER FOR ANY DAMAGE OR LOSS THAT ARISES OUT OF OR IS IN ANY WAY CONNECTED TO THIS DOCUMENT, BIGGE’S ENTIRE LIABILITY FOR DIRECT DAMAGES UNDER THIS AGREEMENT SHALL BE LIMITED TO FIFTY DOLLARS (\$50.00).

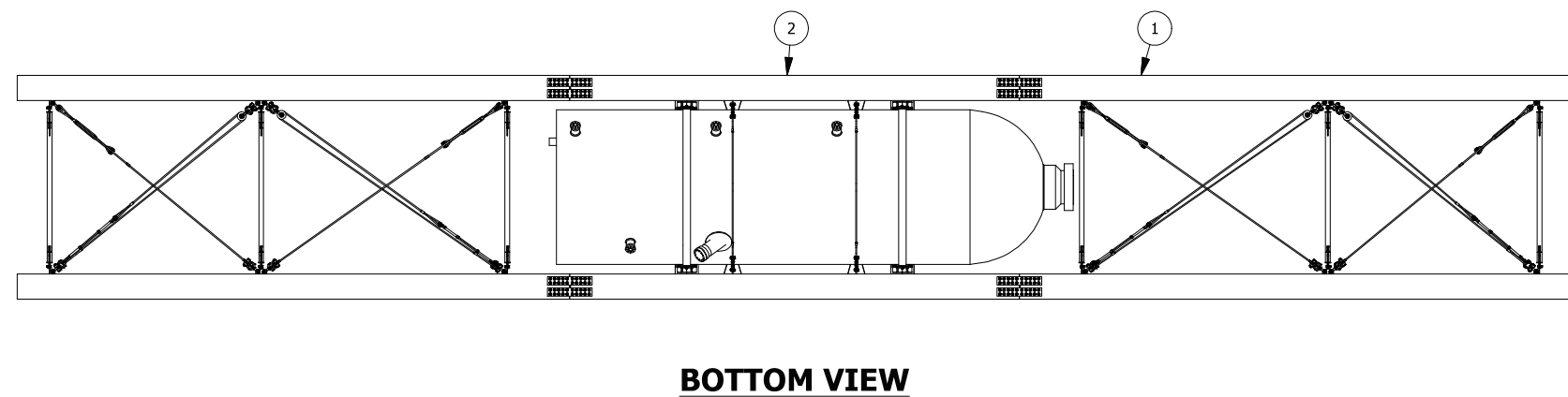
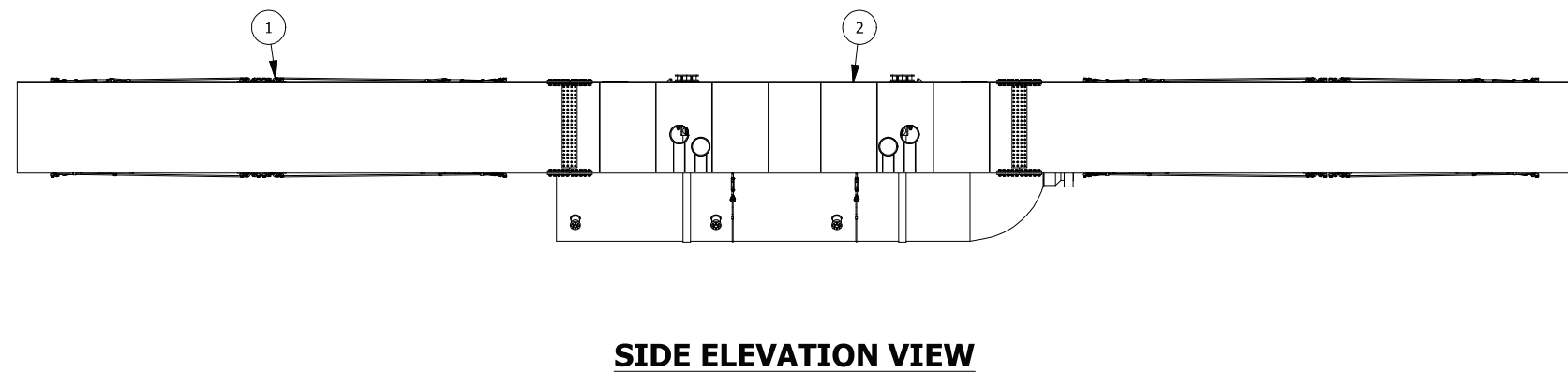
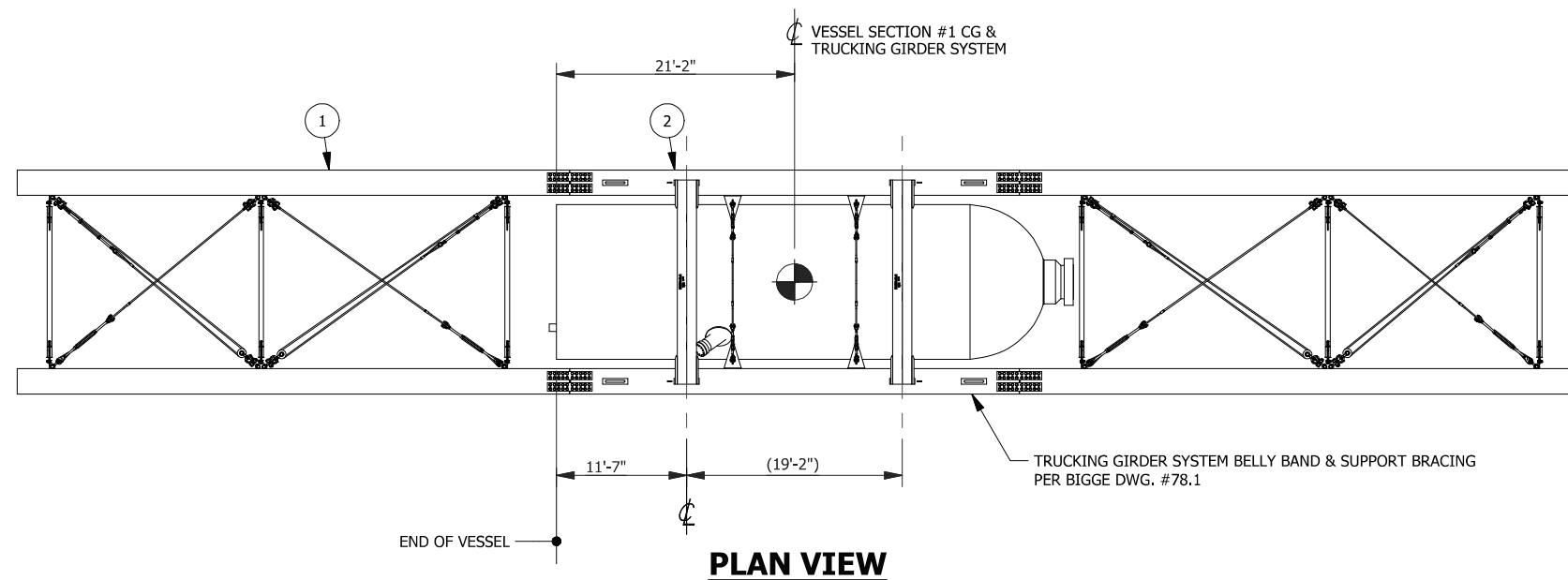


ISOMETRIC VIEW

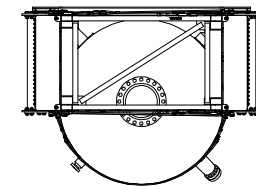
TRUCKING GIRDER GENERAL ARRANGEMENT - VESSEL SECTION #1 (ALTERNATE)


APPROX. ASSEMBLED WEIGHT: 749,748 LBS.±

1	ADDED THIS SHEET		9/17/2014	MWJ	9/17/2014	VLH	9/17/2014	VLH
NO.	REVISIONS	DATE	BY	DATE	BY	DATE	BY	
		DRAWN		CHECKED		APPROVED		
This drawing contains information proprietary to Bigge Crane and Rigging Co. It is submitted in confidence and is to be used solely for the purpose for which it is furnished and returned upon request. This drawing and such information is not to be reproduced, transmitted, disclosed or used in whole or in part without the written authorization of Bigge Crane and Rigging Co.								
				<i>10700 Bigge Ave., San Leandro, CA 94577</i> <i>www.BIGGE.com</i>				
				<i>Established 1916</i> <b>CRANE and RIGGING CO.</b>				
TRUCKING GIRDER GENERAL ARRANGEMENT ALTERNATE VESSEL SECTION #1 POSITIONING ISOMETRIC VIEW REACTOR VESSEL SECTIONS 1 & 2 TRANSPORT CALUMET REFINERY PROJECT								
SCALE: (U.N.O)		SIZE	PROJECT No.		DWG. No.		SHEET	REV.
NTS		B	09199		78.2		5 of 6	1



THIS DOCUMENT IS PROVIDED "AS IS, WHERE IS" AND NO REPRESENTATIONS OR WARRANTIES ARE MADE, EXPRESSED OR IMPLIED. RELIANCE ON THE DOCUMENT IS AT THE SOLE RISK OF THE USER. TO THE EXTENT NOT PROHIBITED BY LAW, UNDER NO CIRCUMSTANCES SHALL BIGGE BE LIABLE WITH RESPECT TO THIS DOCUMENT FOR SPECIAL, INDIRECT, INCIDENTAL, OR CONSEQUENTIAL DAMAGES, INCLUDING WITHOUT LIMITATION, DAMAGES RESULTING FROM ANY INACCURACIES OR FROM LOSS OF PROFITS, BUSINESS OR GOODWILL, ON ANY THEORY OF LIABILITY, WHETHER ARISING UNDER TORT (INCLUDING NEGLIGENCE), CONTRACT OR OTHERWISE, WHETHER OR NOT BIGGE HAS BEEN ADVISED OR IS AWARE OF THE POSSIBILITY OF SUCH DAMAGES. IF, NOTWITHSTANDING ANY OTHER PROVISIONS OF THIS AGREEMENT, BIGGE IS FOUND TO BE LIABLE TO USER FOR ANY DAMAGE OR LOSS THAT ARISES OUT OF OR IS IN ANY WAY CONNECTED TO THIS DOCUMENT, BIGGE'S ENTIRE LIABILITY FOR DIRECT DAMAGES UNDER THIS AGREEMENT SHALL BE LIMITED TO FIFTY DOLLARS (\$50.00).



1	ADDED THIS SHEET		9/17/2014	MWJ	9/17/2014	VLH	9/17/2014	VLH
NO.	REVISIONS		DATE	BY	DATE	BY	DATE	BY
			DRAWN		CHECKED		APPROVED	
<p>This drawing contains information proprietary to Bigge Crane and Rigging Co. It is submitted in confidence and is to be used solely for the purpose for which it is furnished and returned upon request. This drawing and such information is not to be reproduced, transmitted, disclosed or used in whole or in part without the written authorization of Bigge Crane and Rigging Co.</p> <p style="text-align: center;">  <span style="float: right;">10700 Bigge Ave., San Leandro, CA 94577 www.BIGGE.com</span> </p> <p style="text-align: right;"><i>Established 1916</i></p> <p style="text-align: center;"><b>CRANE and RIGGING CO.</b></p>								
<p>TRUCKING GIRDER GENERAL ARRANGEMENT</p> <p>ALTERNATE VESSEL SECTION #1 POSITIONING ORTHO VIEWS</p> <p>REACTOR VESSEL SECTIONS 1 &amp; 2 TRANSPORT</p> <p>CALUMET REFINERY PROJECT</p>								
SCALE: (U./N.O)		SIZE	PROJECT No.		DWG. No.		SHEET	REV.
1/16"=1'-0"		B	09199		78.2		6 of 6	1