

ISOMETRIC VIEW


THIS DOCUMENT IS PROVIDED "AS IS, WHERE IS" AND NO REPRESENTATIONS OR WARRANTIES ARE MADE, EXPRESSED OR IMPLIED. RELIANCE ON THE DOCUMENT IS AT THE SOLE RISK OF THE USER. TO THE EXTENT NOT PROHIBITED BY LAW, UNDER NO CIRCUMSTANCES SHALL BIGGE BE LIABLE WITH RESPECT TO THIS DOCUMENT FOR SPECIAL, INDIRECT, INCIDENTAL, OR CONSEQUENTIAL DAMAGES, INCLUDING WITHOUT LIMITATION, DAMAGES RESULTING FROM ANY INACCURACIES OR FROM LOSS OF PROFITS, BUSINESS OR GOODWILL, ON ANY THEORY OF LIABILITY, WHETHER ARISING UNDER TORT (INCLUDING NEGLIGENCE), CONTRACT OR OTHERWISE, WHETHER OR NOT BIGGE HAS BEEN ADVISED OR IS AWARE OF THE POSSIBILITY OF SUCH DAMAGES. IF, NOTWITHSTANDING ANY OTHER PROVISIONS OF THIS AGREEMENT, BIGGE IS FOUND TO BE LIABLE TO USER FOR ANY DAMAGE OR LOSS THAT ARISES OUT OF OR IS IN ANY WAY CONNECTED TO THIS DOCUMENT, BIGGE'S ENTIRE LIABILITY FOR DIRECT DAMAGES UNDER THIS AGREEMENT SHALL BE LIMITED TO FIFTY DOLLARS (\$50.00).

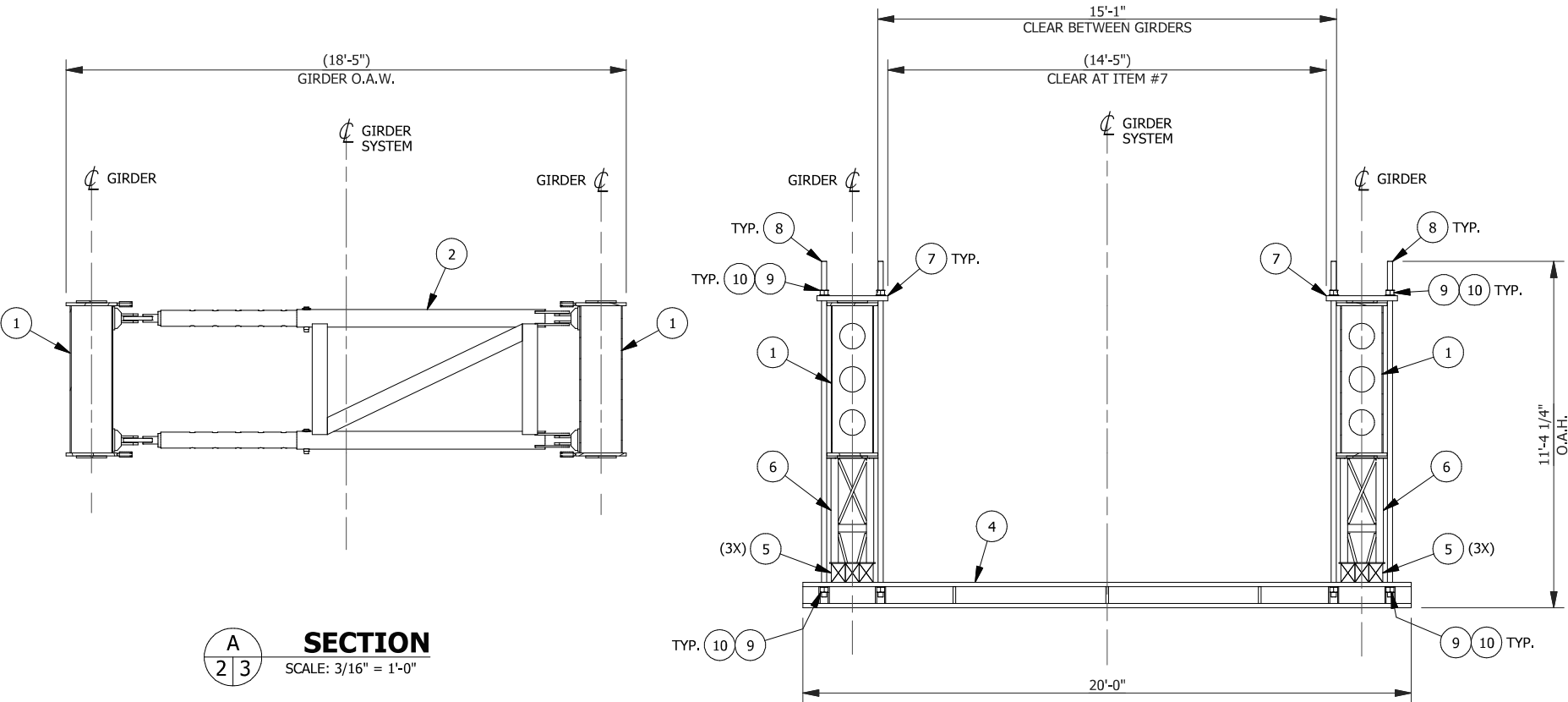
BOLSTERED TRANSPORT CONFIGURATION ASSEMBLY

APPROX. WEIGHT: 146514 LBS.±

PARTS LIST				
ITEM	QTY	PART No.	DESCRIPTION	WEIGHT EA (LBS)
1	2	TG1	ALMAS TRUCKING GIRDER	43474
2	2		ADJUSTABLE TRUCKING GIRDER GATE BRACE - TG1	1500
3	4		ADJUSTABLE TRANSPORT GIRDER BRACE - TG1	2143
4	2	TCB4	TRANSPORTATION CARRY BEAM	7700
5	12		TIMBER, 6" x 8" x 48"	46
6	4		CARRY BEAM SPACER	183
7	4		CARRY BEAM HANGER PLATE	437
8	16		CARRY BEAM HANGER ROD	118
9	32		HEAVY HEX NUT, 2"-4.5 UNC, ASTM A563 - GRADE C	3
10	32		WASHER, 2", SAE THRU HARDENED, ZINC COATED	0
11	4		ADJUSTABLE TRUCKING GIRDER DIAGONAL BRACE - TG1	270
12	2	TRB-2	ROCKER BEAM	6907
13	2		GOLDHOFER 200mT - BOLSTER ASSEMBLY	6290
14	16		HEX HEAD CAP SCREW, 1 1/2"-6 UNC x 6", SAE J429 GRADE 5, ZINC COATED	4
15	32		WASHER, 1 1/2", SAE THRU HARDENED, ZINC COATED	0
16	16		HEX NUT, 1 1/2"-6 UNC, SAE J995 GRADE 5, ZINC COATED	1

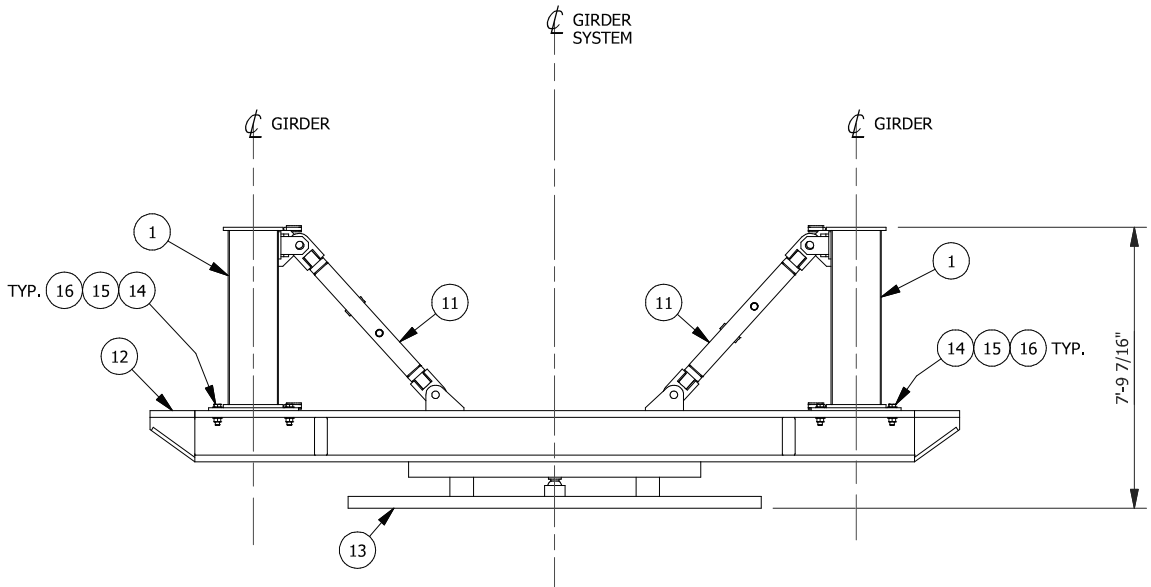
- NOTES:
1. GIRDERS HAVE APPROXIMATELY 7" OF POSITIVE FABRICATED CAMBER RELATIVE TO LENGTH SHOWN. GRAPHIC IMAGES AND DIMENSIONS SHOWN ON DRAWING DO NOT ACCOUNT FOR THIS CONDITION. AMOUNT OF CAMBER CONSUMED BY CARGO WILL DEPEND ON CARGO WEIGHT AND SUPPORT GEOMETRY.

0	ISSUED FOR INFORMATION		4/11/2018	DER	5/24/2018	VLH	5/24/2018	VLH
NO.	REVISIONS		DATE	BY	DATE	BY	DATE	BY
			DRAWN		CHECKED		APPROVED	
This drawing contains information proprietary to Bigge Crane and Rigging Co. It is submitted in confidence and is to be used solely for the purpose for which it is furnished and returned upon request. This drawing and such information is not to be reproduced, transmitted, disclosed or used in whole or in part without the written authorization of Bigge Crane and Rigging Co.								
					10700 Bigge Ave., San Leandro, CA 94577 www.BIGGE.com			
					Established 1916 CRANE and RIGGING CO.			
BOLSTERED TRANSPORT CONFIGURATION ASSEMBLY ISOMETRIC VIEW TG-1, ALMAS TRUCKING GIRDER								
SCALE: (U.N.O)	SIZE	PROJECT No.	DWG. No.			SHEET		REV.
N.T.S.	B		TG-01A-01			1 of 3		0




A
2 | 3
SECTION
SCALE: 3/16" = 1'-0"

B
2 | 3
SECTION
SCALE: 3/16" = 1'-0"



C
2 | 3
SECTION
SCALE: 3/16" = 1'-0"

THIS DOCUMENT IS PROVIDED "AS IS, WHERE IS" AND NO REPRESENTATIONS OR WARRANTIES ARE MADE, EXPRESSED OR IMPLIED. RELIANCE ON THE DOCUMENT IS AT THE SOLE RISK OF THE USER. TO THE EXTENT NOT PROHIBITED BY LAW, UNDER NO CIRCUMSTANCES SHALL BIGGE BE LIABLE WITH RESPECT TO THIS DOCUMENT FOR SPECIAL, INDIRECT, INCIDENTAL, OR CONSEQUENTIAL DAMAGES, INCLUDING WITHOUT LIMITATION, DAMAGES RESULTING FROM ANY INACCURACIES OR FROM LOSS OF PROFITS, BUSINESS OR GOODWILL, ON ANY THEORY OF LIABILITY, WHETHER ARISING UNDER TORT (INCLUDING NEGLIGENCE), CONTRACT OR OTHERWISE, WHETHER OR NOT BIGGE HAS BEEN ADVISED OR IS AWARE OF THE POSSIBILITY OF SUCH DAMAGES. IF, NOTWITHSTANDING ANY OTHER PROVISIONS OF THIS AGREEMENT, BIGGE IS FOUND TO BE LIABLE TO USER FOR ANY DAMAGE OR LOSS THAT ARISES OUT OF OR IS IN ANY WAY CONNECTED TO THIS DOCUMENT, BIGGE'S ENTIRE LIABILITY FOR DIRECT DAMAGES UNDER THIS AGREEMENT SHALL BE LIMITED TO FIFTY DOLLARS (\$50.00).

0	ISSUED FOR INFORMATION		4/11/2018	DER	5/24/2018	VLH	5/24/2018	VLH
NO.	REVISIONS		DATE	BY	DATE	BY	DATE	BY
			DRAWN		CHECKED		APPROVED	
	This drawing contains information proprietary to Bigge Crane and Rigging Co. It is submitted in confidence and is to be used solely for the purpose for which it is furnished and returned upon request. This drawing and such information is not to be reproduced, transmitted, disclosed or used in whole or in part without the written authorization of Bigge Crane and Rigging Co.							
					10700 Bigge Ave., San Leandro, CA 94577 www.BIGGE.com			
					Established 1916			
					CRANE and RIGGING CO.			
BOLSTERED TRANSPORT CONFIGURATION ASSEMBLY SECTION VIEWS TG-1, ALMAS TRUCKING GIRDER								
SCALE: (U.N.O)		SIZE	PROJECT No.		DWG. No.		SHEET	REV.
AS NOTED		B			TG-01A-01		3 of 3	0