



**SALES MANAGERS & AUCTIONEERS**

# AUCTION CATALOG

**ATKINSON (SALEM), NEW HAMPSHIRE - FRIDAY, OCTOBER 1<sup>ST</sup> AT 9:30 AM**



**\*\*ONSITE-LIVE AUCTION\*\***

**3 AUCTIONS IN 1 DAY - JOB COMPLETION**

**AULSON CO. LLC**



**AND 2 RETIREMENT AUCTIONS - COMPLETE LIQUIDATION**

**S&W PAVING & DECOLA PAVING**

**CONSTRUCTION, PAVING AND SNOW EQUIPMENT, SNOW RELATED EQUIPMENT,  
PLOWS, SANDERS, SALTERS, TRUCKS, TRAILERS, SUPPORT EQUIPMENT**

**ADDRESS:** 24 Industrial Way, Atkinson, NH 03811.

**NOTE:** Due to everybody getting older, the time has come to sell all or partial companies in order to enjoy life a little, including the retirements of S&W Paving, DeCola Paving and a major job completion of Aulson Company.

**SALE SITE PHONE:** (315) 633-2944.

**NH LICENSE:** 6100 Jack Lyon.

**FOLLOW US:**  

**Warranties Available On Late Model Equipment from:**



**CONTACT:** Christine Julka

**DIRECT:** 315-256-0498

**OFFICE:** 866-662-0995

**www.adiagency.com**

**FINANCING AVAILABLE FOR PRE-APPROVED**

**PURCHASERS:** You must have prior written approval!

**FINANCING:** Please refer to the inside back cover for financing information.

**TERMS & CONDITIONS:** "Cash or Company Check" accompanied by current "Bank Letter of Guarantee", made payable to Alex Lyon & Son. Everything Sells "AS IS, "WHERE IS." *The following charges will apply on all purchases:* (1.) For each unit \$35,001.00 and above, a 5.99% administration fee will be assessed when paying with cash or good check. (The standard fee of 8.99% will be assessed when paying with credit card); and (2.) For each unit \$1,001- \$35,000, a 10% administration fee will be assessed when paying with cash or good check, and a 13% fee will be assessed when paying with credit card. (3.)

For each unit \$0- \$1,000, a 12.5% administration fee will be assessed when paying with cash or good check, and a 15.5% fee will be assessed when paying with credit card. **\*\*Please NOTE: An additional fee may be assessed when bidding online\*\***

**SALES TAX EXEMPTIONS:** Buyers with a VALID exemption certificate are not required to pay sales tax for equipment and miscellaneous, but MUST present a copy of their certificate at time of registration at EACH SALE.

**EXPORTERS:** If you take possession of your purchase in the United States, you must pay sales tax. You must provide the following in order not to be charged:

**Bill of Lading-** All export purchases must be removed by a trucking company. The trucking company will provide a Bill of Lading with the purchases listed.

**NOTE:** No items will be released without this document or you may pay tax and be reimbursed once the Bill of Lading or a Dock Receipt is received.

**MOTOR VEHICLES AND TRAILER EXEMPTIONS:** Specific for each state. Please call office for exemption details.

**RESPONSIBLE BIDDING:** The Bidder is responsible for knowing which item he/she is bidding on. If he/she is unsure, he/she should inquire or not bid. When you become the winning bidder at auction you have effected a contract and will be expected to pay for items in which you were evidenced to be the successful bidder. Auctioneer will not honor "mistakes".

**For BID ONLINE technical assistance, call**  
**Proxibid: (855) 636-6461 or Nextlot: (919) 361-1111.**

**ALEX LYON & SON SALES MANAGERS & AUCTIONEERS, INC.**

**7697 ROUTE 31, PO BOX 610, BRIDGEPORT, NY 13030 315-633-2944 FAX: 315-633-8010 LYONAUCTION.COM**

# ALEX LYON & SON AUCTION COMPANY

## TERMS & CONDITIONS

Cash or Company check accompanied by current irrevocable bank letter of credit must be payable immediately to **Alex Lyon and Son, Inc.**

Purchases must be removed from the sale site within 7 days of the sale date. Purchased may not be removed until payment in full has been received. Loading will be on Monday through Saturday from 8:00 AM to 4:00 PM, and if applicable, Sundays from 8:00 AM to 10:30 AM and shall occur in the designated loading area. Any equipment remaining on the grounds after 7 days will be subject to storage fees or removed at the buyers expense. Alex Lyon & Son (1) will not load or unload self-propelled equipment; (2) is not responsible for transportation of equipment to and from the auction site; (3) is not responsible for securing or unrecruiting equipment for the purposes of shipment or unloading; and (4) may assist, in its own discretion, with loading stationary equipment but only to the extent of getting the equipment physically onto a trailer

Purchases become the responsibility of and shall be and remain at the risk of the Purchaser immediately upon acceptance of his bid. It shall be the responsibility of the Purchaser to insure his purchases immediately.

No sale shall be invalidated by reason of any defect or inaccuracy in any of the lots by reason of their being incorrectly described in this listing or elsewhere and no liability shall be borne by the Auctioneers in respect of any such fault or errors. These listings have been prepared only as a guide based on information from sources generally believed to be reliable and from the Consignor but the accuracy thereof cannot be guaranteed or warranted by the Auctioneers. Bidder acknowledges that it is his responsibility to inspect all equipment and to make his own inquiries.

There shall be no guarantees or warranties, expressed or implied statutory or otherwise of any nature whatsoever. Each and every lot will be sold "as is" "where is". Specifically, but not to restrict the generality of the foregoing, the Auctioneers make no representation or warranty on any of the lots which are the subject of the auction.

Since the property sold is second-hand property, seller makes no warranty of any kind and sells the goods on an "as-is" basis, further, seller makes no warranty of any kind whatever, expressed or implied: and all implied warranties of merchantability and fitness for a particular purpose are hereby disclaimed by the seller.

All necessary documents will be mailed within 14 business days of the payment, or as soon as practical. Availability of these documents is subject to provision of the same by the Consignor.

Every person at the Auction site before, during and after the auction sale shall be deemed to be there at his own risk with notice of the condition of the premises, the activities on the premises and the conduct of third parties and the Bidder shall so advise his agents and employees. Alex Lyon & Son will not be responsible for any injuries sustained by you, our transportation companies or any other person there on your behalf.

**THIS LISTING IS ONLY A "GUIDE" AND MAY NOT BE ACCURATE IN ANY WAY. PLEASE INSPECT THE EQUIPMENT PRIOR TO BIDDING. ALL SALES ARE FINAL.**

Registered bidders hereby agree that all registration information may be shared with SmartEquip for the purposes of future service and maintenance assistance.

If a Purchaser fails to pay for any lot(s), Purchaser agrees that Alex Lyon & Son may, in its discretion: (1) seek specific performance from Purchaser; or (2) resell the lot(s) and recover any and all damages resulting from Purchaser's breach. If Alex Lyon & Son is required to take either of the actions set forth in this paragraph, Purchaser agrees that Alex Lyon & Son shall be entitled to recover its reasonable and necessary attorneys' fees from Purchaser. Any disputes between Alex Lyon & Son and Purchaser shall be governed by New York law.

NOTE: All bidders are bound by their signature on the Bidder's Registration Agreement. Please read the Terms printed on the registration card and on the paragraphs above. The Terms and Conditions are also available at [www.lyonauction.com/terms.html](http://www.lyonauction.com/terms.html).

**TAX EXEMPT ENTITIES MUST HAVE THEIR EXEMPTION # AND STATE FORM  
AT THE TIME OF SALE OR THEY WILL BE CHARGED SALES TAX.**

**ANY INDIVIDUAL FOUND TAMPERING WITH MACHINES IN THIS AUCTION  
WILL BE PROSECUTED TO THE FULLEST EXTENT OF THE LAW!**

## EVERY ITEM SELLS AS IS WHERE IS

THIS LISTING IS SUBJECT TO ALEX LYON & SON'S TERMS AND CONDITIONS, INCLUDING WITHOUT LIMITATION, THIS IS ONLY A "GUIDE" AND MAY NOT BE ACCURATE, THAT ALL SALES ARE FINAL AND THAT BUYER IS RESPONSIBLE FOR INSPECTION OF ALL EQUIPMENT PRIOR TO BIDDING. ALEX LYON & SON DOES NOT OFFER SHIPPING ON THIS LOT AND SUCH SHIPPING IS THE SOLE RESPONSIBILITY OF BUYER. THANK YOU FOR YOUR BUSINESS.

93	(2) ALUMINUM TOOL BOX TRUCK PARTS & ACCESSORIES	105	NEW MUSTANG CV3500 CONCRETE VIBRATOR NEW SUPPORT EQUIPMENT	121	NEW 2IN. X 50FT. DISCHARGE WATER HOSE NEW SUPPORT EQUIPMENT
93A	OIL PUMPS	106	NEW HUSKIE 11218SDS HAMMER DRILLS NEW SUPPORT EQUIPMENT	122	NEW 2IN. X 50FT. DISCHARGE WATER HOSE NEW SUPPORT EQUIPMENT
93B	HONDA 3000 WATT GENERATOR	107	NEW AUTO DARKENING WELDING HELMET NEW SUPPORT EQUIPMENT	123	NEW 25 GAL DIESEL FUEL CADDY W/12V PUMP NEW SUPPORT EQUIPMENT
93C	MINUTE MOUNT PLOW ACCESORY	108	NEW AUTO DARKENING WELDING HELMET NEW SUPPORT EQUIPMENT	124	NEW 12V DIESEL FUEL PUMP W/ FLOW METER NEW SUPPORT EQUIPMENT
94	NEW SET OF (24) KEYS SUPPORT EQUIPMENT	109	NEW 20FT. GRADE 70 TRANSPORT CHAIN NEW SUPPORT EQUIPMENT	125	NEW 12V DIESEL FUEL PUMP NEW SUPPORT EQUIPMENT
95	NEW SET OF (24) KEYS SUPPORT EQUIPMENT	110	NEW 20FT. GRADE 70 TRANSPORT CHAIN NEW SUPPORT EQUIPMENT	126	NEW 12V DIESEL FUEL PUMP NEW SUPPORT EQUIPMENT
96	NEW SET OF (24) KEYS SUPPORT EQUIPMENT	111	NEW 20FT. GRADE 70 TRANSPORT CHAIN NEW SUPPORT EQUIPMENT	127	NEW 6PK. 14IN. ABRASIVE BLADES NEW SUPPORT EQUIPMENT
97	NEW SET OF (24) KEYS SUPPORT EQUIPMENT	112	NEW 20FT. GRADE 70 TRANSPORT CHAIN NEW SUPPORT EQUIPMENT	128	NEW 6PK. 14IN. ABRASIVE BLADES NEW SUPPORT EQUIPMENT
98	NEW SET OF (24) KEYS SUPPORT EQUIPMENT	113	NEW 20FT. GRADE 70 TRANSPORT CHAIN NEW SUPPORT EQUIPMENT	136	NEW MUSTANG LF88 PLATE COMPACTOR NEW SUPPORT EQUIPMENT
99	12FT. STEEL FLATBED BODY equipped with headache rack, auxiliary fuel tank, wood deck. BOS ONLY	114	NEW RATCHET LOAD BINDERS NEW SUPPORT EQUIPMENT	137	NEW 3 PC. 14IN. PREMIUM DIAMOND BLADES NEW SUPPORT EQUIPMENT
99A	IR INPACT WRENCH	115	NEW RATCHET LOAD BINDERS NEW SUPPORT EQUIPMENT	138	NEW 3 PC. 14IN. PREMIUM DIAMOND BLADES NEW SUPPORT EQUIPMENT
99B	SHOP LIGHT	116	NEW 3 PC. 14IN. PREMIUM DIAMOND BLADES NEW SUPPORT EQUIPMENT	139	NEW 3 PC. 14IN. PREMIUM DIAMOND BLADES NEW SUPPORT EQUIPMENT
99C	SAND BLASTER	117	NEW 3 PC. 14IN. PREMIUM DIAMOND BLADES NEW SUPPORT EQUIPMENT	140	NEW 25FT., 800AMP EXTRA HD BOOSTER CABLE NEW SUPPORT EQUIPMENT
100	MASTER BLP375A PROPANE HEATER	118	NEW 3 PC. 14IN. PREMIUM DIAMOND BLADES NEW SUPPORT EQUIPMENT	141	NEW 25FT., 800AMP EXTRA HD BOOSTER CABLE NEW SUPPORT EQUIPMENT
100A	LB WHITE TRADESMEN 400 PROPANE HEATER	119	NEW MUSTANG MP4800 2IN. SUB PUMP NEW SUPPORT EQUIPMENT	142	NEW 25FT., 800AMP EXTRA HD BOOSTER CABLE NEW SUPPORT EQUIPMENT
100C	I IN SUB PUMP	120	NEW MUSTANG MP4800 2IN. SUB PUMP NEW SUPPORT EQUIPMENT	143	NEW MUSTANG MP4800 2IN. SUB PUMP NEW SUPPORT EQUIPMENT
101	NEW 25FT., 800AMP EXTRA HD BOOSTER CABLE NEW SUPPORT EQUIPMENT				
102	NEW 25FT., 800AMP EXTRA HD BOOSTER CABLE NEW SUPPORT EQUIPMENT				
103	NEW 25FT., 800AMP EXTRA HD BOOSTER CABLE NEW SUPPORT EQUIPMENT				
104	NEW MUSTANG CV3500 CONCRETE VIBRATOR NEW SUPPORT EQUIPMENT				

**AMERICA'S AUCTION COMPANY**

## EVERY ITEM SELLS AS IS WHERE IS

THIS LISTING IS SUBJECT TO ALEX LYON & SON'S TERMS AND CONDITIONS, INCLUDING WITHOUT LIMITATION, THIS IS ONLY A "GUIDE" AND MAY NOT BE ACCURATE, THAT ALL SALES ARE FINAL AND THAT BUYER IS RESPONSIBLE FOR INSPECTION OF ALL EQUIPMENT PRIOR TO BIDDING. ALEX LYON & SON DOES NOT OFFER SHIPPING ON THIS LOT AND SUCH SHIPPING IS THE SOLE RESPONSIBILITY OF BUYER. THANK YOU FOR YOUR BUSINESS.

144	NEW MUSTANG MP4800 2IN. SUB PUMP NEW SUPPORT EQUIPMENT	163	NEW 25FT., 800AMP EXTRA HD BOOSTER CABLE NEW SUPPORT EQUIPMENT	177	SEARS 10IN. RADIAL TABLE SAW SUPPORT EQUIPMENT electric powered, 8-drawers.
144A	NEW MUSTANG MP4800 2IN. SUB PUMP NEW SUPPORT EQUIPMENT	164	NEW 25FT., 800AMP EXTRA HD BOOSTER CABLE NEW SUPPORT EQUIPMENT	178	(4) METAL SPRING RAKES SUPPORT EQUIPMENT
145	NEW 2IN. X 50FT. DISCHARGE WATER HOSE NEW SUPPORT EQUIPMENT	165	NEW EASY KLEEN MAGNUM GOLD PRESSURE WASHER powered by gas engine, equipped with 4000PSI, 12Volt, 15hp, Hot Water, totally self contained.	179	MISC JACK HAMMER BITS SUPPORT EQUIPMENT
146	NEW 2IN. X 50FT. DISCHARGE WATER HOSE NEW SUPPORT EQUIPMENT	166	NEW EASY KLEEN MAGNUM GOLD PRESSURE WASHER powered by gas engine, equipped with 4000PSI, 12Volt, 15hp, Hot Water, totally self contained.	179A	HAMMER
147	NEW AUTO DARKENING WELDING HELMET NEW SUPPORT EQUIPMENT	167	NEW EASY KLEEN MAGNUM GOLD PRESSURE WASHER powered by gas engine, equipped with 4000PSI, 12Volt, 15hp, Hot Water, totally self contained.	179B	JACK HAMMER
155	NEW MUSTANG LF88 PLATE COMPACTOR NEW SUPPORT EQUIPMENT	168	NEW AUTO DARKENING WELDING HELMET NEW SUPPORT EQUIPMENT	179C	HAMMER
156	NEW MUSTANG LF88 PLATE COMPACTOR NEW SUPPORT EQUIPMENT	169	NEW AUTO DARKENING WELDING HELMET NEW SUPPORT EQUIPMENT	186	FRIDGE AC UNIT TRAILER PARTS & ACCESSORIES
157	NEW EASY KLEEN MAGNUM GOLD PRESSURE WASHER powered by gas engine, equipped with 4000PSI, 12Volt, 15hp, Hot Water, totally self contained.	170	EDCO TLR 7-11H PAVEMENT GRINDER SUPPORT EQUIPMENT	196	80 GALLON L SHAPE DIAMOND PLATE FUEL TANK FUEL TANK
158	NEW EASY KLEEN MAGNUM GOLD PRESSURE WASHER powered by gas engine, equipped with 4000PSI, 12Volt, 15hp, Hot Water, totally self contained.	171	EDCO TLR 7-11H PAVEMENT GRINDER SUPPORT EQUIPMENT	197	GOLDEN MOUNT 20X40 STORAGE BUILDING
159	NEW SIMPSON PS60841 3300PSI PRESSURE WASHER powered by Kohler gas engine, equipped with 2.5 GPM.	172	KING FORCE KRM160L JUMPING JACK SUPPORT EQUIPMENT	198	GOLDEN MOUNT 20X20 STORAGE BUILDING
160	NEW BLACK & DECKER BDX2700 2700PSI PRESSURE WASHER powered by gas engine, equipped with 2.3 GPM.	173	STOMPER JUMPING JACK SUPPORT EQUIPMENT	199	EXMARK WALK BEHIND MOWER
161	NEW 3 PC. 14IN. PREMIUM DIAMOND BLADES NEW SUPPORT EQUIPMENT	174	GANG BOX SUPPORT EQUIPMENT	199A	HEAT WAGON
162	NEW 3 PC. 14IN. PREMIUM DIAMOND BLADES NEW SUPPORT EQUIPMENT	175	MISC ASPHALT TOOLS SUPPORT EQUIPMENT	200	OLYMPIAN GENERATOR SN-D01108
		176	TITAN COMMERCIAL GRADE PRESSURE WASHER SUPPORT EQUIPMENT	201	EXCAVAC HT-130D LI'L GROUND HOG VACUUM SYSTEM SN-304805 powered by Deutz diesel engine, equipped with hydraulic dumping.
				202	CONDUX HYDRAULIC ASSIST WHEEL UTILITY EQUIPMENT SN:98909011 18hp engine, self contained, trailer mounted, 893 hours.BOS ONLY
				203	PORTA HYDRAULIC ASSIST WHEEL UTILITY EQUIPMENT SN:CN00033 18hp engine, self contained, trailer mounted, 469 hours.BOS ONLY
				204	ATLAS COPCO 185CFM AIR COMPRESSORS N-602179 powered by John Deere diesel engine, equipped with 185CFM, trailer mounted.BOS ONLY



## EVERY ITEM SELLS AS IS WHERE IS

THIS LISTING IS SUBJECT TO ALEX LYON & SON'S TERMS AND CONDITIONS, INCLUDING WITHOUT LIMITATION, THIS IS ONLY A "GUIDE" AND MAY NOT BE ACCURATE, THAT ALL SALES ARE FINAL AND THAT BUYER IS RESPONSIBLE FOR INSPECTION OF ALL EQUIPMENT PRIOR TO BIDDING. ALEX LYON & SON DOES NOT OFFER SHIPPING ON THIS LOT AND SUCH SHIPPING IS THE SOLE RESPONSIBILITY OF BUYER. THANK YOU FOR YOUR BUSINESS.

- |   |  |   |
|---|--|---|
| <p>_____ 205 ATLAS COPCO XAS185 AIR COMPRESSOR SN:NO1111 powered by diesel engine, equipped with 185CFM, trailer mounted, 1,569 hours.BOS ONLY</p> <p>_____ 206 WANCO MESSAGE BOARD ARROW/MESSAGE BOARD solar powered, trailer mounted.BOS ONLY</p> <p>_____ 207 2006 POUND TAGALONG TRAILER VN:N/A equipped with 7 ton capacity, ramps, 225/75-15 tires, tandem axle. Bill Of Sale Only., NO TITLE</p> <p>_____ 208 1980 9 TON TAGALONG TRAILER VN:28656 equipped with 9 ton capacity, 16ft. Deck, ramps, electric brakes, 16in. Tires, tandem axle.</p> <p>_____ 209 2011 FORD F250 PICKUP TRUCK VIN C82619 4X4, powered by gas engine, equipped with automatic transmission, power steering, a/c, power windows &amp; locks, tow package. TITLE DELAY</p> <p>_____ 210 2006 FORD F350 DUMP TRUCK VIN B97995</p> <p>_____ 210A 2005 FORD F450 FLATBED DUMP TRUCK VN:EA32800 4x4, powered by Power Stroke diesel engine, equipped with power steering, flatbed dump, lift gate, pintle hitch, 9ft. Fisher plow, 19.5 rubber, dual wheel single axle. 12K in repairs.</p> <p>_____ 211 HIGHWAY SANDER SNOW EQUIPMENT</p> <p>_____ 212 2016 FORD F350XL FLATBED TRUCK VN:1FTRF3B62GEB37236 4x4, powered by 6.2 liter gas engine, equipped with automatic transmission, power steering, 8.5ft. steel body, 245/75R17 tires, 87,250 miles.</p> | <p>_____ 213 2012 FORD F350XL STAKE TRUCK VN:1FTRF3BT7CEC84698 4x4, powered by Powerstroke V8 turbo diesel engine, equipped with automatic transmission, power steering, 8.5ft. steel body, Fisher plow controls, Downeaster 8ft. stainless steel sander, LT245/75R17 tires DNR.</p> <p>_____ 214 2009 FORD F550XL DUMP TRUCK VN:EA31741 4x4, powered by Power Stroke diesel engine, equipped with automatic transmission, power steering, a/c, steel dump body, central hydraulics, sander, wing and front plow setup, dual wheel single axle.</p> <p>_____ 215 2005 FORD F550XL DUMP TRUCK VN 72099 powered by Power Stroke diesel engine, equipped with automatic transmission, power steering, a/c, dump body, plow wing, sander setup, 225/70R19.5 tires, dual wheel single axle.</p> <p>_____ 216 2015 BOBCAT 3650 UTILITY VEHICLE VIN-0290 4x4, powered by diesel engine, equipped with EROPS, air, heat, hydrostatic transmission, power steering, auxiliary hydraulics, loader attachment.BOS ONLY</p> <p>_____ 217 2016 VENTRAC 3400Y SNOW UTILITY TRACTOR SN:1830 powered by Kubota diesel engine, equipped with EROPS, air, heat, 600 hours. Drop Seeder, KD Power Angle Blade, Hydraulic Angle Broom Sells Separately.BOS ONLY</p> <p>_____ 218 VENTRE SWEEPER SNOW UTILITY TRACTOR ATTACHMENT</p> <p>_____ 219 VENTRE PLOW ANGLE SNOW UTILITY TRACTOR ATTACHMENT</p> | <p>_____ 220 2011 JOHN DEERE 1545 SNOW UTILITY TRACTOR SN:CBT090185 powered by diesel engine, equipped with EROPS, air, heat, out front mower, Snow blower Sells Separately.BOS ONLY</p> <p>_____ 221 JOHN DEERE BLOWER SNOW UTILITY TRACTOR ATTACHMENT</p> <p>_____ 222 JOHN DEERE MOWER DECK SNOW UTILITY TRACTOR ATTACHMENT</p> <p>_____ 223 KUBOTA SNOW BLOWER SNOW EQUIPMENT</p> <p>_____ 224 2019 MAHINDRA MAX26LH SNOW UTILITY TRACTOR SN:90730765 powered by diesel engine, 26hp, equipped with EROPS, air, heat, front loader w/ GP bucket. Snow blower and plow Sell Separately.</p> <p>_____ 225 MAHINDRA BLOWER SNOW UTILITY TRACTOR ATTACHMENT</p> <p>_____ 226 TERRAMITE T5B TRACTOR LOADER BACKHOE SN:581039 powered by Honda gas engine, equipped with OROPS, hydrostatic, 1/2 yard GP front bucket, rear digging bucket.</p> <p>_____ 227 ALTEC DB35 MINI TRACKED CRANE SN:EK0092 powered by Kubota diesel engine, equipped with pin on bucket, pole grabbers, 18in. Auger, 8ft. JIB, 1,310 hours.</p> <p>_____ 228 2015 TAKEUCHI TL10 RUBBER TRACKED SKID STEER SN-1198 powered by Kubota V3800CR diesel engine, 92hp, equipped with rollcage, 2-speed, high flow auxiliary hydraulics, mechanical quick coupler, rubber tracks, 80in. GP bucket.</p> |
|---|--|---|

## EVERY ITEM SELLS AS IS WHERE IS

THIS LISTING IS SUBJECT TO ALEX LYON & SON'S TERMS AND CONDITIONS, INCLUDING WITHOUT LIMITATION, THIS IS ONLY A "GUIDE" AND MAY NOT BE ACCURATE, THAT ALL SALES ARE FINAL AND THAT BUYER IS RESPONSIBLE FOR INSPECTION OF ALL EQUIPMENT PRIOR TO BIDDING. ALEX LYON & SON DOES NOT OFFER SHIPPING ON THIS LOT AND SUCH SHIPPING IS THE SOLE RESPONSIBILITY OF BUYER. THANK YOU FOR YOUR BUSINESS.

- |   |  |  |
|---|--|--|
| <p>_____ 230 CASE SV300 SKID STEER SN-405774 powered by diesel engine, equipped with EROPS, air, heat, ride control, high flow auxiliary hydraulics, hydraulic quick coupler, high lift, 82in. GP bucket.</p> <p>_____ 232 2012 JOHN DEERE 320D SKID STEER SN:238253 powered by John Deere diesel engine, equipped with rollcage, auxiliary hydraulics, mechanical quick coupler, GP bucket, 2,996 hours.</p> <p>_____ 233 2013 JOHN DEERE 320D SKID STEER SN:247950 powered by John Deere diesel engine, equipped with rollcage, auxiliary hydraulics, mechanical quick coupler, GP bucket, 559 hours.</p> <p>_____ 235 VOLVO 90B SKID STEER SN:7029400 powered by diesel engine, equipped with rollcage, high flow auxiliary hydraulics, mechanical quick coupler, GP bucket, 2,105 hours.</p> <p>_____ 236 BOBCAT 863F SKID STEER SN:514430612 powered by Kubota diesel engine, equipped with rollcage, auxiliary hydraulics, mechanical quick coupler, GP bucket.</p> <p>_____ 237 BOBCAT 463 SKID STEER SN:913965 powered by Kubota diesel engine, equipped with rollcage, auxiliary hydraulics, mechanical quick coupler, Grapple bucket.</p> <p>_____ 239 2009 GMC 2500HD PICKUP TRUCK VN:E134176 4x4, powered by gas engine, equipped with automatic transmission, power steering, power windows &amp; locks, a/c, extended cab, 6ft. Bed, tow package, bedliner, headache rack, tool box, plow package.</p> <p>_____ 240 2013 NEW HOLLAND HH305 HYDRAULIC HAMMER SKID STEER ATTACHMENT</p> | <p>_____ 241 SWEEPER SKID STEER ATTACHMENT</p> <p>_____ 242 V-PLOW SKID STEER ATTACHMENT</p> <p>_____ 243 8FT. GRADING BOOM SKID STEER ATTACHMENT for clearing under guard rails.</p> <p>_____ 245 2015 PALADIN LAF3566 HARLEY RAKE SKID STEER ATTACHMENT standard flow.</p> <p>_____ 246 BRADCO 509 BACKHOE SKID STEER ATTACHMENT SN:330015</p> <p>_____ 247 2008 CHEVY 2500HD FLATBED TRUCK VN:158824 4x4, powered by Duramax 6.6L diesel engine, equipped with Allison automatic transmission, power steering, crew cab, loaded, flatbed body, fast fuel system, MM2 plow, tow package.</p> <p>_____ 248 2008 FORD F350 FLATBED TRUCK VN:N/A powered by gas engine, equipped with EROPS, air, heat, flatbed body, stainless steel sander, Western plow, dual wheel single axle.</p> <p>_____ 249 2008 FORD F350 FLATBED TRUCK VN:N/A powered by gas engine, equipped with EROPS, air, heat, flatbed body, stainless steel sander, Western plow, dual wheel single axle.</p> <p>_____ 253 NEW JBX 4000 48IN. FORKS SKID STEER ATTACHMENT</p> <p>_____ 254 NEW JBX 4000 48IN. FORKS SKID STEER ATTACHMENT</p> <p>_____ 255 78IN. ROCK BUCKET SKID STEER ATTACHMENT</p> <p>_____ 257 2008 FORD F350 SERVICE TRUCK VN:C71665 powered by Power Stroke diesel engine, equipped with automatic transmission, power steering, 8ft. Service body, tow package.</p> | <p>_____ 260 NEW DURAMAG 8FT. SERVICE BODY aluminum, heavy slam latch tailgate w/ stainless steel lock rods, swing doors w/ nitrogen props on vertical compartments, fully welded construction, black polymer rivetless door handles, LED lights, fits single rear wheel, black.</p> <p>_____ 261 NEW DURAMAG 8FT. SERVICE BODY aluminum, heavy slam latch tailgate w/ stainless steel lock rods, swing doors w/ nitrogen props on vertical compartments, fully welded construction, black polymer rivetless door handles, LED lights, fits single rear wheel, red.</p> <p>_____ 262 NEW DURAMAG 8FT. SERVICE BODY aluminum, heavy slam latch tailgate w/ stainless steel lock rods, swing doors w/ nitrogen props on vertical compartments, fully welded construction, black polymer rivetless door handles, LED lights, fits single rear wheel, red.</p> <p>_____ 262A NEW DURAMAG 8FT. SERVICE BODY aluminum, heavy slam latch tailgate w/ stainless steel lock rods, swing doors w/ nitrogen props on vertical compartments, fully welded construction, black polymer rivetless door handles, LED lights, fits single rear wheel, white.</p> <p>_____ 263 2007 INTERNATIONAL 7600 ROLLOFF TRUCK VN:645981 powered by Cummins diesel engine, equipped with automatic transmission, power steering, rolloff body, 18 ton winch, central hydraulics, double wing, snow plow set up, 44,000lb rears, 11R24.5 tires, tandem axle.</p> |
|---|--|--|

## EVERY ITEM SELLS AS IS WHERE IS

THIS LISTING IS SUBJECT TO ALEX LYON & SON'S TERMS AND CONDITIONS, INCLUDING WITHOUT LIMITATION, THIS IS ONLY A "GUIDE" AND MAY NOT BE ACCURATE, THAT ALL SALES ARE FINAL AND THAT BUYER IS RESPONSIBLE FOR INSPECTION OF ALL EQUIPMENT PRIOR TO BIDDING. ALEX LYON & SON DOES NOT OFFER SHIPPING ON THIS LOT AND SUCH SHIPPING IS THE SOLE RESPONSIBILITY OF BUYER. THANK YOU FOR YOUR BUSINESS.

- |  |  |   |
|--|--|---|
| <p>_____ 264 2005 INTERNATIONAL 7600 WATER TRUCK VN:149973 powered by Cummins diesel engine, equipped with automatic transmission, power steering, 3000 gallon stainless steel deicer/ water tank, central hydraulics, under body scrapper, set up for plow &amp; wing blade, closed loop system, tandem axle, 63,000 miles.</p> <p>_____ 265 CASE W602 VIBRATORY ROLLER SN-840059111 powered by Deutz diesel engine, equipped with OROPS, 66in. Smooth drum, vibratory drum, drum drive, 3,400 hours.</p> <p>_____ 267 2015 COMPAC ASPHALT ROLLER T175 SN 132009 powered by Honda gas engine, 24hp, equipped with 36in. Smooth drum, vibratory drum, double drum, drum drive, water system, 350 hours.</p> <p>_____ 270 2007 LEEBOY 1000D ASPHALT PAVER SN:27671 powered by Deutz diesel engine, equipped with 8ft-13ft. Screed, vibratory system, steel tracks.</p> <p>_____ 271 SNORKEL TBA 42 BOOM LIFT SN-993850 electric powered, equipped with 42ft. Platform height, articulating boom, 500lb lift capacity.</p> <p>_____ 272 JLG 1230ES SCISSOR LIFT SN:200006235 electric powered, equipped with 12ft. Platform height, slide out deck, 500lb lift capacity.</p> <p>_____ 273 MAGNUM MLT3060 LIGHT PLANT SN-104356 powered by diesel engine, equipped with 4-1,000 watt lightbulbs, 6KW, trailer mounted.BOS ONLY</p> <p>_____ 274 2009 CAT TL943 TELESCOPIC FORKLIFT 4x4, powered by Cat diesel engine, equipped with OROPS, 9,000lb lift capacity, 43ft. Reach height, auxiliary hydraulics, front stabilizers, tilt &amp; tipping forks, solid rubber tired, 2,600 hours.</p> | <p>_____ 275 JLG/GRADALL G6-42A TELESCOPIC FORKLIFT SN:1347 4x4, powered by John Deere diesel engine, equipped with EROPS, air, heat, 3-way steering, 6,000lb lift capacity, 42ft. Reach height, tipping forks.</p> <p>_____ 276 POWER ANGLE PLOW SNOW EQUIPMENT</p> <p>_____ 277 FUNNEL PLOW SNOW EQUIPMENT</p> <p>_____ 279 PROTECH 8FT. SNOW PUSHER SNOW EQUIPMENT</p> <p>_____ 280 FISHER 8FT. MM2 X-BLADE SNOW EQUIPMENT 3-wire, snow foil intensifer lights, used 1 season.</p> <p>_____ 281 HIWAY 2.5 YARD STAINLESS STEEL SANDER W/ SPINNER SNOW EQUIPMENT electric controls.</p> <p>_____ 286 EXMARK COMMERCIAL MOWER powered by gas engine, 18hp, equipped with 48in. Cutting deck, zero turn, walkbehind.</p> <p>_____ 290 12FT. WING PLOW SNOW EQUIPMENT</p> <p>_____ 291 12FT. WING PLOW SNOW EQUIPMENT</p> <p>_____ 292 14FT. HYDRAULIC FLIP ROLL OVER SNOW PLOW SNOW EQUIPMENT from military for snow fighter.</p> <p>_____ 293 2017 FLINK 12FT. STAINLESS STEEL SANDER SNOW EQUIPMENT top grates spinner assembly.</p> <p>_____ 294 NEW LANEAU AR400 17FT. STEEL DUMP BODY</p> | <p>_____ 295 1992 CHEVY KODIAK DUMP TRUCK VN: 100345 powered by Cat 3126 diesel engine, equipped with automatic transmission, power steering, dump body, 10ft. Stainless steel sander, central hydraulics, set up for plow &amp; wing, 11R22.5 tires, dual wheel single axle.</p> <p>_____ 296 2000 INTERNATIONAL 4900 SNOW PLOW TRUCK VN:304930 powered by DT466R diesel engine, equipped with automatic transmission, power steering, 2017 Highway E2020 stainless steel sander, snow plow hitch, dual wheel single axle.</p> <p>_____ 297 1997 INTERNATIONAL 2554 DUMP TRUCK VN:1HTGBAARXVH487411 powered by IH DT466 diesel engine, equipped with automatic transmission, power steering, Henderson 10ft. stainless steel steel body, front plow frame, Swenson 10ft. stainless steel slide in sander, 36000 GVWR, 11R22.5 rear tires, dual wheel single axle, 93,110 miles.</p> <p>_____ 298 STETCO CATCH BASIN BOOM ATTACHMENT TRUCK PARTS &amp; ACCESSORIES</p> <p>_____ 300 CAT 426B TRACTOR LOADER BACKHOE SN:6KL01451 4x4, powered by Cat dieael engine, equipped with EROPS, extendahoe, GP front bucket, rear digging bucket.</p> <p>_____ 301 JOHN DEERE 410 TRACTOR LOADER BACKHOE SN:820930 4x4, powered by John Deere diesel engine, equipped with EROPS, extendahoe, GP front bucket, rear digging bucket.</p> |
|--|--|---|

## EVERY ITEM SELLS AS IS WHERE IS

THIS LISTING IS SUBJECT TO ALEX LYON & SON'S TERMS AND CONDITIONS, INCLUDING WITHOUT LIMITATION, THIS IS ONLY A "GUIDE" AND MAY NOT BE ACCURATE, THAT ALL SALES ARE FINAL AND THAT BUYER IS RESPONSIBLE FOR INSPECTION OF ALL EQUIPMENT PRIOR TO BIDDING. ALEX LYON & SON DOES NOT OFFER SHIPPING ON THIS LOT AND SUCH SHIPPING IS THE SOLE RESPONSIBILITY OF BUYER. THANK YOU FOR YOUR BUSINESS.

- |           |   |            |  |            |  |
|-----------|---|------------|--|------------|--|
| _____ 302 | HOLDER C9700H SNOW UTILITY TRACTOR 4x4, powered by diesel engine, equipped with EROPS, red dot a/c, front 3pt hitch, front & rear PTO, auxiliary hydraulics, 60in. Power angle plow.          | _____ 313  | VOLVO L45 RUBBER TIRED LOADER SN:1951794 powered by diesel engine, equipped with EROPS, 3rd valve hydraulics, hydraulic quick coupler, GP bucket.  | _____ 326  | 2007 JOHN DEERE 5420 UTILITY TRACTOR powered by John Deere diesel engine, equipped with EROPS, air, heat, 9 speed powershift transmission, auxiliary hydraulics, rear PTO, Diamond flail mower. Hydraulic Power Angle Plow Sells Separately. |
| _____ 303 | HOLDER BLOWER SNOW UTILITY TRACTOR ATTACHMENT   | _____ 314  | CAT 910F RUBBER TIRED LOADER SN:ISF01462 powered by Cat diesel engine, equipped with EROPS, 3rd valve hydraulics, quick coupler, GP bucket, 15.5R25 rubber.  | _____ 327  | JOHN DEERE HYDRAULIC PLOW ATTACHMENT TRACTOR ATTACHMENT  |
| _____ 304 | HOLDER BLOWER SNOW UTILITY TRACTOR ATTACHMENT   | _____ 315  | VOLVO L110E RUBBER TIRED LOADER SN-60131 powered by diesel engine, equipped with EROPS, air, heat, 3rd valve hydraulics, ride control, quick coupler, 4 yard GP bucket, 23.5R25 rubber.                        | _____ 328  | TOWMOTOR FORKLIFT SN:78M317 powered by LP engine, equipped with OROPS, 4,000lb lift capacity.  |
| _____ 305 | V-PLOW SNOW UTILITY TRACTOR ATTACHMENT  | _____ 316  | HOUGH 60E RUBBER TIRED LOADER SN-837 powered by International diesel engine, equipped with EROPS, 3rd valve hydraulics, 2.5 yard GP bucket, 17.5R25 rubber.  | _____ 329  | LULL 844C-42 TELESCOPIC FORKLIFT SN-22-1178 4x4, powered by diesel engine, equipped with OROPS, 8,000lb lift capacity, 42ft. Reach height.   |
| _____ 306 | HOLDER SWEEPER SNOW UTILITY TRACTOR ATTACHMENT  | _____ 317  | HYUNDAI HL770-3 RUBBER TIRED LOADER SN:L104HI11247 powered by Cummins M11 diesel engine, equipped with EROPS, 5 yard GP bucket. New Batteries.   | _____ 330  | 2012 GEHL DL12-40H TELESCOPIC FORKLIFT SN:950753 4x4, powered by John Turbo diesel engine, equipped with EROPS, 12,000lb lift capacity, 40ft. Reach height.  |
| _____ 307 | POWER ANGLE PLOW SNOW UTILITY TRACTOR ATTACHMENT  | _____ 318  | 2009 JCB 426HT RUBBER TIRED LOADER SN:1295680 powered by diesel engine, equipped with EROPS, ride control, 3rd valve hydraulics, JRB quick coupler, 2.5 yard GP bucket, 20.5R25 rubber. Forks Sell Separately. | _____ 333  | KOMATSU PC228USCL-3 HYDRAULIC EXCAVATOR SN:21515 powered by Komatsu diesel engine, equipped with Cab, air, heat, digging bucket, long undercarriage.   |
| _____ 308 | HOLDER TIRES SNOW UTILITY TRACTOR ATTACHMENT  | _____ 318A | FORKS RUBBER TIRED LOADER ATTACHMENT for above machine.  | _____ 334  | KOMATSU PC200LC HYDRAULIC EXCAVATOR SN-83376 powered by Komatsu diesel engine, equipped with Cab, auxiliary hydraulics, JRB quick coupler, Esco 42in. Digging bucket, long undercarriage.  |
| _____ 309 | 2017 JOHN DEERE 724K RUBBER TIRED LOADER powered by John Deere diesel engine, equipped with EROPS, air, heat, Loadrite scale system, GP bucket, 26.5x25 rubber. Sells To Owners Confirmation. | _____ 325  | ATHEY M600 MOTOR GRADER SN-641123 powered by diesel engine, equipped with OROPS, hydrostatic drive, 10ft. Moldboard, knock down blade, setup up for laser alignment system.                                    | _____ 334A | 72IN. WRIST-O-TWIST BUCKET EXCAVATOR BUCKET  |
| _____ 310 | 2013 LIEBHERR L566 RUBBER TIRED LOADER SN:LZB032774 powered by diesel engine, equipped with EROPS, air, heat, GP bucket.  |            |  |            |  |
| _____ 311 | 2010 JOHN DEERE 524K RUBBER TIRED LOADER SN:A0631366 powered by John Deere diesel engine, equipped with EROPS, quick coupler, 104in. GP bucket, 20.5 x 25 rubber.                             |            |  |            |  |
| _____ 312 | VOLVO L45B RUBBER TIRED LOADER SN:952245 powered by diesel engine, equipped with EROPS, air, heat, ride control, 3rd valve hydraulics, quick coupler, 3 yard GP bucket.                       |            |  |            |  |



## EVERY ITEM SELLS AS IS WHERE IS

THIS LISTING IS SUBJECT TO ALEX LYON & SON'S TERMS AND CONDITIONS, INCLUDING WITHOUT LIMITATION, THIS IS ONLY A "GUIDE" AND MAY NOT BE ACCURATE, THAT ALL SALES ARE FINAL AND THAT BUYER IS RESPONSIBLE FOR INSPECTION OF ALL EQUIPMENT PRIOR TO BIDDING. ALEX LYON & SON DOES NOT OFFER SHIPPING ON THIS LOT AND SUCH SHIPPING IS THE SOLE RESPONSIBILITY OF BUYER. THANK YOU FOR YOUR BUSINESS.

- |   |  |   |
|---|--|---|
| <p>_____ 335 HYUNDAI 180LC- ROBEX HYDRAULIC EXCAVATOR SN:EL01DD10167 powered by Cummins 6BT diesel engine, equipped with Cab, digging bucket w/ hydraulic thumb, long undercarriage.</p> <p>_____ 336 LINKBELT 160LX HYDRAULIC EXCAVATOR SN:1046 powered by diesel engine, equipped with Cab, hammer lines, digging bucket.</p> <p>_____ 338 KUBOTA U55 HYDRAULIC EXCAVATOR SN:20799 powered by Kubota diesel engine, equipped with Cab, air, heat, front blade, auxiliary hydraulics, rubber tracks, digging bucket.</p> <p>_____ 339 CASE CX50BZTS HYDRAULIC EXCAVATOR SN:81893 powered by Yanmar diesel engine, equipped with OROPS, 2-speed, front blade, auxiliary hydraulics, rubber tracks, zero tail swing, digging bucket w/ hydraulic thumb.</p> <p>_____ 340 JOHN DEERE 450C CRAWLER TRACTOR SN:29390LT powered by John Deere diesel engine, equipped with OROPS, 6 way blade.</p> <p>_____ 342 EMAQ RIPPER TOOTH EXCAVATOR RAKE for Cat 304.</p> <p>_____ 343 EMAQ RIPPER TOOTH EXCAVATOR RAKE for Cat 307.</p> <p>_____ 344 TERAN TRENCH ROLLER EXCAVATOR ATTACHMENT for 160 size machine.</p> <p>_____ 345 12IN. QUICK EXCHANGE DIGGING BUCKET EXCAVATOR BUCKET for Kubota KX121.</p> <p>_____ 346 NEW FLECO 6FT. TILTING BUCKET EXCAVATOR BUCKET for Cat 328 or 330 size machines.</p> | <p>_____ 347 36IN. DIGGING BUCKET 36IN. DIGGING BUCKET EXCAVATOR BUCKET for Cat 318 or 320 size machines.</p> <p>_____ 348 WAIN ROY WRIST-O-TWIST COUPLER EXCAVATOR ATTACHMENT</p> <p>_____ 349 WAIN ROY QUICK COUPLER EXCAVATOR ATTACHMENT for Cat 308 or 420 backhoe.</p> <p>_____ 350 NEW BODINE TH300 EXCAVATOR THUMB To Fit Exc: 50-88,000 lbs. 30" W x 57" L.</p> <p>_____ 351 NEW BODINE TH250 EXCAVATOR THUMB To Fit Exc: 34-50,000 lbs. 24" H x 53" L.</p> <p>_____ 352 NEW CONTEC 35 HYDRAULIC THUMB EXCAVATOR THUMB</p> <p>_____ 353 ASC QUICK COUPLER RUBBER TIRED LOADER ATTACHMENT for John Deere 644.</p> <p>_____ 354 ASC QUICK COUPLER RUBBER TIRED LOADER ATTACHMENT for John Deere 544.</p> <p>_____ 355 FORKS RUBBER TIRED LOADER ATTACHMENT</p> <p>_____ 356 CAT 4FT. GP BUCKET RUBBER TIRED LOADER ATTACHMENT</p> <p>_____ 357 84IN. SNOW BUCKET SNOW EQUIPMENT</p> <p>_____ 358 3.5 YARD JRB STRAIGHT EDGE BUCKET RUBBER TIRED LOADER ATTACHMENT</p> <p>_____ 359 HYDRAULIC THUMB EXCAVATOR THUMB for Cat 305, Komatsu PC45 size machines.</p> <p>_____ 360 CAT LOADER BUCKET</p> <p>_____ 361 LITE MATERIAL BUCKET</p> | <p>_____ 370 2012 MACK TITAN 713 TRUCK TRACTOR VN:CM001407 powered by Mack diesel engine, 605hp, equipped with 18 speed transmission, power steering, wet system, 44,000lb rears, tandem axle.</p> <p>_____ 371 FREIGHTLINER CAR HAULER VN:10167 powered by Mercedes MBE diesel engine, 400hp, equipped with 10 speed transmission, power steering, wet system, air ride, tandem axle, with 5 car capacity, hydraulic controlled, air brakes, air ride, 11R22.5 tires, hub pilot wheels, tandem axle.</p> <p>_____ 372 1990 AUTOCAR WG64B BOOM TRUCK VIN -63234 6x6, powered by Big Cam Cummins diesel engine, 400hp, equipped with 16 speed transmission, Simon TC-120-4 crane, 22 ton lift capacity, 45ft. 3-section boom, outriggers, 12R24 rubber. BILL OF SALE ONLY. NO TITLE</p> <p>_____ 373 1995 MACK CH613 ATTENUATOR TRUCK VN: 06343 powered by Mack diesel engine, 300hp, equipped with 6 speed transmission, power steering, Safe Stop Energy Absorption system, air brakes, dual wheel single axle.</p> <p>_____ 374 2002 E ONE FIRE TRUCK VN:1004790 powered by Cummins diesel engine, equipped with automatic transmission, power steering, 1250 gallon per minute pump, auxiliary hydraulics for jaws of life, 1500 gallon tank, tool compartments, 315/80R22.5 front tires, 11R22.5 rear tires.</p> <p>_____ 375 1996 E-ONE PUMPER FIRE TRUCK VN:1005743 powered by Cummins diesel engine, equipped with Allison automatic transmission, power steering, a/c, heat, 500 gallon tank, air brakes, dual wheel single axle.</p> |
|---|--|---|

## EVERY ITEM SELLS AS IS WHERE IS

THIS LISTING IS SUBJECT TO ALEX LYON & SON'S TERMS AND CONDITIONS, INCLUDING WITHOUT LIMITATION, THIS IS ONLY A "GUIDE" AND MAY NOT BE ACCURATE, THAT ALL SALES ARE FINAL AND THAT BUYER IS RESPONSIBLE FOR INSPECTION OF ALL EQUIPMENT PRIOR TO BIDDING. ALEX LYON & SON DOES NOT OFFER SHIPPING ON THIS LOT AND SUCH SHIPPING IS THE SOLE RESPONSIBILITY OF BUYER. THANK YOU FOR YOUR BUSINESS.

- |   |  |  |
|---|--|--|
| <p>_____ 376 1989 FORD LN8000 WATER TRUCK VIN 39033 powered by Cummins diesel engine, equipped with 6 speed transmission, power steering, 1500 gallon stainless steel tank, 200 gallon fuel tank system &amp; pump, dual wheel single axle.</p>   | <p>_____ 382 1999 STERLING DUMP TRUCK VN:A74151 powered by Cat C15 diesel engine, 475hp, equipped with 8LL transmission, power steering, 17ft. 2in. Steel dump body, 3-asphalt chutes, 20,000lb fronts, 20,000lb pusher, 46,000lb rears, spring suspension, pintle hitch &amp; air to the rear, 11R24.5 tires, air lift third axle, triaxle.</p> | <p>_____ 388 1987 MACK RW713 SUPERLINER DUMP TRUCK VN:HM002539 powered by Mack diesel engine, 350hp, equipped with 12 speed transmission, dual exhaust, Jake brake, 14ft. Steel dump w/ asphalt chutes, electric tarp, 44,000lb rears, Mack camelback suspension, air and pintle to the rear, 11R24.5 rubber, tandem axle.</p>   |
| <p>_____ 377 1979 FORD F7000 WATER TRUCK VN:ED0568</p>  | <p>_____ 383 2001 MACK RD688S DUMP TRUCK VN:56448 powered by Mack E7 diesel engine, 400hp, equipped with 10 speed transmission, power steering, a/c, 15ft. Steel dump body, asphalt chute, 44,000lb rears, pintle &amp; air to rear, 11R24.5 tires, tandem axle.</p>   | <p>_____ 389 1988 MACK RW613 SUPERLINER DUMP TRUCK VN:M004737 powered by Mack diesel engine, 350hp, equipped with Mack 13 speed transmission, power steering, 14ft. Steel dump body, 11ft. Snow plow, camelback suspension, 44,000lb rears, 11R24.5 tires, tandem axle.</p>  |
| <p>_____ 378 INTERNATIONAL 1654 68.5 VN:571967 powered by 7.3L diesel engine, equipped with 5 speed transmission, 2009 Rytech infrared hot box w/ 3-chutes, Bomag BW55E patch roller, dual wheel single axle.</p>   | <p>_____ 384 2002 KENWORTH T800 ROLLOFF TRUCK VN:865177 powered by Cat diesel engine, equipped with 8LL transmission, power steering, Galbreath rolloff body, Pioneer cover, 20,000lb fronts, 46,000lb rears, 11R24.5 tires, tandem axle.</p>  | <p>_____ 390 OSHKOSH P.284.51 SNOW PLOW TRUCK VN:10394 4x4, powered by Cummins diesel engine, equipped with automatic transmission, 10ft. Dump body, 13ft. Rollover plow, 14.24 tires, tandem axle, 9,589 miles.BILL OF SALE ONLY</p>  |
| <p>_____ 379 2002 STERLING LT9500 VACUUM TRUCK VN:K12088 powered by diesel engine, equipped with 10 speed transmission, power steering, Guzzler Manufacturing vacuum system, PTO hydraulic system, spring suspension, 46,000lb rears, tandem axle.</p>  | <p>_____ 385 TEREX 3566 ARTICULATED HAUL TRUCK SN:A7561026 6x6, powered by Detroit diesel engine, equipped with Cab, 35 ton capacity, 26.5 x 25 rubber.</p>  | <p>_____ 391 2000 INTERNATIONAL 4900 SNOW PLOW TRUCK VN:264518 powered by DT530 diesel engine, equipped with Allison automatic transmission, power steering, 10ft. Aluminum dump body, set up for plow wing &amp; sander, dual wheel single axle.</p>  |
| <p>_____ 380 2009 FREIGHTLINER M2 UTILITY TRUCK VN:HAM0292 Natural gas engine, equipped with automatic transmission, enclosed utility body w/ heat, air brakes, dual wheel single axle, 13,913 miles.</p>   | <p>_____ 386 JOHN DEERE 790E HYDRAULIC EXCAVATOR SN:15869 powered by John Deere diesel engine, equipped with Cab, auxiliary hydraulics, 42in. Digging bucket. Low hours on New Engine.</p>   | <p>_____ 392 2009 INTERNATIONAL 7600 WORKSTAR DUMP TRUCK VN:1HTWXAHX9J109750 powered by Cummins ISM diesel engine, equipped with Road Ranger 8LL transmission, power steering, Tenco dump body spreader Mdl TCB-13-T-AH-S-LF body, front plow frame, wing plow frame, 20,000lb fronts, 46,000lb rears, spring suspension, 425/65R22.5 front tires, 12R22.5 rear tires, tandem axle. BOS ONLY</p> |
| <p>_____ 381 1997 FORD LT9000 DUMP TRUCK VN:A18351 powered by Cat 3406 diesel engine, equipped with Road Ranger 8LL transmission, power steering, Bibeau 16ft. steel dump body, spring suspension, 20,000lb pusher, 46,000lb rears, 425/65R22.5 front tires, 11R22.5 pusher tires, 11R24.5 rear tires, triaxle.</p> | <p>_____ 387 2002 GMC C6500 CAB &amp; CHASSIS VIN-507479 powered by Cat diesel engine, equipped with 6 speed transmission, power steering, 18ft. Frame, 11R22.5 tires, dual wheel single axle.</p>   |  |

## EVERY ITEM SELLS AS IS WHERE IS

THIS LISTING IS SUBJECT TO ALEX LYON & SON'S TERMS AND CONDITIONS, INCLUDING WITHOUT LIMITATION, THIS IS ONLY A "GUIDE" AND MAY NOT BE ACCURATE, THAT ALL SALES ARE FINAL AND THAT BUYER IS RESPONSIBLE FOR INSPECTION OF ALL EQUIPMENT PRIOR TO BIDDING. ALEX LYON & SON DOES NOT OFFER SHIPPING ON THIS LOT AND SUCH SHIPPING IS THE SOLE RESPONSIBILITY OF BUYER. THANK YOU FOR YOUR BUSINESS.

- |           |  |           |  |            |  |
|-----------|--|-----------|--|------------|--|
| _____ 393 | INTERNATIONAL 4700 VAN TRUCK VN:39649 powered by DT466E diesel engine, equipped with automatic transmission, power steering, 24ft. Van body, air ride, air brakes, 22.5 tires, dual wheel single axle.   | _____ 401 | HURRICANE 755 INDUSTRIAL VACUUM LOADER BRIDGE EQUIPMENT VN:7551015 strong vacuum pulls 27in. of mercury, hopper extends to dump into dumpster or dump truck.BOS ONLY                         | _____ 430  | FONTAINE FLATBED TRAILER VN:6195 equipped with 53ft. Flatbed body, headache rack, tie down straps, wood deck, sliding axles, tandem axle.  |
| _____ 394 | CHAMPION MOTOR GRADER SN:511622 powered by Detroit diesel engine, equipped with powershift, 14ft. Moldboard, 12ft. Snow wing, front plow frame, Ice scrapper blades, 14R24 tires.  | _____ 402 | ELECTRIC FRACULATORS 3-PHASE CONVEYOR BELT CONVEYOR BELT Completely Reconditioned.   | _____ 431  | 6 TON TAGALONG TRAILER VN:5562 equipped with electric brakes, pintle hitch, tandem axle. Bill of Sale Only.  |
| _____ 395 | 2000 FORD F250 PICKUP TRUCK VN:E18447 powered by gas engine, equipped with automatic transmission, power steering, utility body, dual wheel single axle.   | _____ 403 | ELECTRIC FRACULATORS 3-PHASE CONVEYOR BELT CONVEYOR BELT Completely Reconditioned.   | _____ 432  | 2004 HUDSON 10 TON TAGALONG TRAILER VIN 000316 equipped with 10 ton capacity, electric brakes, HD jack, fold down ramps, tandem axle.  |
| _____ 396 | TORWELL SALT SPREADER  | _____ 404 | ELECTRIC FRACULATORS 3-PHASE CONVEYOR BELT CONVEYOR BELT Completely Reconditioned.   | _____ 434  | 2008 KAUFMAN 8 TON TAGALONG TRAILER VN:L001272 equipped with 8 ton capacity, tilt deck, tandem axle.   |
| _____ 399 | ADI BLAST RECYCLING UNIT BRIDGE EQUIPMENT Machine has less than 400 hours on it since these upgrades performed by ADI, extended recycle grit storage hopper 2-additional 24in. Blast pots, 3,000CFM air dryer, New ADI combo control panel, New ADI twin dust collector, dual double dump valve(vacuum side), mini pucker(reclaim side), secondary filters for the vacuum, vacuum deadman assemblies, New ADI VGS, vacuum grit storage hopper w/ screen, Extra 300 gallon fuel tank, New dust collector pucker. Sells Offsite: 49 Danton Dr Suite #201, Methuen, MA 01844. For More Info Contact: AJ 978-500-0248. | _____ 405 | 18K PSI PRESSURE WASHER powered by Cat 3306 diesel engine, equipped with 100 gallon fuel tank, PTO driven.   | _____ 434A | SNOW BLADE   |
| _____ 400 | ARS 4 POT TAGALONG RECYCLER W/ BLOWER BRIDGE EQUIPMENT VN:48287 Completely gone through in 2015, prefect for smaller/ tight projects, low hours! BOS ONLY  | _____ 406 | 18K PSI PRESSURE WASHER powered by Cat 3306 diesel engine, equipped with 100 gallon fuel tank, PTO driven.   | _____ 435  | 2008 MACK GU 713 PLOW TRUCK V-M004186 TITLE DELAY  |
|           |  | _____ 407 | 18K PSI PRESSURE WASHER powered by Cat 3306 diesel engine, equipped with 100 gallon fuel tank, PTO driven.   | _____ 450  | THERMO KING REFER UNIT TRAILER PARTS & ACCESSORIES   |
|           |  | _____ 408 | FORD 2600 UTILITY TRACTOR SN:6015F powered by gas engine, equipped with OROPS, 10 speed transmission, 3pt hitch, PTO, 7.50R16 front tires, B6-28 rear tires, 795 hours. US Government Owned. | _____ 451  | TIRES TIRES, NEW & USED  |
|           |  | _____ 409 | BATWING ATH900 82IN. MOWER TRACTOR ATTACHMENT with draft shaft, 3pt hitch.   | _____ 452  | TIRES TIRES, NEW & USED  |
|           |  | _____ 428 | GREAT DANE VAN TRAILER VN:239445 single axle. BILL OF SALE NO TITLE  | _____ 453  | TIRES TIRES, NEW & USED  |
|           |  | _____ 429 | VAN TRAILER VN:1343 tandem axle.   | _____ 454  | TIRES TIRES, NEW & USED  |
|           |  |           |  | _____ 455  | TIRES TIRES, NEW & USED  |
|           |  |           |  | _____ 456  | TRUCK RIMS WHEEL   |
|           |  |           |  | _____ 457  | VOLVO L90D RUBBER TIRED LOADER SN:64352 powered by diesel engine, equipped with EROPS, air, heat, 3rd valve hydraulics, ride control, hydraulic quick coupler, 3 yard GP bucket, 20.5R25 rubber. |



## LATE MODEL CONSTRUCTION EQUIPMENT AUCTION

Late Model Cat, John Deere, Komatsu  
Earthmoving Equipment, Attachments,  
Support, All Types of Trucks & Trailers



WED., OCT. 6<sup>TH</sup>

9:30 AM

1638 Oneida Valley Road,  
Chicora, PA 16025



**HIGHLIGHTS INCLUDE:** 2 ARTICULATED HAUL TRUCKS: Volvo A25D, Cat 250E, 7 HYDRAULIC EXCAVATORS: Cat 365CL, Cat 330CL, Cat 320EL, 2013 Cat 308ECR, 2011 Cat 304DCR, (2)2013 JD 290G, 4 RUBBER TIRED LOADERS: Cat 980G, Cat 930G, Cat 924K, Kawasaki 95Z-5, 7 CRAWLER TRACTORS: 2007 JD 850J, 2014 JD 750KLGP, (2)Cat D6RLGP, Cat D5NXL, Cat D4GXL, Cat D3B(winch), 3 CRAWLER LOADERS: (2)Cat 977L, Case 855D, TRACTOR LOADER BACKHOE: Case 580K(4x4), RUBBER TRACKED SKID STEER: Gehl CTL80, 2 VIBRATORY ROLLERS: 2012 Sakai SV510D, Hyster C830A, ASPHALT ROLLER: JCB Vibromax VMT280, TRENCHER: Case 360, 12 LIGHT PLANTS: (10)2018 Allmand Night Lite, (2)2012 Doosan LSC, AGRICULTURAL TRACTOR: JD 5520(4x4), 2 SERVICE TRUCKS: 2005 Ford F450, 2003 Ford F350, 2 ROLLOFF TRUCKS: 2002 Peterbilt 379(t/a), 1999 Freightliner FLD(tri), DUMP TRUCK: 1988 Kenworth T660(t/a), 2 TRUCK TRACTORS: 2009 Peterbilt 389(t/a), 1993 Peterbilt(t/a), DETACHABLE GOOSENECK TRAILER: Rogers 35-ton(t/a), DUMP TRAILER: CPS(steel frame, t/a), CARGO TRAILER: 1994 Haulmark G824 Elite(t/a), UTILITY TRAILER: Load Trail 7ft.x24ft.(tilt, tri), 2 SERVICE BODIES: New Duramag 9ft., New Duramag 6ft., 4 SCRAP RECYCLING EQUIPMENT: New 2-cu. yd. Self Dumping Hopper, (2)New 1.75-cu. yd. Self Dumping Hopper, New 1.75-yd. HD Trash Hopper, 10 SNOW EQUIPMENT: (10)New 96in. Snow Pushers, 5 PRESSURE WASHERS: (5)New Easy Kleen Magnum Gold, 4 EXCAVATOR BUCKETS: (2)Allu DH3-12 Screening, (2)Allu DH3-17 Screening, HYDRAULIC HAMMER: NPK GH-12, 28 ATTACHMENTS: (26)Skid Steer, 68 NEW SUPPORT EQUIPMENT.

SITE PHONE: (315) 633-2944

## RENTAL FLEET CONSTRUCTION & EARTHMOVING EQUIPMENT AUCTION

Construction & Earthmoving Equipment,  
Forklifts, Aerial Lifts, Attachments, Trucks,  
Trailers And Support Equipment



THURS., OCT. 7<sup>TH</sup>

9:30 AM

140 Clay Pike Road,  
Acme, PA 15610



**HIGHLIGHTS INCLUDE:** 4 ARTICULATED HAUL TRUCKS: (4)Volvo A40E, 14 HYDRAULIC EXCAVATORS: 2014 Cat 336EL, (2) Cat 336D, 2013 Cat 326FL, 2015 Cat 323FL, Cat 321DLGR, 2016 Hitachi ZX350LC, Hitachi ZX200LC-3, 2014 Sany SY335C, 2016 Komatsu PC170LC-10, 2008 Komatsu PC78US-6, 2008 Komatsu PC78MR-6, Komatsu PC50MR-3, Volvo 210, 7 CRAWLER TRACTORS: Cat D7E(cab, air), 2015 Cat D6TLGP(cab, AOR), 2018 Cat D6K2XL(cab, air), 2014 Cat D6KLGP(cab, AOR), 2011 Cat D6NLP, (2)2014 Case 2050MXLT, 4 RUBBER TIRED LOADERS: Cat 966M, Cat 962G, 2020 JD 244L, JCB 436ZX, 2 INTEGRATED TOOL CARRIERS: (2)Cat IT28G, 3 TRACTOR LOADER BACKHOES: (2)2016 JD 710K, Cat 416B, ASPHALT ROLLER: 2009 Volvo DD118HFA, RUBBER TRACKED SKID STEER: 2018 Case TR340, TELESCOPIC FORKLIFT: Cat TH460B, 12 LIGHT PLANTS: (12)2018 Allmand Night Lite, 2 UTILITY TRACTORS: Kubota L2550(4x4), Branson 2800(4x4), 3 AGRICULTURAL TRACTORS: (3)NH 9030 Versatile(4x4), 5 FUEL TRUCKS: 2014-2011 Freightliner M2(5,000gal, t/a), 1999 Freightliner(2,400gal, t/a), 1993 IH(4,000gal., t/a), 1989 Peterbilt 357(5,000gal., t/a), 3 TRUCK TRACTORS: (2)2015 Cat CT660(tri), 2006 IH 9400I(t/a), 3 DETACHABLE GOOSENECK TRAILERS: (3)2022 Witzco RG52(tri), STEP DECK TRAILER: 2005 Trailking 53ft.(t/a), FLATBED TRAILER: East 45ft.(t/a), 3 TAGALONG TRAILERS: Thomas Pro Tough(t/a), 38ft.(t/a), 16ft.(t/a), REEL TRAILER, 3 VACUUM TANK BODIES: 120 Barrel Aluminum(w/hose tray), (2)110 Barrel(w/hose tray), 2 SERVICE BODIES: New Duramag 9ft., New Duramag 8ft., 4 SCRAP RECYCLING EQUIPMENT: New 2-cu. yd. Self Dumping Hopper, (2)New 1.75-cu. yd. Self Dumping Hopper, New 1.75-yd. HD Trash Hopper, 10 SNOW EQUIPMENT: (10)New 96in. Snow Pushers, 5 PRESSURE WASHERS: (5)New Easy Kleen Magnum Gold, HYDRAULIC HAMMER: NPK GH-18, 2 EXCAVATOR BUCKETS: (2)2017 Allu DH317, 25 ATTACHMENTS: (25)Skid Steer, 63 NEW SUPPORT EQUIPMENT.

SITE PHONE: (315) 633-2944



**ABSOLUTE REAL ESTATE AUCTION  
SELLING TO SETTLE ESTATE**

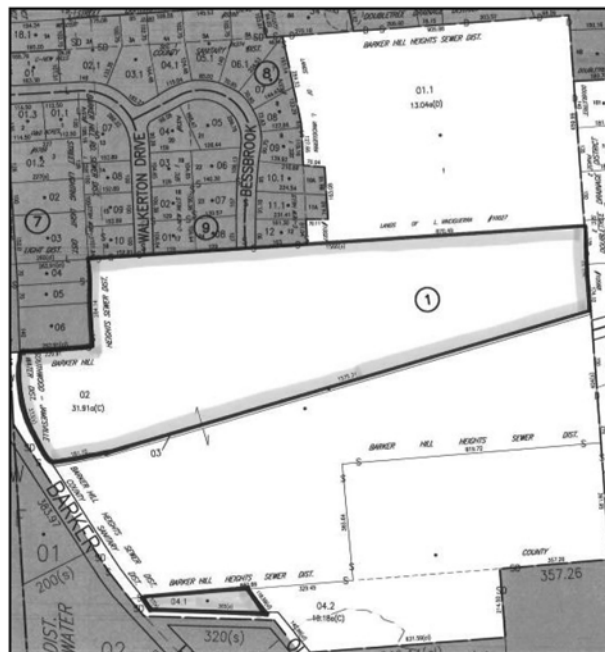
*33 Acre Vacant Parcel In Area of Nice  
Homes, 4 miles from City of Syracuse*



**THURS., OCT. 21<sup>ST</sup>**

**5:30 PM**

**4432 -4452 Barker Hill Road  
Jamesville, NY 13078**



**Auction to be held at the Sale Property  
4452 Barker Hill Rd, Jamesville NY.**

**33 Acre Vacant Parcel in Area of Great Homes  
LOTS OF POSSIBILITIES!**

Nice Piece of Property that is Both Open and Wooded. Property has public utilities at the Street. Property borders several Fancy Homes and 2 different subdivisions. 4 miles from City of Syracuse. Come Take A look! Onondaga County - Tax map id # 082.1-01-02 and tax id # 082.1-01-14.1.

**Property Sells Absolute** to the Highest Bidder Regardless of Price! Property Sells As-Is with No Contingencies!

**Inspection of Property:** You are Welcome to Walk the property at any time. Registration starts onsite at 4pm day of Auction. Selling for The Sterritt Estate.

**Also Selling:** JD Riding Mower, Champion 4000 watt generator. Equipment Sold By Alex Lyon & Son.

**SITE PHONE: (607) 692-4540**

**CONSOLIDATION AUCTION**

*~ St. Onge Transportation & Contracting ~  
Very Good Construction Equipment, John Deere Tractors,  
Krone Agricultural Equipment, Large Quantity Truck  
Tractors, Dump Trucks, Straight Trucks, Dump Trailers,  
Attachments and Support*



**FRI., OCT. 29<sup>TH</sup>**

**9:30 AM**

**92 Shattuck Hill Road,  
Newport, VT 05855**



**HIGHLIGHTS INCLUDE:** TUB GRINDER: Hogzilla TCII, 4 HYDRAULIC EXCAVATORS: 2011 Cat 336EL, 2006 Cat 325CL, 2006 Cat 312CL, 2014 Cat 304ECR, 4 CRAWLER TRACTORS: Cat D8L, Cat D7H, 2004 Cat D4GXL, 2000 JD 550HLT, RUBBER TIRED LOADER: Cat 950G, TRACTOR LOADER BACKHOES: Cat 420DIT, 2 ARTICULATED HAUL TRUCKS: (2)Volvo A40G, 2 RUBBER TRACKED SKID STEERS: 2012 JD 333D, JD CT332, SKID STEER: Case 1845C, MOTOR GRADER: Champion 720, 4 AGRICULTURAL TRACTORS: JD 8520(4x4), JD 7930(4x4), JD 7920(4x4), JD 7230R, HAY EQUIPMENT: 2012 Anderson SB-780 Bale Wrapper, 3 DISC HARROWS: JD Soil Management System 512, Agco Unimulch UM6000, Massey Ferguson 520, PLANTING EQUIPMENT: White 6100 6-Row Corn Planter, 4 MANURE SPREADERS: 2011 Jamesway, (2)1986 Manac(tri), Houle 4050, RAKE: 2014 Krone Swadro 907 Twin Rotor, SERVICE TRUCK: 2005 Chevy 3500(crane), ROLLBACK TRUCK: 2005 Freightliner M2, 6 DUMP TRUCKS: 2016 Kenworth T880(tri), 2016 Kenworth T800(tri), 2013 Peterbilt 365(tri), 2007 Mack CT713 Granite(tri), 1999 Mack RD688S(t/a), 1989 Mack RB688S(t/a), 17 TRUCK TRACTORS: 2017 Western Star 5700XE(t/a), 2012 Western Star 4900EX(t/a), 2008 Western Star 4900FA(t/a), 2005 Western Star 4900A(t/a), (2)2016 Peterbilt 579(t/a), 2014 Peterbilt 388(t/a), 2010 Peterbilt 389(t/a), 2008 Kenworth W900(sleeper), 2008 Kenworth T800(t/a), (2)2016 Freightliner 122SD(t/a), 2011 Freightliner Coronado SD(t/a), 2016 Peterbilt 389, 2013 Kenworth W900, 2001 Mack, SNOW PLOW TRUCK: 2008 Chevy 2500(4x4), LOG LOADER TRUCK: IH 2374, 2 EQUIPMENT TRAILERS: 2000 Landoll(t/a), 50-ton(tri), 2 TAGALONG TRAILERS: 2015 Cam Superline 20(t/a), Quality 22ft.(t/a), 2 LIVE BOTTOM TRAILERS: 2001 Red River LB334(tri), 1999 Flow Boy CB4000(tri), DUMP TRAILER: 2005 East Genesis(tri), LOG TRAILER: 1998 Deloupe 45ft.(tri), FLATBED TRAILER: Ravens 40ft(t/a), VAN TRAILER: 1996 Manac 42ft(tri), FLATBED BODY: 24ft.x97in., DUMP BODY: Reading Marauder 9ft. Steel, SNOWMOBILE: 2019 Arctic Cat, 65 NEW SOLAR PANELS, 2 NEW & USED TIRES: (2)29.5R25(Volvo A40), (2)20.8R42(JD Tractor), 8 ATTACHMENTS: (4)Skid Steer, (3)Tractor, Wheel Loader, SUPPORT EQUIPMENT.

**SITE PHONE: (315) 633-2944**

EVERY ITEM SELLS AS IS WHERE IS

# ANNOUNCING THE 28<sup>TH</sup> ANNUAL 9-DAY FLORIDA AUCTION

**New Location - Bushnell, Florida**

**Saturday, February 5 thru  
Sunday, February 13 @ 9:00AM**



**NOW TAKING CONSIGNMENTS**



Site Phone: (262) 903-6269 • FL License: AB-1091 • FL Auctioneer: AU-1548 Jack Lyon • Office: (315) 633-2944 • Fax: (315) 633-5635



Visit [WWW.LYONAUCTION.COM](http://WWW.LYONAUCTION.COM)  
for Complete Equipment List,  
Descriptions and Pictures.



*America's Auction Company. Big enough for the industry leaders, yet personal enough for America's farmer.*

**[www.LYONAUCTION.com](http://www.LYONAUCTION.com)**



# CONSTRUCTION EQUIPMENT FINANCING

Alex Lyon & Son Sales Managers and Auctioneers, Inc. have several partners to help with our construction equipment financing. Alex Lyon & Son is pleased to be working with our financing partners, Patriot Financial LLC, Streamline Financial Services, Oakmont Capital Services, LLC, and Smart Business Credit.



**Streamline Financial Services** is a nationally recognized lending specialist working with auction companies and vendors on a daily basis to assist their customers obtain financing for equipment. We offer a variety of financial solutions for light duty to heavy duty, titled equipment (trucks and trailers) to all non-titled equipment (yellow iron, aerial lifts, chippers, skid steers, etc). The representatives at Streamline Financial are experts in finding the best financial program for construction and transportation equipment. We have a solution for all levels of credit from A+ to challenged, and also offer Line of Credit and Working Capital programs to complement your businesses cash flow constraints. Please call Customer Service at 440-358-5060.



**Oakmont Capital Services, LLC** is a fast, affordable, reputable solution to financing. Founded in 1998 by Managing Members Joe Leonard, CLFP and Megan Zoba, Oakmont Capital Services (OCS) is a direct lender, providing commercial equipment financing and working capital throughout all 50 states. The professional financing staff at OCS has the combined experience of over 250 years in the industry and specializes in both titled and non-titled equipment funding. For over 20 years, we've been helping customers secure financing while offering quick turnarounds, no down payments, application only financing, E-docs for speedy processing plus A, B, and C credit options. Call Mike Macy, Business Development Officer at 315-744-3626 for pre-approval. We make it possible!



**Patriot Financial LLC** makes low-rate business financing and equipment leasing easy! We're dedicated to providing corporate and small businesses financial solutions to you, so you can grow your company. For Immediate or pre-auction approval please call Customer Service at 866-633-6003 or you may apply on line with our secure site at [www.patriotfinancialllc.com](http://www.patriotfinancialllc.com).



**Smart Business Credit** is one of the most experienced equipment leasing and finance companies in the industry, to provide financing for our customers. For instant credit approvals, contact Customer Service at 800-798-6862. Also available is a secure online application at [www.Smartbusinesscredit.com](http://www.Smartbusinesscredit.com).

## Lyon Live

Go to the iTunes App Store and search **Lyon Live** to download the latest version of our app for iPad or iPhone to be ready to bid at our next auction!

This convenient system allows you to use your current online bidder information and includes all of the easy-to-use features of the existing platform.



# AUCTION CALENDAR

**GO TO WWW.LYONAUCTION.COM FOR START-STOP TIMES ON OUR TIMED & LIVE AUCTIONS**

1. **LIVE:** Wednesday, October 6: **PITTSBURGH (BUTLER), PENNSYLVANIA:** Late Model Cat, John Deere, Komatsu Earthmoving Equipment, Attachments, Support, All Types of Trucks & Trailers.
2. **LIVE:** Thursday, October 7: **PITTSBURGH (ACME), PENNSYLVANIA:** Rental Fleet Construction & Earthmoving Equipment, Forklifts, Aerial Lifts, Attachments, Trucks, Trailers and Support Equipment.
3. **TIMED:** Saturday October 16 to Thursday, October 21: **SYRACUSE, NEW YORK:** 3 Real Estate Parcels and Light Construction Equipment.
4. **LIVE:** Thursday, October 21: **SYRACUSE, NEW YORK:** New Generators, New Pressure Washers, Like-New Lawnmower. One 30+ Acre Parcel of Real Estate.
5. **LIVE:** Saturday, October 23: **PLYMOUTH, MASSACHUSETTS:** Snow, Construction, Utility Equipment, Aerials, Forklifts, Snow Related Accessories and Support Equipment, Trucks, Trailers.
6. **ONLINE AUCTION:** Thursday, October 28: **QUERETARO, MEXICO:** Late Model Cat, Case, John Deere, Volvo Construction Equipment, Aerial Lifts, Forklifts, Trucks and Trailers, Large Quantity Attachments & Support Equipment.
7. **LIVE:** Friday, October 29: **NEWPORT, VERMONT:** Consolidation Auction. A Great Auction. 1-Owner. Very Good Construction Equipment (Primarily Cat), John Deere Tractors, Krone Agricultural Equipment (Haying & Forage), Large Quantity Truck Tractors (Peterbilt & Mack), Dump Trucks, Straight Trucks, Dump Trailers, Attachments and Support.
8. **LIVE:** Saturday, October 30: **EDISON, NEW JERSEY:** Lost Lease on Property after 30 Years. Paving, Construction, Utility Equipment, Trucks, Trailers, Attachments, Large Quantity Support and Shop Equipment.
9. **LIVE:** Friday, November 5: **SYRACUSE, NEW YORK:** Partial Downsizing. Construction & Utility Equipment, Truck Tractors, Dump Trucks, Trailers.
10. **LIVE:** Saturday, November 6: **SYRACUSE, NEW YORK:** Large Rental Return Auction of Cat, John Deere, Komatsu, Daewoo Construction Equipment, Aerial Lifts, Forklifts, Attachments, Support, Trucks and Trailers of all kinds.
11. **LIVE:** Sunday, November 7: **PALERMO (FULTON-MEXICO AREA), NEW YORK:** 2 Acres of Real Estate, Building, Construction Accessories.
12. **LIVE:** Tuesday, November 9: **VICTORIA (HOUSTON), TEXAS:** Acquisition Auction. Very Late Model Cat, John Deere Construction Equipment, Mooroka Crawler Dumps, Truck Tractors, and Oil Delivery Trailers. **HIGHLIGHTS:** Cat 14M, (5)2019 Cat 336, (2)Cat 336FL, Cat 330, (2)Cat 329, (5)2018 Cat 320TC, (2)JD 350G, (5)Cat D6TXL, Cat D6NLGP, Cat D6KLGP, Cat D5NLGP, (2)JD 650GLGP, (2)Cat 430D, Cat 420D, 2020 Cat 299D-3, (2)2020 Cat 289D, Mooroka MST1500(tack), IHI 45(tack), Volvo G990, Volvo G940VHP, Cat D4H Pipelayer.
13. **LIVE:** Wednesday, November 10: **HOUSTON, TEXAS:** Partial Liquidation of General Contractor and Late Model Rental Fleet Construction Equipment, Trucks, Trailers, Attachments, Support Equipment
14. **LIVE:** Thursday, November 11: **NEW YORK CITY, NEW YORK:** Large Aerial Lift, Forklift, Construction Equipment Auction, Excavators, Skid Steers, Support, Tools, Attachments, Pickups, Service Trucks.
15. **LIVE:** Friday, November 12: **CARMEL-BREWSTER, NEW YORK:** Retirement. Complete Liquidation of Construction, Utility Equipment, Aerial Lifts, Trucks, Trailers, Attachments and Support Equipment.
16. **LIVE:** Wednesday, November 17: **BARNESVILLE, OHIO:** Major Job Completion. Fracking Trucks, Water Trucks, Truck Tractors, (10)Articulated Haul Trucks, Full Line Construction Equipment, Service Trucks, Dump and Equipment Trailers, Attachments and Support Equipment.
17. **LIVE:** Thursday, November 18: **ELIZABETH, PENNSYLVANIA:** Retirement Auction. Complete Liquidation of Top-Notch Hydrofracking & Construction Equipment, Trucks, Very Large Amount of Very Fine Pumps & Support Equipment.
18. **LIVE:** Friday, November 19: **NEW MARTINSVILLE, WEST VIRGINIA:** Late Model Job Completion. Very Late Model Cat, Komatsu, John Deere Earthmoving Equipment, Trucks & Trailers.
19. **LIVE:** Saturday, November 20: **DELAWARE, OHIO:** Late Model Construction Equipment, Aerials, Forklifts, Truck Tractors, Dump Trucks, Service & Pickup Trucks, Large Quantity Van, Drop Deck and Detachable Trailers, Attachments and Support.
20. **LIVE:** Saturday, November 27: **BUFFALO, NEW YORK:** Construction, Utility & Agricultural Equipment, Trucks, Trailers, Attachments, Large Quantity Support Equipment.
21. **LIVE:** Thursday, December 9: **FORT WORTH, TEXAS:** Late Model Rental Fleet Equipment Auction. Primarily Cat, John Deere, Komatsu Construction Equipment, Aerial Lifts, Truck Tractors, Dump Trucks, Service and Pickup Trucks, Attachments New & Used Support.
22. **LIVE:** Saturday, December 11: **LAS VEGAS, NEVADA:** Late Model Boom Lifts, Aerial Lifts, Scissor Lifts, Forklifts, Construction Equipment Trucks Trailers, Support and Attachments.
23. **LIVE:** Wednesday, December 15: **PARAMUS, NEW JERSEY:** Rental Fleet Equipment, Telescopic & Warehouse Forklifts, Booms, Scissors, Construction Equipment, Air Compressors, Generators, Light Plants, Attachments, Support, Various Types of Trailers and Trucks.
24. **LIVE:** Saturday, December 18: **ATLANTIC CITY, NEW JERSEY:** Late Model Construction Equipment, Aerial Lifts, Forklifts, Boom & Scissor Lifts, Truck Tractors, Dump Trucks, Service & Pickup Trucks, Attachments and Support.
25. **LIVE:** Wednesday, December 29: **GREENWICH (ALBANY), NEW YORK:** Very Late Model Cat, Ford, New Holland, John Deere, Case Construction & Agricultural Equipment, Aerial Lifts, Forklifts, Utility Equipment, Large Quantity Support, Attachments, Trucks and Trailers.
- 26-34. **LIVE:** Saturday, February 5 to Sunday, February 13: **BUSHNELL (ORLANDO) FLORIDA:** 28th Annual 9-Day Rental Return Auction. The Greatest Construction Equipment, Aerial Lifts, Trucks, Trailers, Attachments, Support Equipment on Planet Earth - The Best of the Best.

## NEW DATES TO BE ANNOUNCED

35. **PARKERSBURG, WEST VIRGINIA:** Complete Retirement Auction. Approximately 100 Antique Collectible Cars and Trucks Plus Truck Tractors and Trailers, that were used to Transport the Collectibles Properly. Small Amount of Late Model Skid Steers, Mini & Midi Excavators.
36. **FAYETTEVILLE, ARKANSAS:** Late Model Construction, Utility, Compact Equipment, Agricultural Tractors & Farm Implements, Large Quantity Landscape Equipment 0° Radius Movement, Utility Vehicles, 4-Wheelers and more.
37. **TORONTO, CANADA:** Late Model Rentals of Agricultural Equipment, Construction Equipment, Attachments, Tools, Support, Various Trucks and Trailers.
38. **BRIDGEPORT, NEW YORK:** Rental Fleet Construction Equipment, Aerial Lifts, Forklifts, Attachments, Support, All Types of Trucks and Trailers.
39. **DALLAS, TEXAS:** Complete Liquidation. Retirement. Late Model Cat, Komatsu, Linkbelt Construction & Utility Equipment, Truck Tractors, Dump Trucks, Service & Water Trucks, Equipment & Dump Trailers, Support.
40. **RACINE, WISCONSIN:** Job Completion Auction of Late Model Construction, Aggregate, Utility Equipment, Truck Tractors, Dump Trucks, Service & Pickup Trucks, Trailers, Attachments and Support
41. **HARTFORD, CONNECTICUT:** Retirement Auction. Complete Liquidation. Over 51 Years in Business. Construction Equipment, Aggregate, Aerial Lifts, Forklifts, Demolition Equipment, Truck Tractors, Dump Trucks, Service, Utility and Pickup Trucks, Attachments, Support, Shop Equipment.

## MAIN OFFICE

**315.633.2944 • 315.633.2872 • 315.633.9544 • EVENINGS: 315.637.8912, FAX: 315.633.8010**

## BRANCH OFFICES

**ATLANTA, GA**  
**BRATTLEBORO, VT**  
**CHICAGO, IL**  
**COLUMBUS, OH**  
**DALLAS, TX**  
**DENVER, CO**  
**DES MOINES, IA**  
**FORT WORTH, TX**  
**HARRISBURG, PA**

**770.537.7386**  
**802.490.7894**  
**312.724.5474**  
**614.254.5596**  
**972.725.7761**  
**720.277.0263**  
**515.414.2868**  
**817.807.2761**  
**717.836.0919**

**HOUSTON, TX**  
**LAS VEGAS, NV**  
**MOBILE, AL**  
**NASHVILLE, TN**  
**NEW LONDON, CT**  
**OKLAHOMA CITY, OK**  
**PARKERSBURG, WV**  
**RACINE, WI**  
**ST. LOUIS, MO**

**832.450.3910**  
**702.475.4992**  
**251.510.1538**  
**615.922.5197**  
**860.924.7735**  
**405.438.3188**  
**304.699.3050**  
**262.886.2778**  
**314.570.4127**

**TAMPA, FL**  
**WASHINGTON, DC**  
**MONTREAL, CA**  
**OTTAWA, ON**

**813.777.3273**  
**202.888.6003**  
**514.949.7500**  
**514.916.4656**

**LYONAUCTION.COM**  
**LYONAUCTIONLIVE.COM**