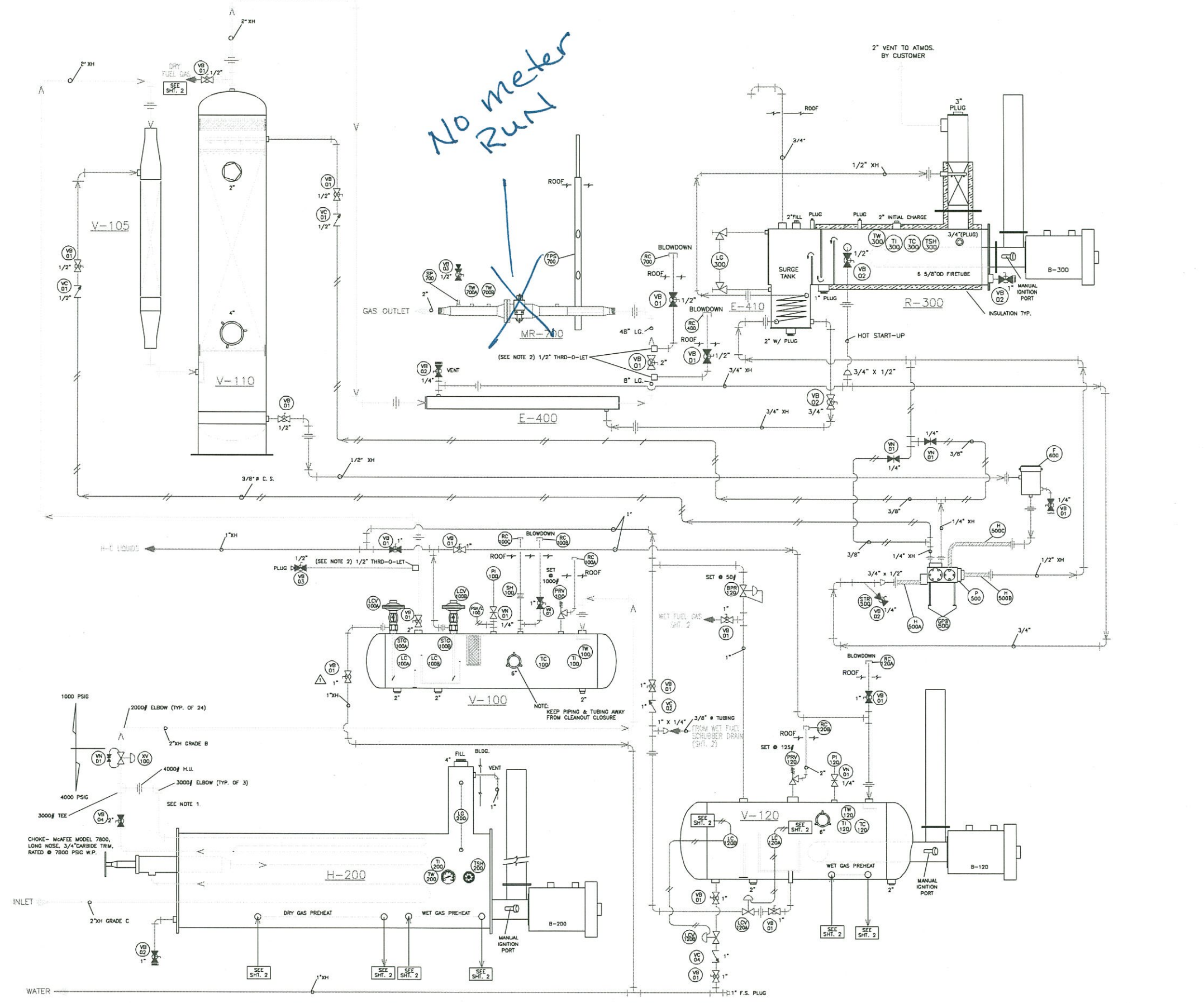


V-105 PREHEATER 4" SCH. 80
 V-110 GAS ABSORBER 16" O.D. X 6'-0" S/S 1100 PSIG M.A.W.P. @ -20F TO 500F ASME CODE SECTION VIII, DIV. 1
 V-100 GAS/SOLVENT SEPARATOR 2" XH INSIDE, 3 1/2" O.D. SHELL
 MR-700 METER RUN 3" SCH. 40, C/W ANSI 800F DANIELS FLE X WELD ORFICE FITTING STRAIGHTENING VANE & (3) 3/4" 3000F CPLG. 54" UPSTREAM X 30" DOWNSTREAM, RIGHT TO LEFT FLOW
 E-410 LEAN/RICH EXCHANGER 1/2" XH PIPE SPIRAL
 R-300 RICH FUEL REHEATER 18" O.D. X 5'-0" E/E 85 MBTU/HR
 STEEL COLUMN 6 5/8" O.D. X 4'-0"
 STAGE 6 5/8" O.D. X 10'-0"
 B-300 BURNER 14" DIA. FLAME ARRESTOR/BURNER 1" ECLIPSE GAS / AIR MIXER 1/2" WENCO #1000-B SOFT PILOT & TIP

No meter Run



NOTES
 1. 2" NIPPLES SHOWN MADE FROM GRADE C PIPE (NO FACTORY NIPPLES OR FLOW COIL ON-PASS)
 2. WELD JOBS (2) 2" XH NIPPLES 6" LONG (W/THREAD-O-LETS) (1) 2" XH 48" LONG (W/THREAD-O-LETS) REF. Dwg # W-273

REFERENCED DRAWINGS	
FLOW PIPE STAND (Dwg # W-270 (EFS-770))	PIPING (Dwg # W-273)
CHOKER LWS (W-575 (SIS-100A, SIS-100-B))	DIYCOL. PUMP (Dwg # W-526 (P-500))
DIYCOL. PUMP BRACKETS (W-977 (OPG-500))	

LEGEND	
	F.S. TEE
	F.S. 90° ELBOW
	E.C. TUBING W/ SHROUD C.S. FITTINGS
	V-01 BALL VALVE, C.S. 2000# (W/HAZARD OR EQUAL)
	V-02 CHECK VALVE, C.S. 1500# (W/HAZARD OR EQUAL)
	V-03 NEEDLE VALVE, C.S. 5000# (K.F. OR EQUAL)
	HIGH PRESSURE FLEX HOSE 1/2" W/MP CONN.
	F.S. UNION
	BALL VALVE (CLOSED)
	V-04 BALL VALVE, BRASS OR BRONZE
	V-05 BALL VALVE, STAINLESS STEEL
	V-06 CHECK VALVE, BRONZE
	V-07 CHECK VALVE, BRONZE 1000# EMP
	V-08 CHECK VALVE, ANNEaled PISTON

REVISION				
REV. 0	DATE 12-19-01	BY TB	FOR CONSTRUCTION	DESCRIPTION

J.W. WILLIAMS INC.
 OIL AND GAS PROCESSING EQUIPMENT
 P.O. BOX 2106
 CASPER, WYOMING 82602
 AEC OIL & GAS (USA) INC.
 SUBLETTE CO., WYOMING
 4.0 MMSCFD COMBINATION PRODUCTION/DEHYDRATION UNIT
 PIPING & INSTRUMENTATION DIAGRAM

REV.	DATE	BY	SCALE	SHEET	OF	NO.	REV.
0	15	DEC 01	7100	DWG	1	OF 4	
1	15	DEC 01	7100	DWG	1	OF 4	

2" XH 12 PASSES, SPLIT 6 & 6 PREHEAT, GR. C RATED @ 4000 PSIG EXPANSION: GR. C RATED @ 4000 PSIG
 30" O.D. X 13' E/E 10 3/4" O.D. U-TUBE RATED @ 750 MBTU/HR
 24" DIA. FLAME ARRESTOR/BURNER 2 1/2" ECLIPSE GAS/AIR MIXER 1/2" WENCO #1000-B SOFT PILOT & TIP
 20" O.D. X 3'-0" S/S 1000 PSIG M.A.W.P. ASME CODE SEC. VIII, DIV. 1 HORIZONTAL, 3-PHASE
 30" O.D. X 5'-0" S/S 125 PSIG M.A.W.P. ASME CODE SEC. VIII, DIV. 1 HORIZONTAL, 3-PHASE
 14" DIA. FLAME ARRESTOR/BURNER 1" ECLIPSE GAS/AIR MIXER 1/2" WENCO #1000-B SOFT PILOT & TIP
 6000F FLYCOL. PUMP KIRBY MODEL 4015-FW W/ SPLIT DISCHARGE
 6000F FLYCOL. FILTER KIRBY ELEMENT # 2953