

★ INDEPENDENT ★
Certified Diamond Appraising
 by Lynn G. Van Wagenen & Associates, LLC

ROYAL WOOD OFFICE PLAZA
 230 West 200 South Suite 2610
 Salt Lake City, Utah 84101 Phone 801-876-2150

- Gemological Institute of America
- ◆ Diamond Essentials Certificate
 - ◆ Diamond Grading Certificate
 - ◆ Graduate Diamonds Diploma



Diamond Report



Grading & Appraisal

REPORT NUMBER: 0011359

DATE: December 20, 2016

GRADING SUMMARY (Center Stone)

- ◆ Shape / Cut: Marquise Brilliant
- ◆ Carat Weight: 1.02 cts.
- ◆ Clarity Grade: SI2
- ◆ Color Grade: F
- ◆ Fluorescence: Strong Blue

Clarity Grading Scale

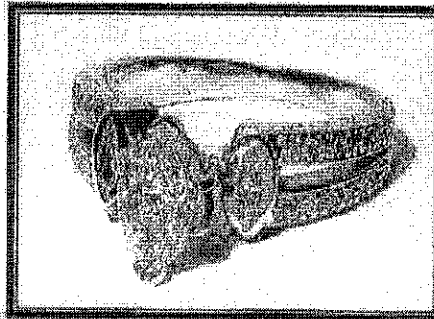
F	IF	VVS ₁	VVS ₂	VS ₁	VS ₂	SI ₁	SI ₂	S _L ₁	S _L ₂	I ₁	I ₂	I ₃
Flawless Internally Flawless		Very Very Slightly Included		Very Slightly Included		Slightly Included		Included				

Color Grading Scale

D	E	F	G	H	I	J	K	L	M	N	O	P	Q	R	S	T	U	V	W	X	Y	Z
Colorless			Near Colorless			Faint Yellow			Very Light Yellow			Light Yellow										

DESCRIPTION OF ARTICLE(S)

The above fancy-cut, center stone diamond is six-prong crown set in a Ladies custom 14K white gold ring size 6. Adjacent to the center stone in are two (2) marquise brilliant accent diamonds. The ring is further accented with twenty eight (28) round brilliant melee diamonds set down on the shank – 14 on each side of the center stone. The combined carat weight of all accent stones is 0.38 cts (TW); they are SI in clarity and F-G-H in color. The total weight of the ring including the diamonds is 5.7 grams.



DIGITAL PHOTO (Enlarged for Detail)

NOTE/COMMENTS

The carat weight of the diamonds was stated by the supplier and confirmed by formula.

Report Prepared for...

➤ Brian Hermann

Estimated Retail
 Replacement Price:

\$9,170.00

By:

Lynn G. Van Wagenen
 Lynn G. Van Wagenen
 GIA Diamonds Graduate

