



United States  
Department of  
Agriculture

## Rock Island County, Illinois

W=Wheat,SRW,GR

SB,S,B=Soybeans,Com,GR

Alf=Alfalfa,FG

Pasture,Past=MixFG,LGM,GZ \*Non-Irrigated unless noted on map

C=Corn,Yel,GR

Hay=MixFG,LGM,FG

WW=Grass,Br,LS

2023 PRODUCER SHARES:

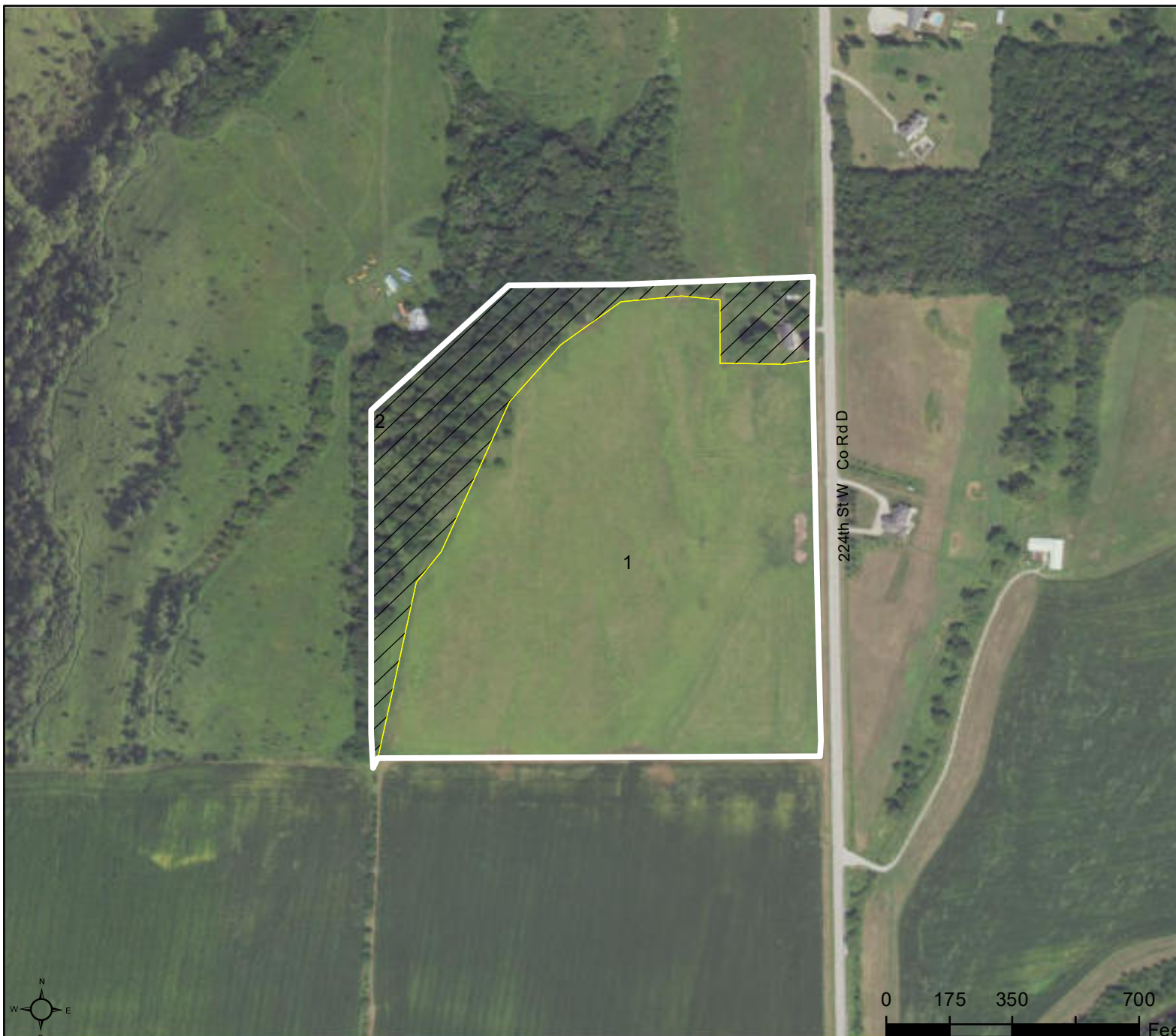
# Farm 2445

## Tract 405

### 2023 Program Year

CLU	Acres	HEL	Crop
1	27.68	HEL	
2	8.1	UHEL	NC

Page Cropland Total: 27.68 acres



Map Created April 05, 2023

#### Common Land Unit

- Cropland
- Non-Cropland
- Tract Boundary

#### Wetland Determination Identifiers

- Restricted Use
- Limited Restrictions
- Exempt from Conservation Compliance Provisions

USDA FSA maps are for FSA Program administration only. This map does not represent a legal survey or reflect actual ownership; rather it depicts the information provided directly from the producer and/or the NAIP imagery. The producer accepts the data 'as is' and assumes all risks associated with its use. The USDA Farm Service Agency assumes no responsibility for actual or consequential damage incurred as a result of any user's reliance on this data outside FSA Programs. Wetland identifiers do not represent the size, shape, or specific determination of the area. Refer to your original determination (CPA-026 and attached maps) for exact boundaries and determinations or contact NRCS.