

Undercounter Refrigerators

Model Numbers: UR1R-1, UR2R-1, UR2R6-1

Supera® Refrigeration

It's frustrating to pay more for features that should be standard. Supera® gets that and offers standard features like door locks, factory-installed casters and a 90° stay-open door for every refrigeration unit. See how Supera's simple solutions can enhance the cold storage options in your restaurant!

FEATURES

Stainless Steel Exterior

Each Supera® Undercounter Refrigerator is outfitted with stainless steel sides, front and top panels for a sharp look. The doors are accented with recessed handles that are also ergonomic, making for a great grip and easy opening. Besides looking great, the stainless steel exterior is exceptionally durable and corrosion resistant.

Easy-Access Compressor Unit

The compressor unit is easily accessible for fast preventative maintenance and cleaning. With aluminum/copper coated coils, environmentally friendly R-134A refrigerant and a capillary tube system, you can keep this refrigerator in a temperature range of 33°F to 39°F with ease.

Hassle-Free Doors

The stainless steel doors are made for easy accessibility to all of your stored products. All doors will stay open when opened past 90° and are self-closing when opened less than 90° to help cooks access their ingredients.



UR1R-1



UR2R-1



UR2R6-1



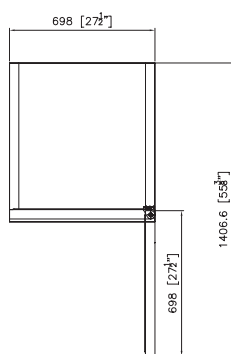
Features at a Glance:

- Temperature range from 33°F to 39°F
- Stainless steel exterior is attractive and durable
- Stainless steel interior cleans easily
- Recessed handles with ergonomic grip
- Includes factory-installed heavy-duty shelves
- Self-closing doors remain open past 90°
- Utilizes environmentally friendly R-134A refrigerant
- Energy-efficient polyurethane insulation
- Easy-access compressor
- Removable door gaskets for easy maintenance
- Two front casters (4"D) are equipped with brakes

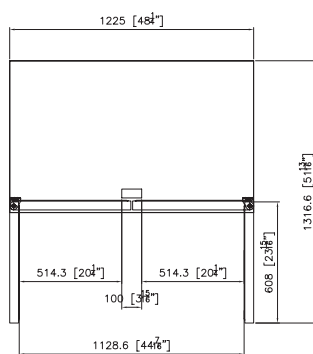
Undercounter Refrigerators – Product Specifications

Model Numbers: UR1R-1, UR2R-1, UR2R6-1

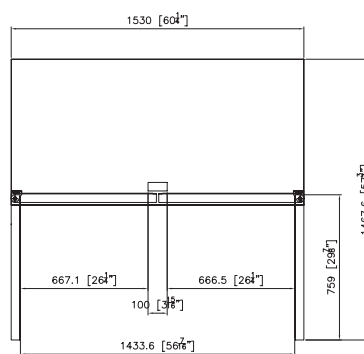
Plan View



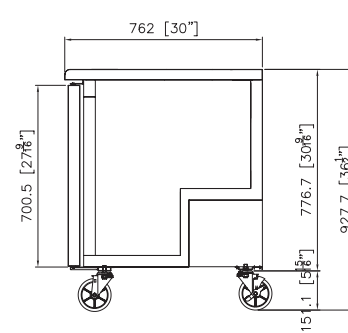
TOP VIEW
UR1R-1



TOP VIEW
UR2R-1



TOP VIEW
UR2R6-1



SIDE VIEW
All Models



PRODUCT SPECIFICATIONS

Model	UR1R-1	UR2R-1	UR2R6-1
Dimensions	27.5"W x 30"D x 36.6"H	48.2"W x 30"D x 36.6"H	60.2"W x 30"D x 36.6"H
Shipping Dimensions	33"W x 30"D x 37"H	51"W x 34"D x 37"H	63"W x 33"D x 37"H
Capacity	6.5 Cu. Ft.	12 Cu. Ft.	17.9 Cu. Ft.
Inner Temperature	33°F ~ 39°F / 1°C ~ 4°C		
Doors	1	2	2
# of Shelves	1	2	2
Refrigerant	R-134A		
Compressor HP	1/4	1/3	1/3
Cooling Type	Ventilated		
Insulation Type	Polyurethane		
Temperature Control Type	Thermostat		
Amps(A) 115v/60Hz	3.2	4.2	4.2
Watts	200	290	490
Net Weight	199 lbs	243 lbs	298 lbs