

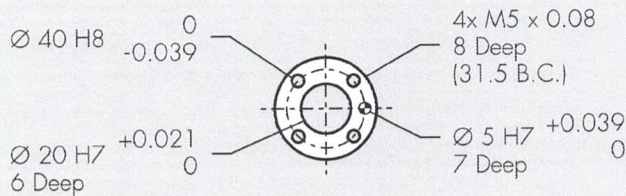
# Adept Viper™ s650

## Dimensions Adept Viper s650 (mm)

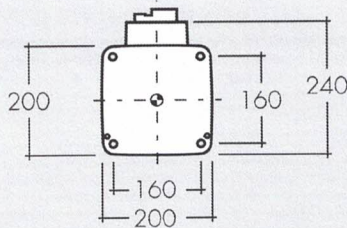


- Work Envelope: Radius 650 mm
- Inner Limit: Radius 159 mm

## Dimensions Flange (mm)



## Dimensions foot plate (mm)



## Dimensions MotionBlox-60R (mm)



## The Adept Viper s650 system includes the following:

- Adept Viper 650 Robot
- Adept SmartController CX (with software installed)
- MotionBlox-60R servo controller
- Front Panel with E-Stop
- 4 Meter Robot Cable
- AdeptWindows Software
- Network File Server (NFS) software
- Ethernet TCP/IP capability
- User Documentation



Adept Technology, Inc. 3011 Triad Drive, Livermore, CA 94551  
 Tel: 925-245-3400 Fax: 925-960-0452 Email: info@adept.com  
[www.adept.com](http://www.adept.com)

Specifications subject to change without notice.

©2007 Adept Technology, Inc. All rights reserved. Adept and the Adept logo are registered trademarks, and the Adept Viper is a trademark of Adept Technology, Inc. All other trademarks are the property of their respective holders. AV650DS0707